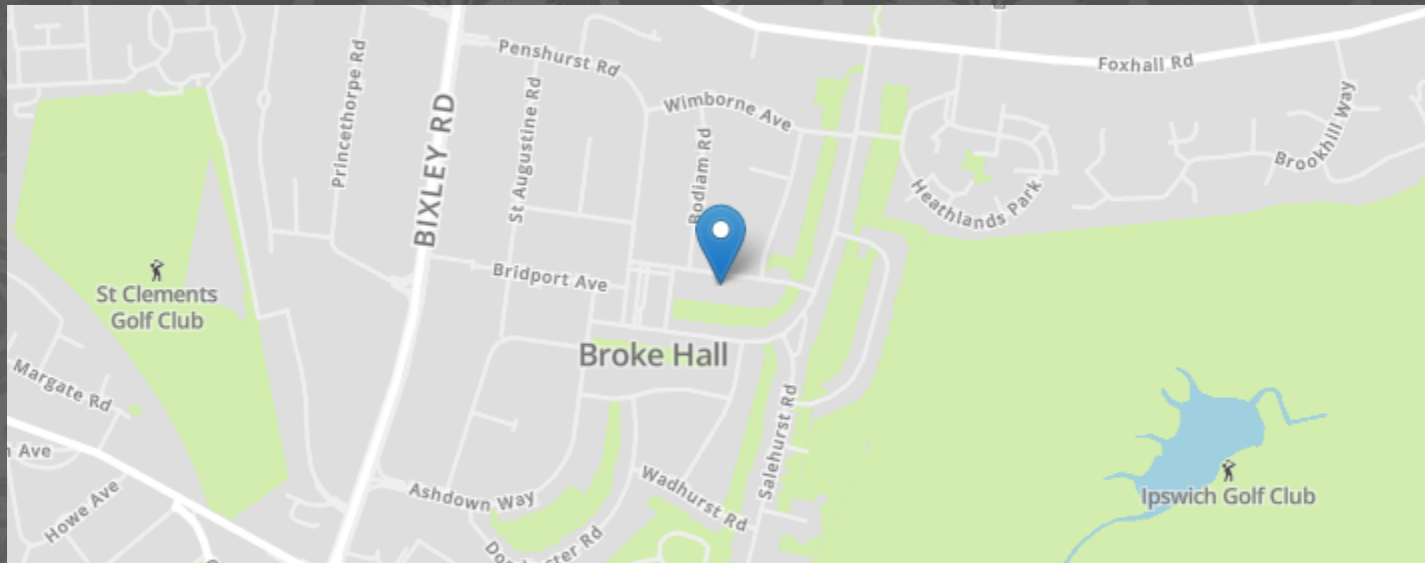


Wareham Avenue, Ipswich



- FOUR BEDROOM SEMI DETACHED HOUSE WITH NO ONWARD CHAIN
- POPULAR BROKE HALL DEVELOPMENT IN EAST IPSWICH
- KITCHEN/BREAKFAST ROOM
- LOUNGE 4.76M X 3.43M
- FRONT & LANDSCAPE REAR GARDEN 20M X 10M

- RARELY AVAILABLE IN VALUER'S OPINION
- IN NEED OF A DEGREE OF UPDATING (VALUER'S OPINION)
- CLOAKROOM & FIRST FLOOR BATHROOM
- DINING ROOM 2.82M X 2.79M
- GARAGE & DRIVEWAY PROVIDING OFF ROAD PARKING

MARKS & MANN

7 The Square, Martlesham Heath, Ipswich, Suffolk, IP5 3SL.

01473 396 007

contactipswich@marksandmann.co.uk

Website www.marksandmann.co.uk

MARKS & MANN



Wareham Avenue, Ipswich

Marks & Mann are delighted to offer for sale with NO ONWARD CHAIN THIS RARELY AVAILABLE FOUR BEDROOM SEMI DETACHED FAMILY HOME located on the popular Broke Hall development in east Ipswich. The property is in need of a degree of updating and benefits from ground floor cloakroom, first floor family bathroom, kitchen/breakfast room, two reception rooms, landscaped rear garden, front garden, garage and driveway providing off road parking.

Early viewing is highly recommended. Internal photos coming soon.

£375,000 Offers in Excess of

Wareham Avenue, Ipswich

Front Garden

Laid to lawn with plant/shrub borders. Hard standing providing off road parking leading to the garage.

Entrance Porch

Double glazed door to front. Storage cupboard.

Hallway

Coved ceiling. Stairs leading to first floor. Radiator.

Cloakroom

Double glazed window to side. Low-level WC. Wash hand basin.

Lounge

15' 7" x 11' 3" (4.76m x 3.43m)
Double glazed window to front. Coved ceiling. Radiator. Gas fire. French doors to:

Dining Room

9' 3" x 9' 2" (2.82m x 2.79m)
Double glazed window to rear. Radiator. French doors to lounge.

Kitchen/Breakfast Room

16' 2" x 9' 2" (4.93m x 2.80m)
Double glazed window to rear. Double glazed door to side. Floor standing boiler. Range of eye level units and range of base units with cupboards and drawers. Space for washing machine. Single drainer sink unit. Fitted oven and electric hob. Radiator.

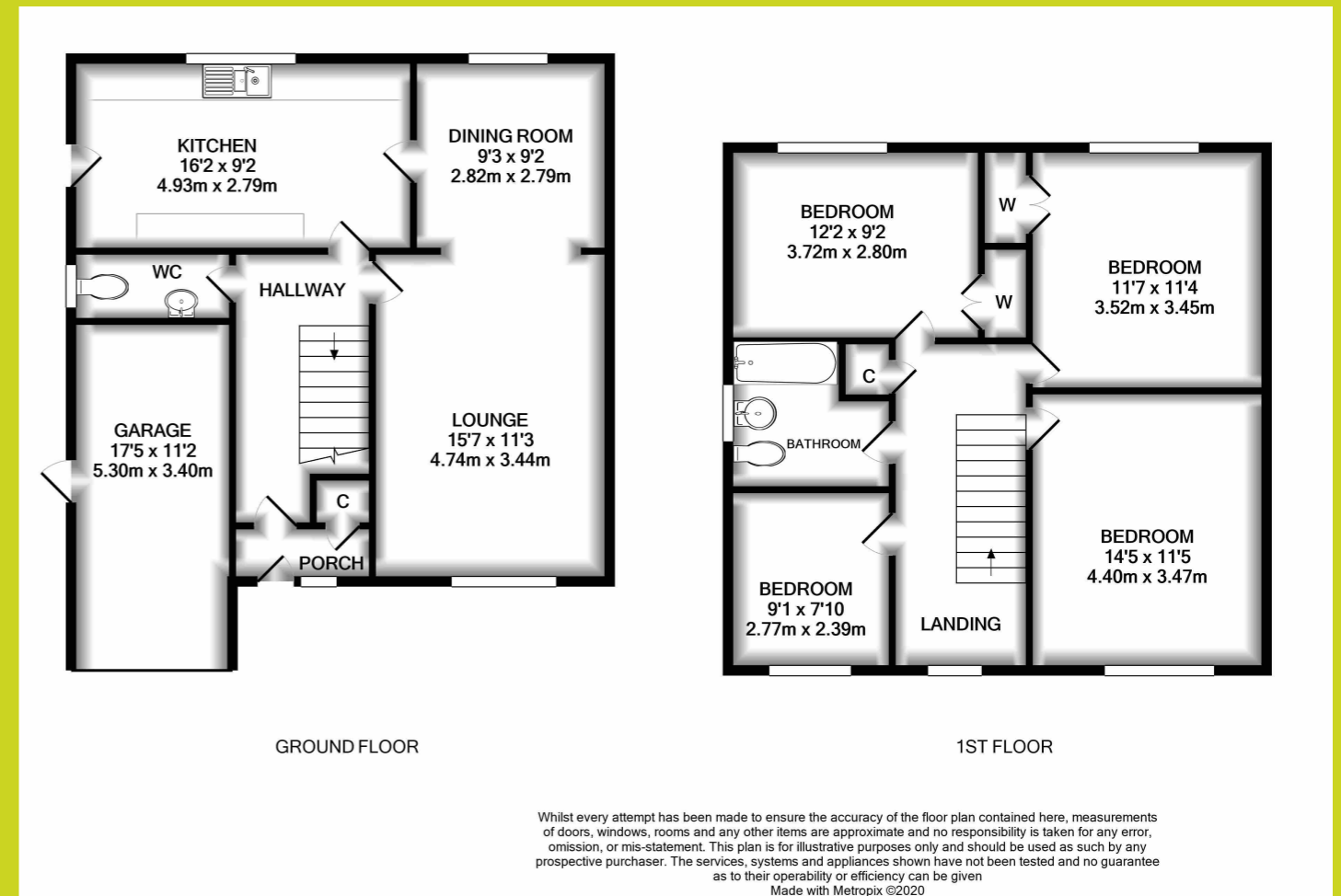
Landing

Double glazed window to front. Storage cupboard.

Bedroom One

13' 11" x 11' 3" (4.24m x 3.44m)
Double glazed window to front. Radiator. Coved ceiling.

Wareham Avenue, Ipswich



The above floor plans are not to scale and are shown for indication purposes only.