



Guide Price £800,000 Freehold
4 bedroom end of terrace house

Abbotshall Road
Catford

Read all about it...

****GUIDE PRICE: £800,000-£825,000****

A beautiful example of a spacious Corbett house, this home is perfect for a growing family looking for extra space. Offering almost 1600sqft of internal space, the property consists of a bright and airy lounge that allows in an abundance of natural light from the large bay windows, a modern fitted kitchen, utility room and separate W/C, along with the dining room to the back of the property.

Upstairs, on the first floor are two spacious double bedrooms and a three-piece family bathroom along with an additional room. The second floor consists of a generous double bedroom with an ensuite bathroom in the converted loft.

Situated on a quiet residential road in the heart of the Corbett Estate the house has the added benefit of a private driveway and offers easy access to the Abbotshall playing fields and Abbotshall Healthy Lifestyle Centre, a community hub great for both kids and adults.

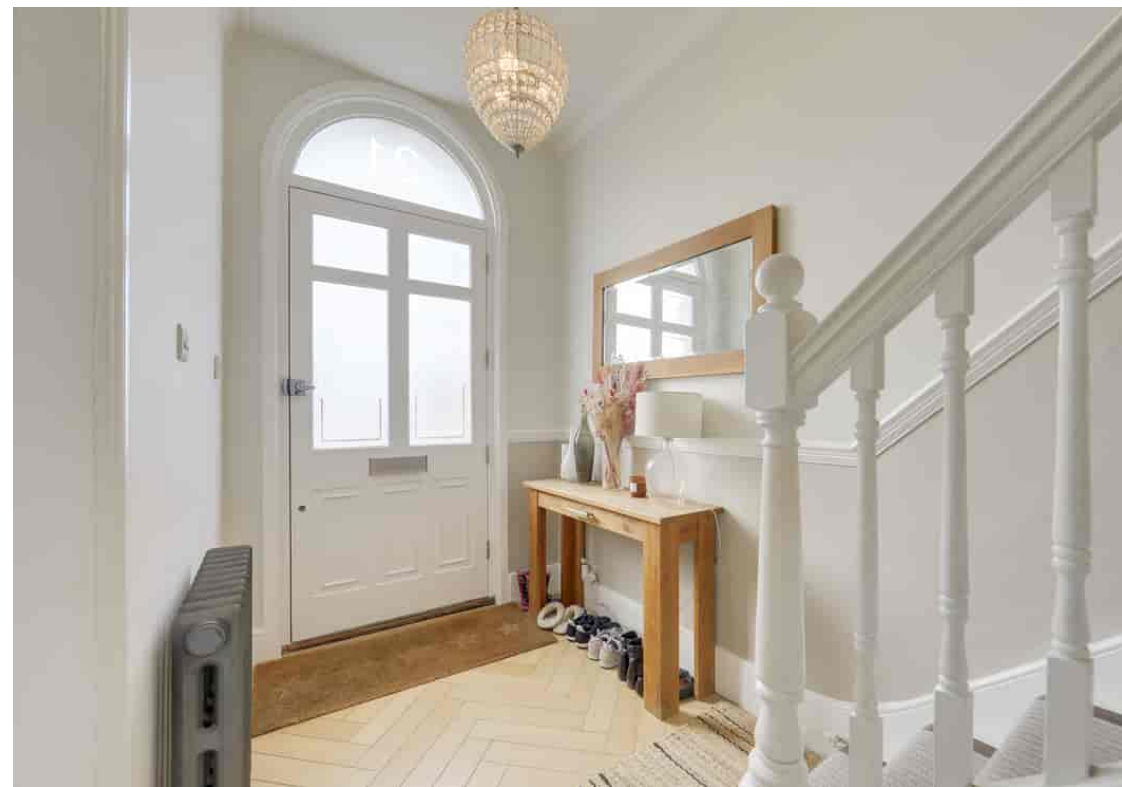
The Corbett Estate is a family-dominated area with a strong community feel to it, falling within the catchment of sought-after primary schools. Commuter links are also available to a choice of London Stations, whether you need access to the City with trains to London Bridge, Blackfriars, and Cannon Street from Hither Green, Bellingham or the twin Catford Stations.

A truly beautiful period home ready for a family to move straight into.

Tenure: Freehold

**CORBETT ESTATE
FOUR BED - TWO BATH
0.6MI TO MOUNTSFIELD PARK**

**END OF TERRACE HOUSE
TOTAL AREA: 1,583SQFT.
1.0MI TO TWIN CATFORD
STATIONS**



Like what you see?

Call **020 8690 3656** or email us at catford@stanfordstates.london to arrange a viewing or request further information



GROUND FLOOR

Entrance Hall

Pendant light, radiator, wood flooring

Lounge

15' 1" x 14' 5" (4.60m x 4.39m)

Pendant light, front-facing double glazed bay windows, shutters, radiator, alcove shelving, fitted carpet

W/C

Utility Room

Kitchen

14' 5" x 12' 6" (4.39m x 3.81m)

Pendant lights, spotlights, radiator, matching wall and base units, ceramic sink with drainer and single mixer tap, tile splashback, integrated oven and electric hob, wood flooring

Dining Room

14' 5" x 10' 6" (4.39m x 3.20m)

Pendant lights, skylights, radiators, wood flooring

FIRST FLOOR

Landing

Pendant lights, fitted carpet

Bathroom

9' 6" x 6' 3" (2.90m x 1.91m)

Ceiling light, rear-facing double glazed window, wash basin with vanity unit, panel enclosed, bathtub, walk-in shower, W/C, tile flooring

Bedroom

12' 11" x 12' 7" (3.94m x 3.84m)

Pendant light, rear facing double glazed window, radiator, fitted carpet

Bedroom

15' 0" x 11' 4" (4.57m x 3.45m)

Pendant light, front facing double glazed bay window, shutters, radiator, fitted carpet

Bedroom

9' 6" x 8' 6" (2.90m x 2.59m)

Pendant light, front facing double glazed window, shutters, radiator, fitted carpet

SECOND FLOOR

Bedroom

19' 10" x 16' 9" (6.05m x 5.11m)

Spotlights, skylights, radiator, fitted carpet

Ensuite

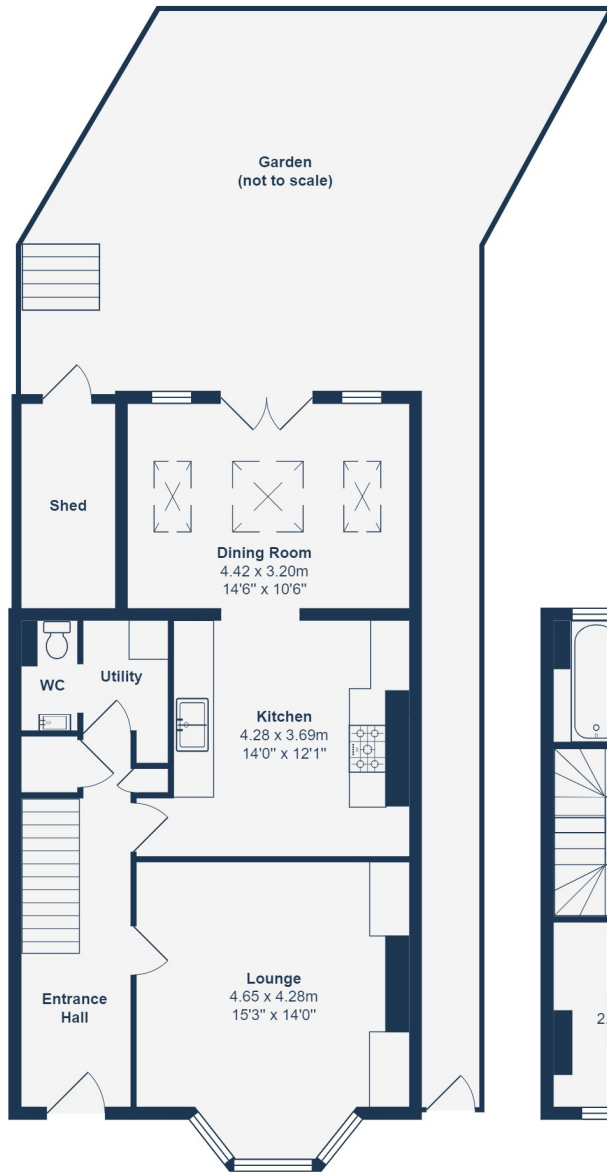
6' 7" x 6' 3" (2.01m x 1.91m)

Spotlights, rear facing double glazed window, wash basin with vanity unit, walk-in shower, W/C, tile flooring

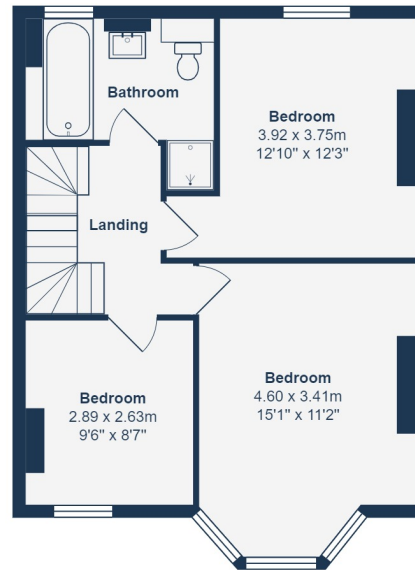
OUTSIDE

Garden

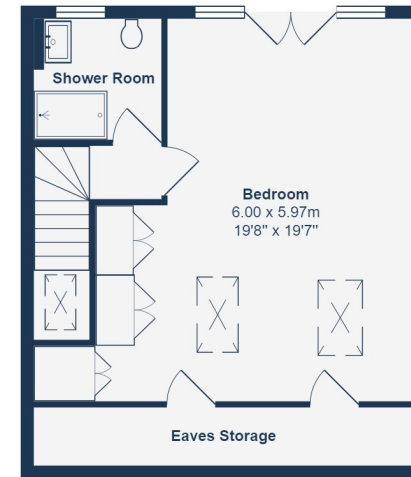
Paved area, laid lawn, mature trees and shrubbery



Ground Floor



First Floor



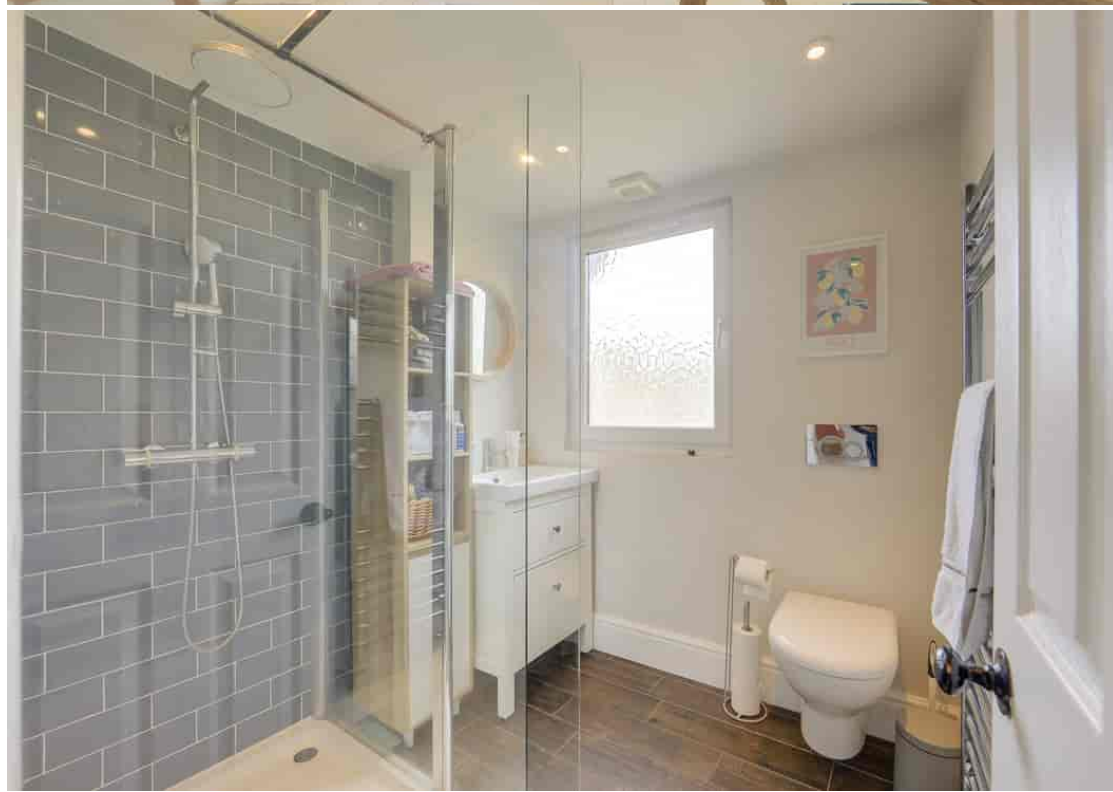
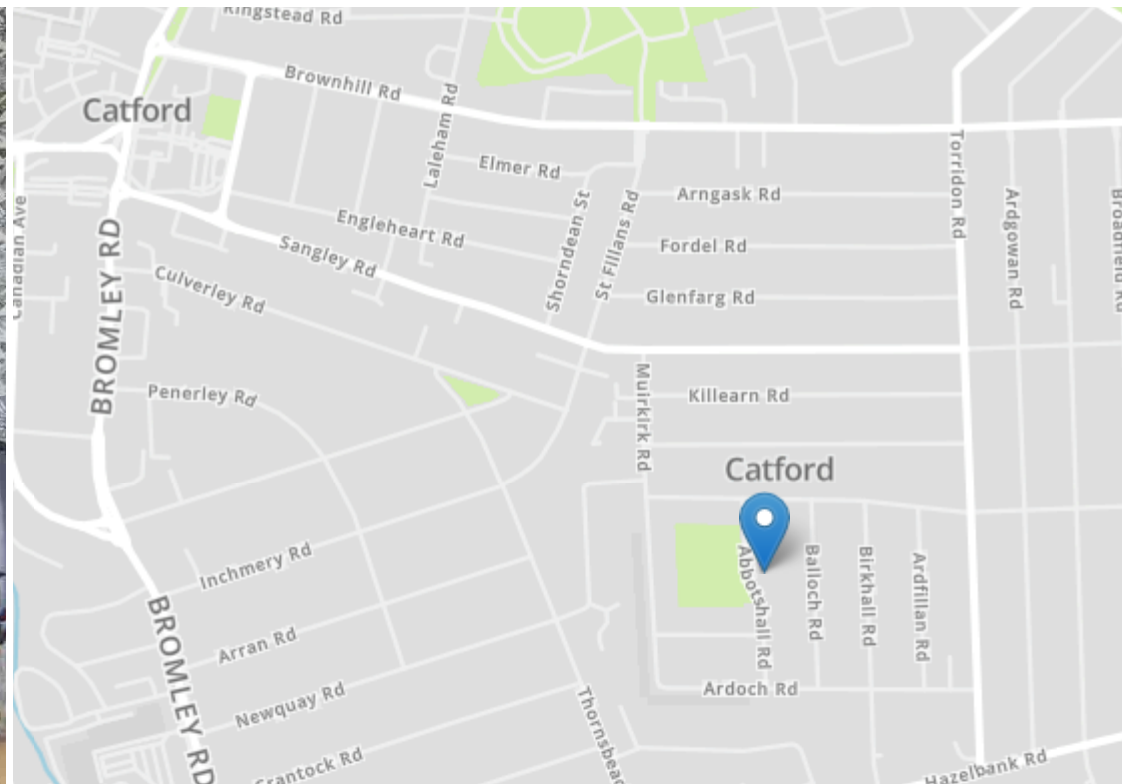
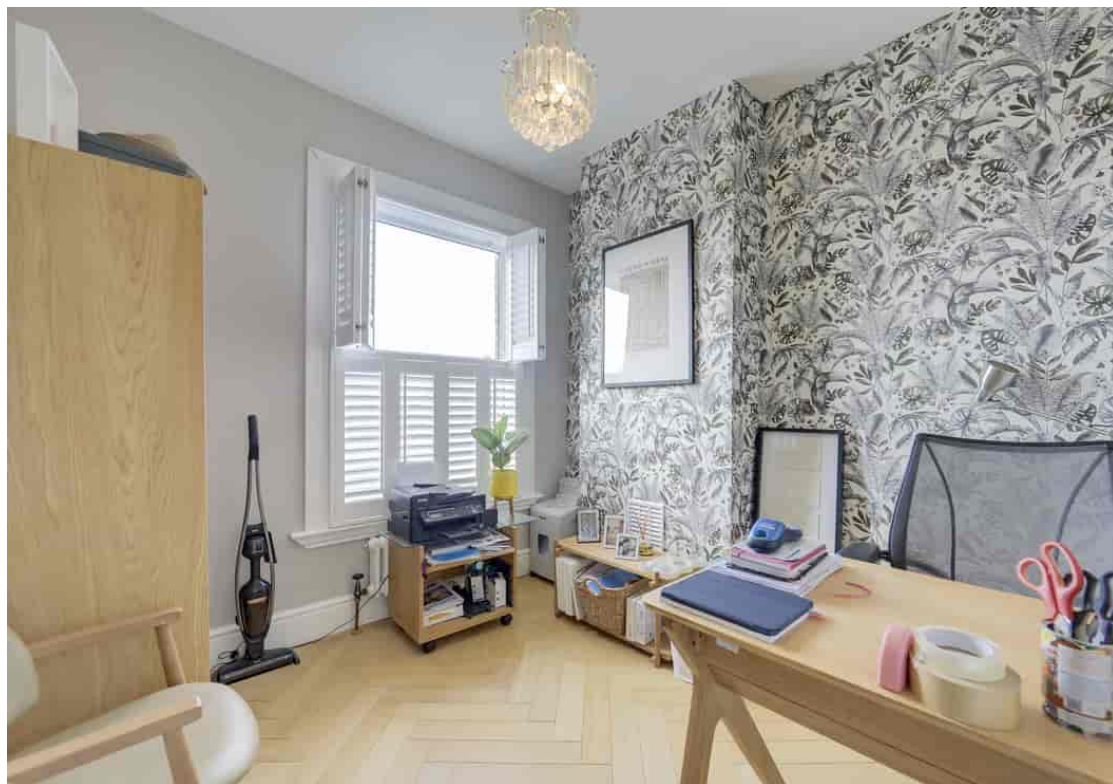
Second Floor

Total Area: 147.1 m² ... 1583 ft² (excluding shed, eaves storage, garden)

Drawn for Stanfords Sales & Lettings
This floorplan is for illustrative purposes only. Whilst every effort has been made to ensure the accuracy of the plan, the dimensions and total area are approximated only and should not be relied upon.







Energy Efficiency Rating		Current	Potential
Very energy efficient - lower running costs			
(92+)	A		
(81-91)	B		86
(69-80)	C		
(55-68)	D	64	
(39-54)	E		
(21-38)	F		
(1-20)	G		
Not energy efficient - higher running costs			
England, Scotland & Wales		EU Directive 2002/91/EC	



Robert Stanford Estates property particulars are produced in accordance with the Consumer Rights Act (2015) and should not be construed as a contract or offer. The contents of these property particulars are to provide a general illustration only and are inconsequential to any decisions to purchase a property. A potential buyer accepts that all representations made by these particulars are made in good faith on behalf of the seller and require verification by a buyers' legal and professional representatives prior to an exchange of contracts. We offer no guarantees for any structural component, service or appliance and while we make every effort to take accurate measurements and distances, they are illustrative only. Any reliance you place on information within these particulars is therefore strictly at your own risk.