



## 8 Mossmans Close, Bletchley, Milton Keynes, Buckinghamshire, MK2 3BU

### £225,000 Share of Freehold

- TWO DOUBLE BEDROOM AND TWO BATHROOMS
- OWN FRONT DOOR NO COMMUNAL ENTRANCE
- BRILLIANT CONDITION
- CAN RENT FOR £1,200
- ALLOCATED PARKING
- WALKING DISTANCE TO THE TRAIN STATION
- SEPERATE KITCHEN
- EPC Rating





Located on a modern development on the Eaton Mill estate is a two double bedroom first floor maisonette, the property boasts from having allocated parking, en-suite to the master bedroom, lounge/diner. The property has been updated by the owner and is in great condition.

Further benefits include being in GOOD DECORATIVE order throughout, having a HIGH LEASE length and is also within walking distance to the Bletchley TRAIN STATION with links to LONDON EUSTON.

Service charge is £50 a month

108 years left on lease

### Bedroom one

4.89m x 2.76m (16' 1" x 9' 1")

### Bedroom Two

3.47m x 2.76m (11' 5" x 9' 1")

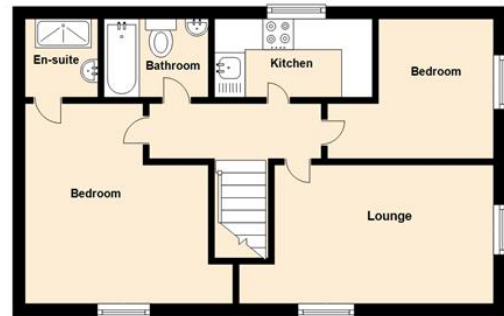
### Kitchen

3.78m x 1.84m (12' 5" x 6' 0")

### Disclaimer

Whilst we have endeavoured to prepare our sales particulars accurately none of the services, appliances or equipment have been tested. A buyer should satisfy themselves on such matters prior to purchase. Any measurements or distances mentioned in these particulars are for guide reference only. If such particulars are fundamental to a purchase, buyers should rely on their own enquiries. All enquiries should be directed to Elevation Estate Agents in the first instance.

Ground Floor



Floor plans are for layout purposes only. Measurements are approximate and subject to inaccuracies  
Plan produced using PlanUp.