



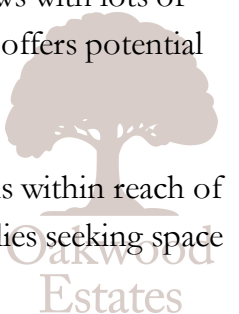
Occupying a generous plot on the corner of a popular residential road in Colnbrook, perfect for those commuting to Heathrow airport, this semi-detached property has been tastefully extended to create a substantial family home boasting five bedrooms.

The property benefits from two reception rooms, perfect for both living and dining. A rear extension enhances the living space, creating a large, well-appointed kitchen with doors opening to the upper patio, offering a practical and stylish space for cooking and dining. The ground floor also benefits a fifth double bedroom with en-suite bathroom, that also provides a separate shower cubicle.

Upstairs, the home comprises four double bedrooms, providing ample accommodation for a large family along with common wet room.

The rear garden is an exceptionally large outdoor space enjoying fantastic south-facing views with lots of natural light. The garden is mostly laid to a well-manicured lawn with a summer house that offers potential uses as a home office or gym.

Located in a residential area, this home is offered to the market with no onward chain, and is within reach of local schools, transport links, and amenities within a mile, making it an ideal choice for families seeking space and convenience.



Property Information

- **GENEROUS PLOT**
- **TWO RECEPTION ROOMS PLUS KITCHEN
EXTENSION TO THE REAR**
- **FOUR GOOD SIZE BEDROOMS ON THE
FIRST FLOOR**
- **DRIVEWAY PARKING**
- **NO CHAIN**
- **FIVE BEDROOM SEMI-DETACHED
PROPERTY**
- **GROUND FLOOR BEDROOM WITH EN-
SUITE**
- **BEAUTIFUL SOUTH-FACING REAR
GARDEN**
- **EASY ACCESS TO HEATHROW AIRPORT**

**x5**
Bedrooms

**x2**
Reception Rooms

**x2**
Bathrooms

**x1**
Parking Spaces

**Y**
Garden

**N**
Garage

Transport Links

NEAREST STATIONS:

- Heathrow Terminal 5 - 1.2 miles
- Iver - 2 miles
- Wraysbury - 2 miles

Local Schools

PRIMARY SCHOOLS:

- Pippins School

150 yards
- Colnbrook Church of England Primary School

0.6 miles
- Harmondsworth Primary School

1.4 miles
- Foxborough Primary School

1.6 miles
- The Langley Heritage Primary

1.9 miles

- Holy Family Catholic Primary School
- 1.9 miles

SECONDARY SCHOOLS:

- Langley Grammar School

2.2 miles
- The Langley Academy

2.4 miles
- Langley Hall Arts Academy

2.5 miles
- Ditton Park Academy

2.9 miles
- Churchmead Church of England (VA) School

3 miles
- St Bernard's Catholic Grammar School

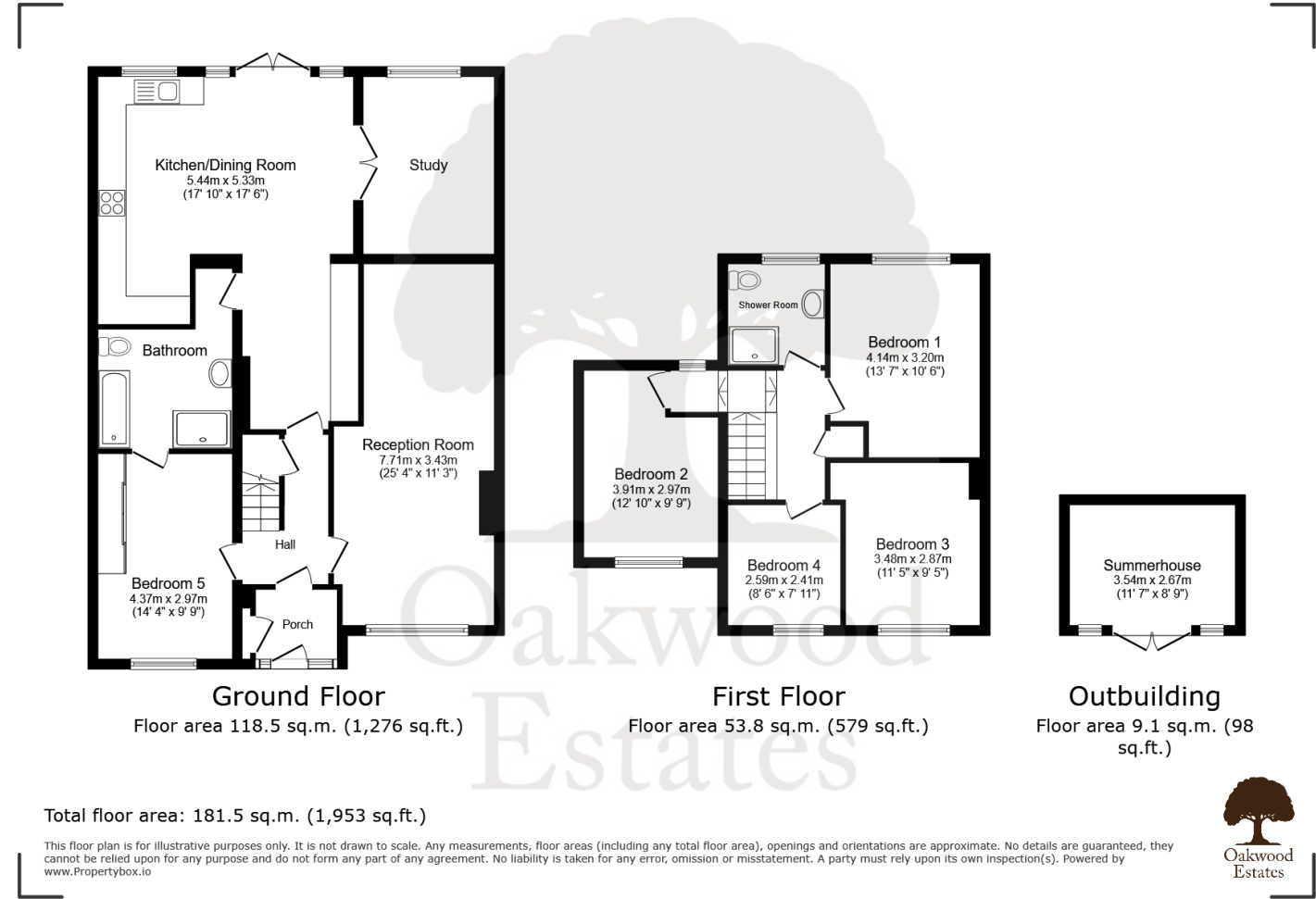
3.2 miles
- Thomas Knyvett College

3.3 miles
- Upton Court Grammar School

3.3 miles
- Council Tax

Band D

Floor Plan



Prospective purchasers should be aware that these sales particulars are intended as a general guide only and room sizes should not be relied upon for carpets or furnishing. We have not carried out any form of survey nor have we tested any appliance or services, mechanical or electrical. All maps are supplied by Goview.co.uk from Ordnance Survey mapping. Care has been taken in the preparation of these sales particulars, which are thought to be materially correct, although their accuracy is not guaranteed and they do not form part of any contract.

