



**Goodwyn Avenue, Mill Hill, NW7**

**£500,000**



## Goodwyn Avenue, Mill Hill, NW7

Located in the very heart of Mill Hill is this immaculately presented two double bedroom, two bathroom (+ separate WC) split level apartment offering circa 900 Sq Ft (83 Sq M) of internal space.

This generously proportioned flat would make an ideal first time purchase and further benefits from an impressive open plan kitchen/reception area, a spacious master bedroom offering ample wardrobe space and en-suite and a second bedroom with en-suite attached.

We have been advised by the seller of the following:

Lease - Circa 976 years remaining

Service charge - Ad Hoc (circa £400pa)

Ground Rent - N/A

Goodwyn Avenue is positioned just 0.2 miles from the shops and restaurants found on Mill Hill Broadway as well as Mill Hill Broadway Train Station (Thameslink).

### Features

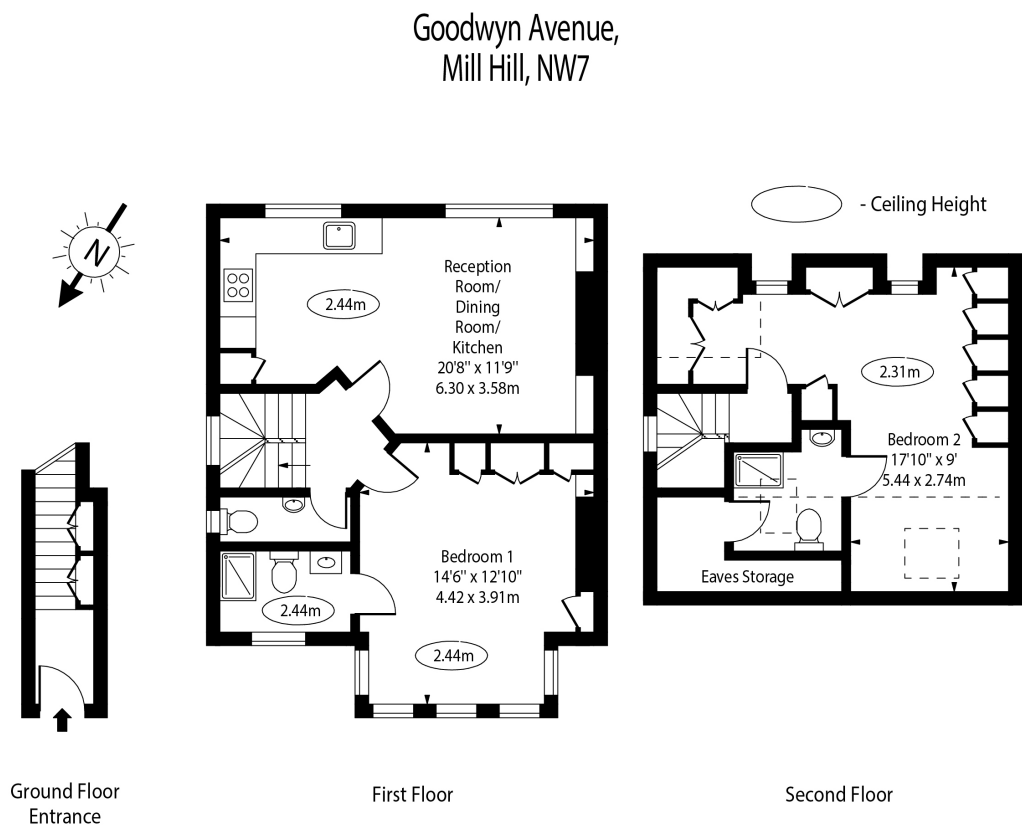
- Two Double Bedrooms
- Top Floor Flat
- Long Lease
- Immaculately Presented
- Ideal First Time Purchase & Sold Chain Free
- 0.2 Miles From Mill Hill Broadway
- Impressive Open Plan Kitchen/Reception
- Offering Circa 900 Sq Ft (\*83 Sq M) Of Internal Space.
- Two En-suites + Separate WC
- Opportunity For Turn-Key Sale







# Goodwyn Avenue, Mill Hill, NW7



Approx Gross Internal Area    767 Sq Ft - 71.25 Sq M

Approx Floor Area Including Restricted Heights    898 Sq Ft - 83.42 Sq M

For Illustration Purposes Only - Not To Scale Floor Plan by [www.nogaphotostudio.com](http://www.nogaphotostudio.com) Ref: No.52740

This floor plan should be used as a general outline for guidance only. Any intending purchaser or lessee should satisfy themselves by inspection, searches, enquiries and full survey as to the correctness of each statement. Any areas, measurements or distances quoted are approximate and should not be used to value a property or be the basis of any sale or let.