



## **Metcalf Court, John Harrison Way, LONDON, SE10 0BZ**

**£425,000**

Fantastic second floor two bedroom, two bathroom apartment situated in the popular Millennium Village development, this beautifully presented, well appointed property is full of natural light and offers spacious accommodation throughout.

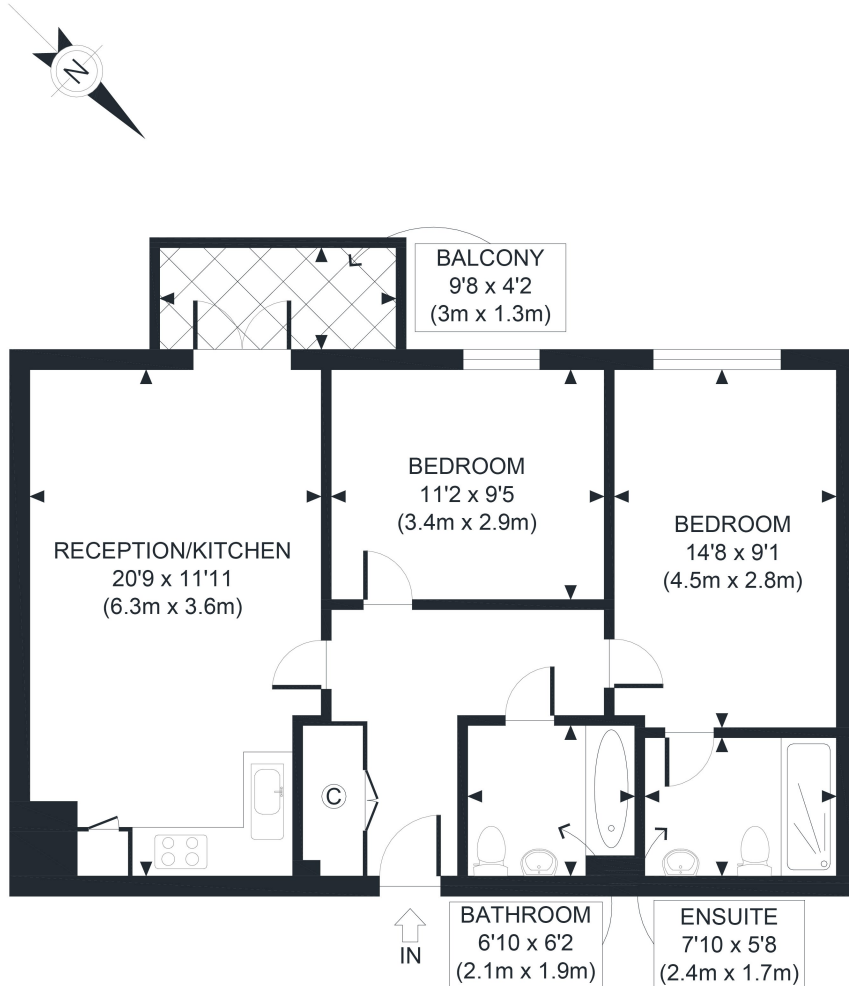
Further benefits include a private balcony, residents communal garden, 24 hour concierge services and onsite shops and pharmacy. The development is located a short walk from North Greenwich tube station (Jubilee Line), the Emirates Cable Cars and the O2 with the many attractions within, including bars and restaurants. It is also within walking distance to Sainsburys, Aldi, Asda and Ikea. The development is also home to an excellent primary school, nursery and Eco park.

Viewing by appointment with 1st avenue.

**Call: 020 8293 8600**

1st avenue, 128 Metcalfe Court, West Parkside, London SE10 0EL  
email: [info@1stavenue.co.uk](mailto:info@1stavenue.co.uk)

# Metcalfe Court, John Harrison Way, **£425,000** LONDON, SE10 0BZ



SECOND FLOOR  
GROSS INTERNAL  
FLOOR AREA 685 SQ FT

APPROX. GROSS INTERNAL FLOOR AREA 685 SQ FT / 64 SQM

Ref:

Copyright **photoplan** 

Disclaimer: Floor plan measurements are approximate and are for illustrative purposes only. While we do not doubt the floor plan accuracy and completeness, you or your advisors should conduct a careful, independent investigation of the property in respect of monetary valuation

Viewing by appointment with 1st avenue.

**Call: 020 8293 8600**

1st avenue, 128 Metcalfe Court, West Parkside, London SE10 0EL  
email: [info@1stavenue.co.uk](mailto:info@1stavenue.co.uk)