



7 The Meadows, Douglas, Isle of Man. IM2 1NQ

A well maintained low maintenance spacious detached family home with family room extension to the rear. Quiet sought after cul-de-sac. Private sunny rear garden.



£735,000 Freehold

PROPERTY DESCRIPTION

ACCOMMODATION This large detached family home should potentially tick every box for modern family living. Located within a highly regarded cul-de-sac on the South side of Douglas this exceptionally spacious property is offered without any onward chain therefore a quick transaction should be possible.

The accommodation downstairs briefly comprises of a spacious hallway with cloakroom, large lounge with double doors to dining room, large 22ft kitchen and separate utility room, plus additional family room extension to the rear.

On the first floor there is a large bright and airy galleried landing, 4 double bedrooms all with wardrobes, an en-suite bathroom and a family shower room.

Outside there are private sunny lawned gardens, a large driveway and an integral double garage.

An internal inspection is recommended in order to appreciate the spacious accommodation on offer along with the superb location and private gardens.

FEATURES

- Large Detached Family Home
- Quiet Sought After Cul-de-Sac
- Family Room Extension to the Rear
- Lounge, Dining Room and Family Room
- Large kitchen plus Utility Room
- 4 Double Bedrooms (1 En Suite) plus Bathroom
- Integral Double Garage & Large Driveway
- Sunny Private gardens
- No Onward Chain
- Viewing Recommended



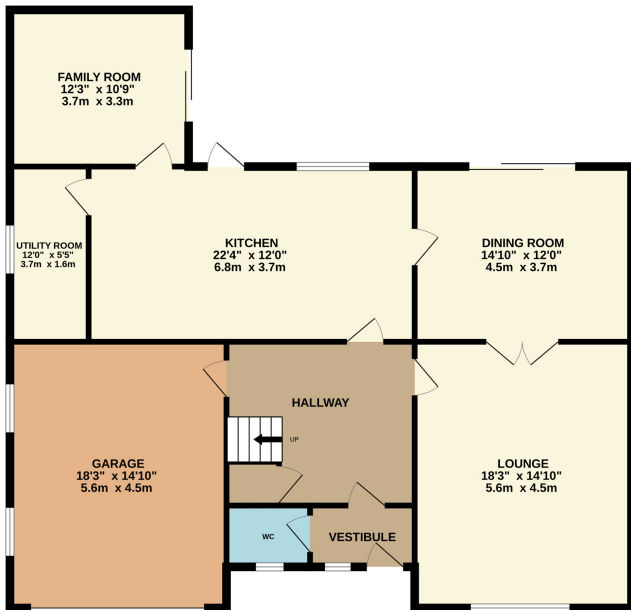
Property Images



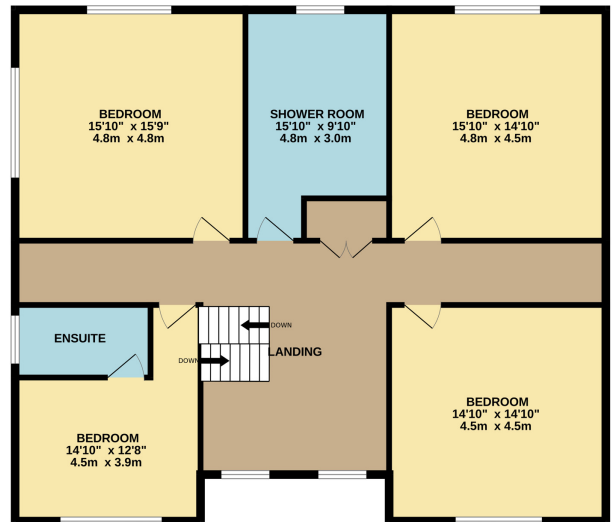
FLOORPLAN



GROUND FLOOR
1381 sq.ft. (128.3 sq.m.) approx.



1ST FLOOR
1375 sq.ft. (127.8 sq.m.) approx.



TOTAL FLOOR AREA : 2756 sq.ft. (256.0 sq.m.) approx.

Whilst every attempt has been made to ensure the accuracy of the floorplan contained here, measurements of doors, windows, rooms and any other items are approximate and no responsibility is taken for any error, omission or mis-statement. This plan is for illustrative purposes only and should be used as such by any prospective purchaser. The services, systems and appliances shown have not been tested and no guarantee as to their operability or efficiency can be given.
Made with Metropix ©2026

DISCLAIMER: Whilst Manxmove Ltd believe that these details are correct, neither Manxmove Ltd or their clients guarantee their accuracy in any way. Consequently, these details are not to be used to form part of any legally binding contract. Prospective purchasers or tenants are advised to visit this property to satisfy themselves as to the correctness of these details. Please note, we use wide angle camera lenses in order to show as much of each room as possible. This is not intended to mislead any prospective purchasers or tenants in any way and an honest verbal description is always available prior to viewing if required.