

Waterford Park

Radstock, BA3 3TS

COOPER
AND
TANNER



£245,000 Freehold

 3  1  1 EPC C

Description

A superb, three bedroom, first time buyer home located in a tucked away position with enclosed gardens to the front and rear. There is a single garage in a block and the property is in need of some modernisation and updating. In brief the accommodation comprises an entrance porch with door into the lounge/diner which has a staircase rising to the first floor, kitchen with a range of fitted wall and base units with space for appliances and a door leading through to the conservatory which overlooks the garden. To the first floor there are three bedrooms and a shower.

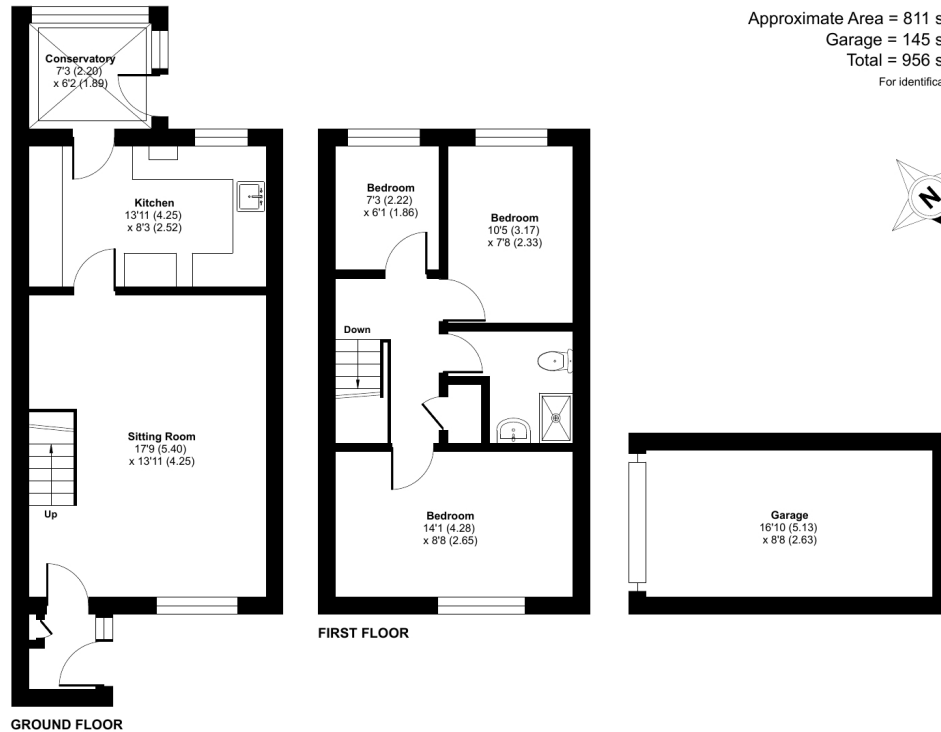
Waterford Park, Westfield, Radstock, BA3

Approximate Area = 811 sq ft / 75.3 sq m

Garage = 145 sq ft / 13.4 sq m

Total = 956 sq ft / 88.7 sq m

For identification only - Not to scale



Floor plan produced in accordance with RICS Property Measurement 2nd Edition, incorporating International Property Measurement Standards (IPMS2 Residential). © nichcom 2026. Produced for Cooper and Tanner. REF: 1402569



Features

- Mid terrace house in tucked away position
- In need of some modernisation
- Garage in a block
- Gardens to the front and rear
- Lounge/diner
- Kitchen
- Conservatory
- Three bedrooms
- Bathroom
- Viewing recommended

Local Information

- Council Tax Band B
- Tenure Freehold
- EPC Rating C

MIDSOMER NORTON OFFICE

Telephone 01761 411010

14, High Street, Somerset BA3 2HP

midsomernorton@cooperandtanner.co.uk

**COOPER
AND
TANNER**

Important Notice: These particulars are set out as a general outline only for the guidance of intended purchasers and do not constitute, nor constitute part of, an offer or contract. All descriptions, dimensions, reference to condition and necessary permissions for use and occupation, warranties and other details are given without responsibility and any intending purchasers should not rely on the same as statements or representations of fact but must satisfy themselves by inspection or otherwise as to the correctness of each of them.

