



Brockenhurst Way, Bicknacre, CM3 4XW

Council Tax Band B (Chelmsford City Council)



£220,000 Freehold

Welcome to this ideal first-time or investment purchase - a charming one-bedroom freehold starter home.

Situated in a popular village location, this property offers a fantastic opportunity to step onto the property ladder or add to your investment portfolio. Upon entering the property you will be greeted by a bright and open plan living room, dining area, and kitchen. The seamless flow between these spaces creates a bright and spacious atmosphere, perfect for entertaining guests or relaxing. The fitted kitchen boasts an integrated gas hob and electric oven, providing all the essentials for culinary enthusiasts.

On the first floor the spacious bedroom features built in storage space and an en-suite bathroom with a white suite.

Outside there is a garden area in front of the property which offers outdoor space where you can enjoy the fresh air and soak up the sunshine. The property also provides off-road parking in front of the garden area for two cars, giving you peace of mind and easy access to your home. The gas central heating system and double glazed windows ensure a warm and cozy ambiance throughout the year.

With no onward chain, you can move in swiftly and start enjoying your new home without any delays. Whether you're a first-time buyer looking for a place to call your own or an investor seeking a portfolio expansion opportunity, this property ticks all the boxes.

Don't miss out and contact us today to arrange a viewing and take the first step towards owning this charming starter home.

## LOCATION

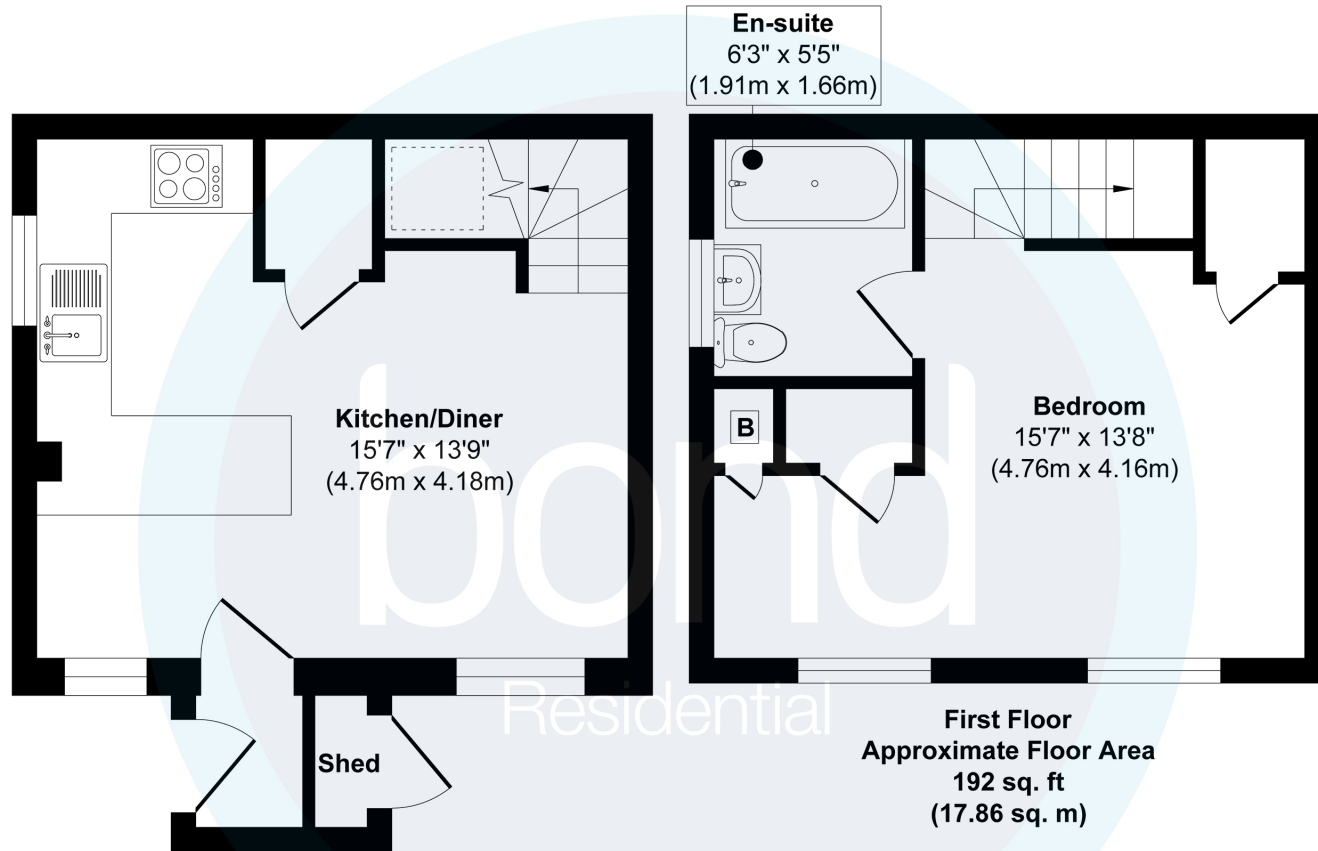
Bicknacre is a popular village located on the edge of Danbury about 5 miles southeast of the city of Chelmsford. The village has a long history dating back several centuries and is mentioned in the Domesday Book of 1086, where it is recorded as "Bichnacha." Over the years, the village has evolved from a primarily agricultural community to a more residential area.

In terms of amenities, Bicknacre has a primary school, a village hall, and a pub. The village also has a small range of shops and services to cater to the local community's needs. The village is surrounded by beautiful countryside, and the area offers opportunities for outdoor activities such as walking, cycling, and horse riding. The nearby villages of Woodham Ferrers and Danbury provide additional amenities and attractions for residents and visitors. Bicknacre is a charming village that offers a peaceful rural lifestyle in the English countryside while being within easy reach of larger towns like Maldon and South Woodham Ferrers and cities like Chelmsford and Southend.

- Ideal First time or Investment purchase
- Open plan living room/ dining / kitchen
- Bedroom with built in storage and en-suite bathroom
- Enclosed garden area
- No onward chain
- One bedroom freehold starter home
- Fitted kitchen with integrated gas hob and electric oven
- Gas central heating & double glazing
- Off road parking for 2 cars
- Popular village location







**Ground Floor**  
**Approximate Floor Area**  
**226 sq. ft**  
**(21.06 sq. m)**

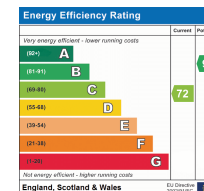
**First Floor**  
**Approximate Floor Area**  
**192 sq. ft**  
**(17.86 sq. m)**

**Approx. Gross Internal Floor Area 418 sq. ft / 38.92 sq. m**

Illustration for identification purposes only, measurements are approximate, not to scale.

Produced by Elements Property

Consumer Protection from Unfair Trading Regulations 2008 and the Business Protection from Misleading Marketing Regulations 2008. Bond Residential have made every effort to ensure that consumers and/or businesses are treated fairly and provided with accurate material information as required by law. We have not tested any apparatus, equipment, fixture, fitting or any services and as such are unable to verify they are in working order, fit for their purpose, or within the ownership of the seller or landlord. Neither have we been able to check the legal documentation to verify the legal status of the property. We therefore advise potential buyers or tenants to verify these matters with their own solicitors or other advisers.



10, Maldon Road,  
 Danbury, Essex, CM3 4QQ  
**Telephone: 01245 222856**  
**Website: www.bondresidential.co.uk**