

Bridgwater Buildings

Castle Cary, BA7 7DU

COOPER
AND
TANNER



£180,000 Freehold

A charming one bedroom cottage offering cosy living and a peaceful setting in the heart of Castle Cary.

Bridgwater Buildings

Castle Cary

BA7 7DU

 1  1  1 EPC C

£180,000 Freehold

ACCOMMODATION

The reception room is a warm and inviting space centered around a log burner that brings charm and comfort, creating a relaxing area for everyday living that leads directly into the kitchen. The kitchen sits at the rear of the ground floor and provides practical workspace and storage, with stairs rising from this room to the first floor landing. From the landing there is access to the bathroom, which is well proportioned with natural light and space for essential fittings, and to the double bedroom which offers a comfortable and peaceful setting with room for a double bed and additional furnishings as well as the handy use of fitted wardrobes.

OUTSIDE

The property includes a front garden that offers a pleasant outdoor space with room for planting, seating or creating a small area to enjoy the surroundings. While the garden would benefit from some attention, it provides a lovely opportunity for someone to shape it to their own taste and make the most of the setting. A practical shed sits within the space and offers helpful storage for tools or outdoor items.

SERVICES

The property benefits from gas fired central heating, mains electricity and mains water and drainage. The property is within the are of Somerset Council and is Band B.

LOCATION

Castle Cary is a vibrant and historic Somerset market town known for its welcoming community, independent shops and attractive architecture. The town offers a range of amenities including cafes, pubs, a weekly market and essential services. Excellent transport links include a mainline railway station with direct services to London and the South West, along with convenient road connections to nearby towns and countryside. The area is surrounded by beautiful landscapes, making it ideal for walking and outdoor pursuits.

VIEWING ARRANGEMENTS

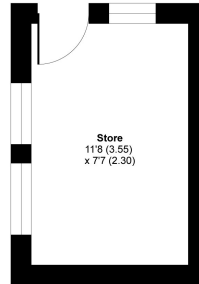
All viewings to be arranged through Cooper and Tanner, Castle Cary on 01963 350327





Bridgwater Buildings, Castle Cary, BA7

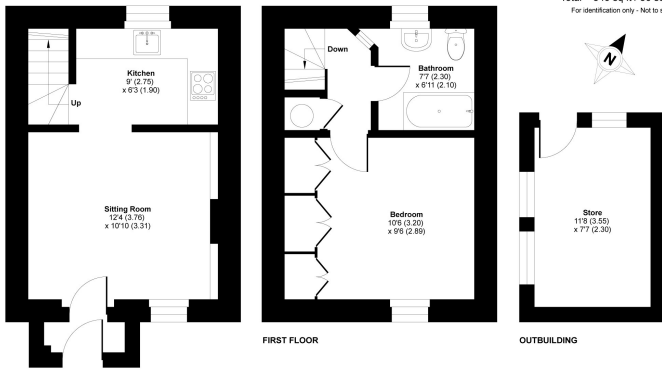
Approximate Area = 452 sq ft / 41.9 sq m
 Outbuilding = 88 sq ft / 8.1 sq m
 Total = 540 sq ft / 50 sq m
 For identification only - Not to scale



OUTBUILDING

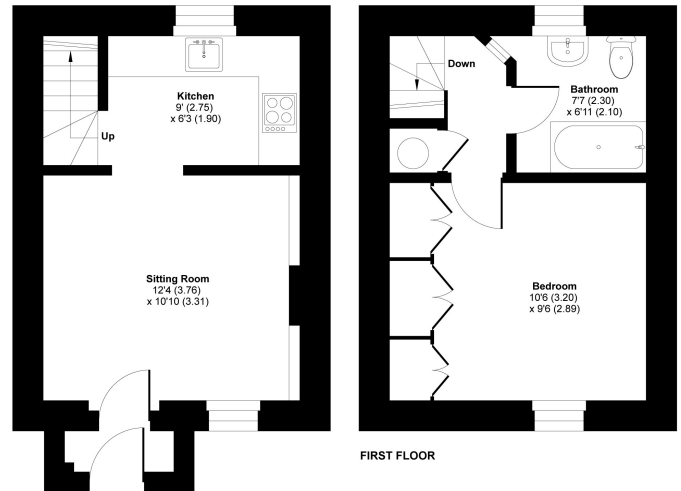
Bridgwater Buildings, Castle Cary, BA7

Approximate Area = 452 sq ft / 41.9 sq m
 Outbuilding = 88 sq ft / 8.1 sq m
 Total = 540 sq ft / 50 sq m
 For identification only - Not to scale



GROUND FLOOR

Floor plan produced in accordance with RICS Property Measurement 2nd Edition, Incorporating International Property Measurement Standards (IPMS2 Residential). © nchecom 2025. Produced for Cooper and Tanner. REF: 1434780



FIRST FLOOR

GROUND FLOOR

Floor plan produced in accordance with RICS Property Measurement 2nd Edition, Incorporating International Property Measurement Standards (IPMS2 Residential). © nchecom 2025. Produced for Cooper and Tanner. REF: 1434780

CASTLE CARY OFFICE

Telephone 01963 350327

Fore Street, Castle Cary, Somerset BA7 7BG

castle Cary@cooperandtanner.co.uk

**COOPER
AND
TANNER**

Important Notice: These particulars are set out as a general outline only for the guidance of intended purchasers and do not constitute, nor constitute part of, an offer or contract. All descriptions, dimensions, reference to condition and necessary permissions for use and occupation, warranties and other details are given without responsibility and any intending purchasers should not rely on the measurements or representations of fact but must satisfy themselves by inspection or otherwise as to the correctness of each of them.

