



128, Icknield Way

Letchworth Garden City,
Hertfordshire, SG6 4AW

£460,000

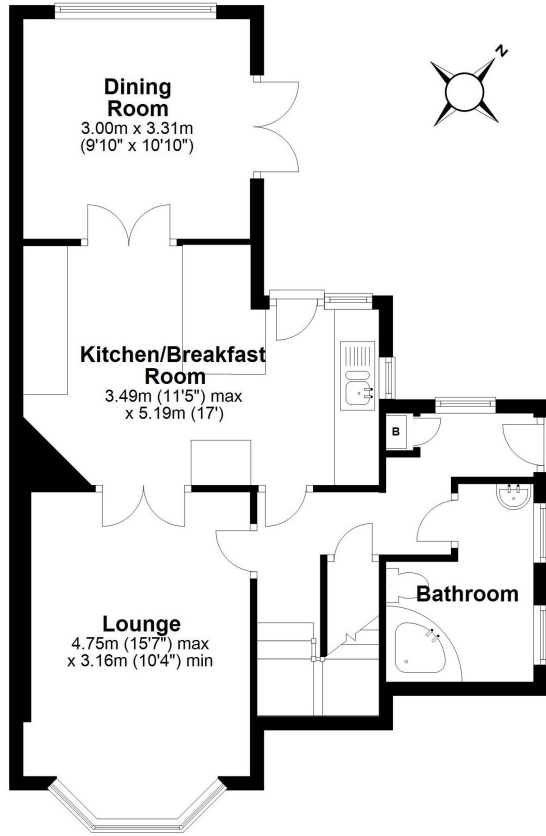
country
properties

Extended three bedroom semi detached home located within walking distance of the town centre, train station and a number of popular schools. Offered with vacant possession and no upper chain. On the ground floor is a fitted kitchen/breakfast room with integrated double oven and induction hob, spacious lounge and a separate dining room overlooking the garden. The family bathroom is also on the ground floor. Upstairs are three double bedrooms, one with a dressing area and separate WC. Externally are mature gardens, a single garage and workshop.

- Offered with vacant possession with no upper chain.
- Freehold
- Two separate reception rooms.
- Fitted kitchen/breakfast room with integrated oven and hob.
- Ground floor bathroom.
- Gas central heating and double glazing.
- Three double bedrooms one with a dressing area.
- Mature gardens.
- Single garage and workshop.

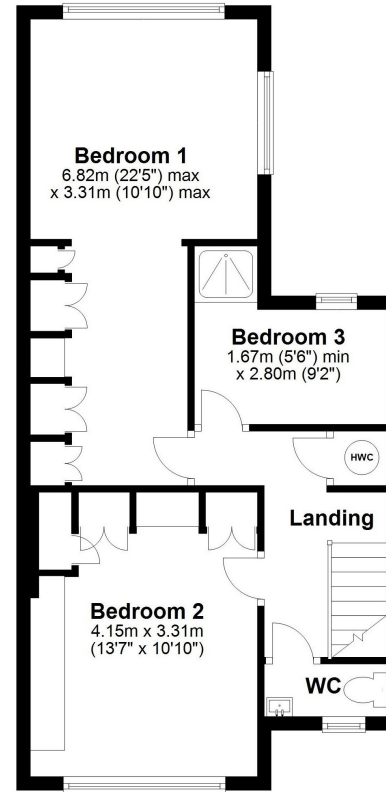






Ground Floor

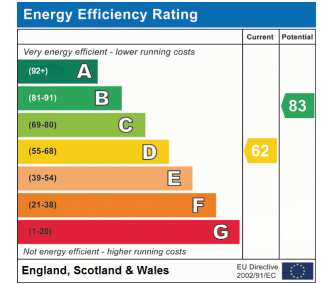
Approx. 56.3 sq. metres (606.2 sq. feet)



First Floor

Approx. 47.8 sq. metres (514.1 sq. feet)

Total area: approx. 104.1 sq. metres (1120.3 sq. feet)



All measurements are approximate and quoted in metric with imperial equivalents and for general guidance only and whilst every attempt has been made to ensure accuracy, they must not be relied on. The fixtures, fittings and appliances referred to have not been tested and therefore no guarantee can be given and that they are in working order. Internal photographs are reproduced for general information and it must not be inferred that any item shown is included with the property. For a free valuation, contact the numbers listed on the brochure.

Viewing by appointment only

Country Properties | 7, Howard Park Corner | SG6 1PQ

T: 01462 481100 | E: simon.ellmers@country-properties.co.uk

www.country-properties.co.uk

country
properties