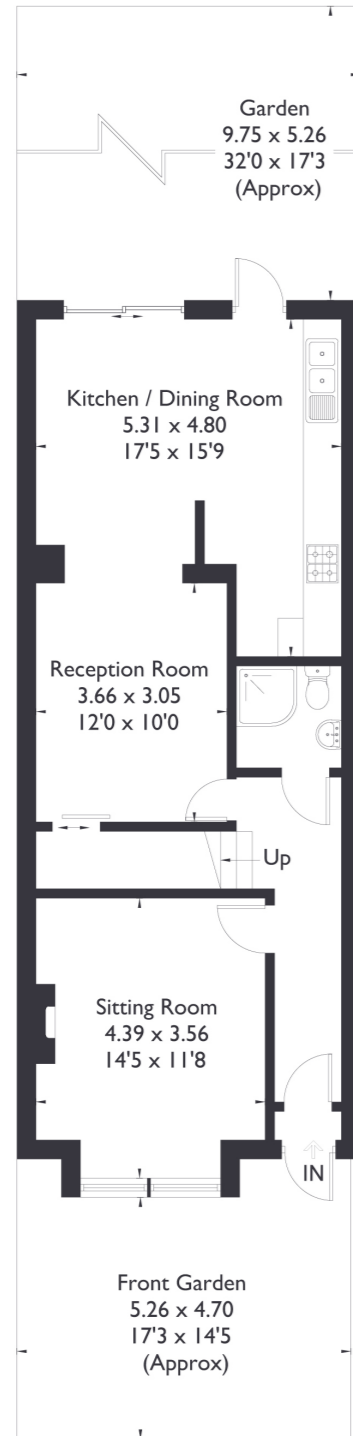
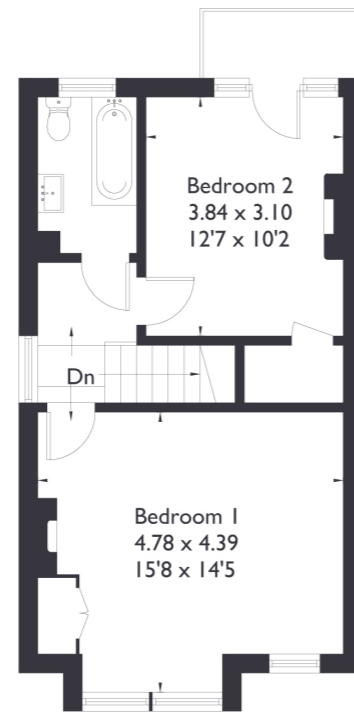


Midhurst Road, W13

Approximate Floor Area = 107 sq m / 1152 sq ft



Ground Floor



First Floor



2 BEDROOM HOUSE

Midhurst Road, W13

£850,000

Welcome to this stunning two bedroom, two bathroom property nestled on the highly sought after Midhurst Road in Northfields. This charming home boasts a spacious and separate reception room on the ground floor, along with a convenient shower room. An open-plan through-room seamlessly connects to the kitchen, creating a wonderful flow throughout the living space.

FEATURES

- Chain Free/Vacant
- Two Bedrooms
- Two Bathrooms
- Open Kitchen/Dining
- Views of Fielding Walk
- Northfields Station
- Potential To Extend (STPP)
- Fielding Primary School
- EPC Rating D



2 BEDROOM HOUSE

Midhurst Road, W13

Upstairs, you'll find two generously sized double bedrooms, one of which features a balcony with picturesque views overlooking Fielding Walk. A well appointed bathroom completes the upper level.

This property also offers exciting potential for a loft extension (subject to planning permission) and falls within the catchment area for the highly regarded Fielding Primary School.

Perfectly located, it's just a short stroll to Northfields Station and Boston Manor Station, offering excellent transport links and easy access to local amenities. Don't miss the opportunity to make this fantastic property your new home!

EPC Rating D.

