



Saxon Court

11 Saxon Court | Queen Street | Hitchin | Hertfordshire | SG4 9TB

www.stonegate-estates.co.uk



SAXON COURT

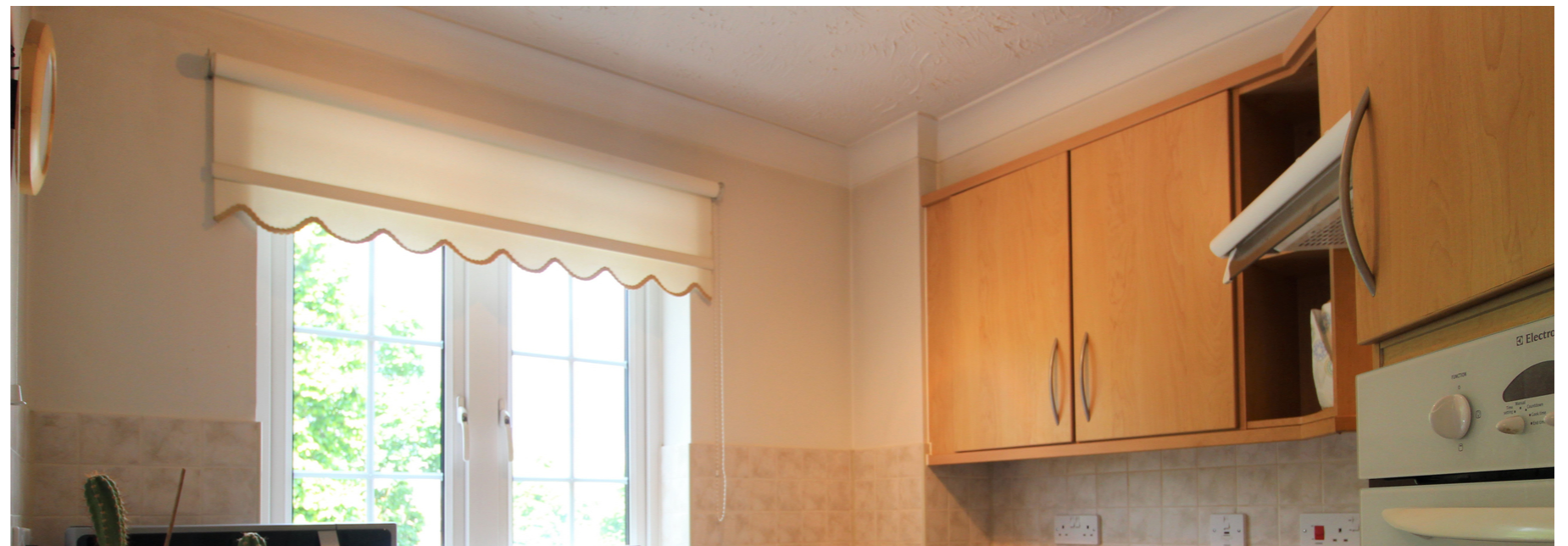
Property Description

We are delighted to offer for sale this two double bedrooomed upper ground floor retirement property situated within the ever popular Saxon Court development.

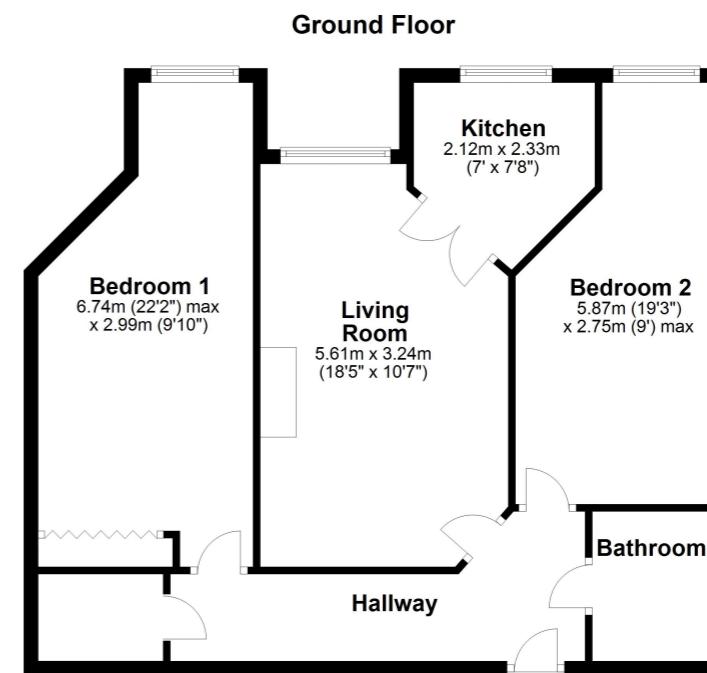
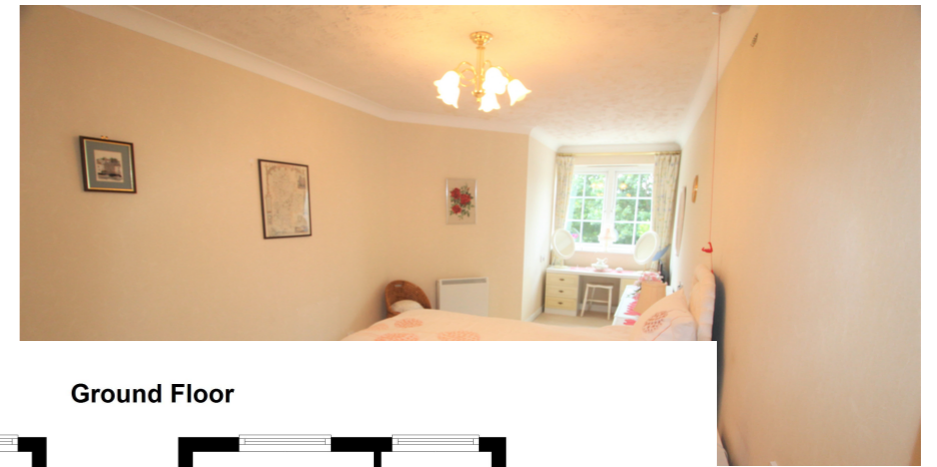
The development boasts a house manager, 24 hour 'Careline' and camera entry system, a laundry room and a residents lounge. A guest suite is also available as is off road parking and a mobility scooter park.

The apartment is placed well for access to the town centre and is offered with no onward chain.

Hitchin town centre provides a broad range of shops and a regular traditional market; together with a good selection of restaurants, bars and pubs within its historic centre. The town also provides a swimming centre, theatres and a library; whilst the commuter is served by the mainline railway station (Kings Cross - 30 minutes) and direct links to the A1(M).



£280,000 Leasehold



All measurements shown are approximate and for guidance only. Garages and workshops are not included in any gross floor areas unless integral to the main building where they will be included.
Plan produced using PlanUp.

Saxon Court, Hitchin



- Two Bedroom Retirement Apartment
- Upper Ground Floor
- Communal Gardens
- Development Manager on Site
- Town Centre Location
- Delightful Communal Gardens
- Communal Lounge
- Scooter Park
- Lease 105 years

EPC Rating: B

Stonegate Estate Agents

01462 438979

sales@stonegate-estates.co.uk | www.stonegate-estates.co.uk

