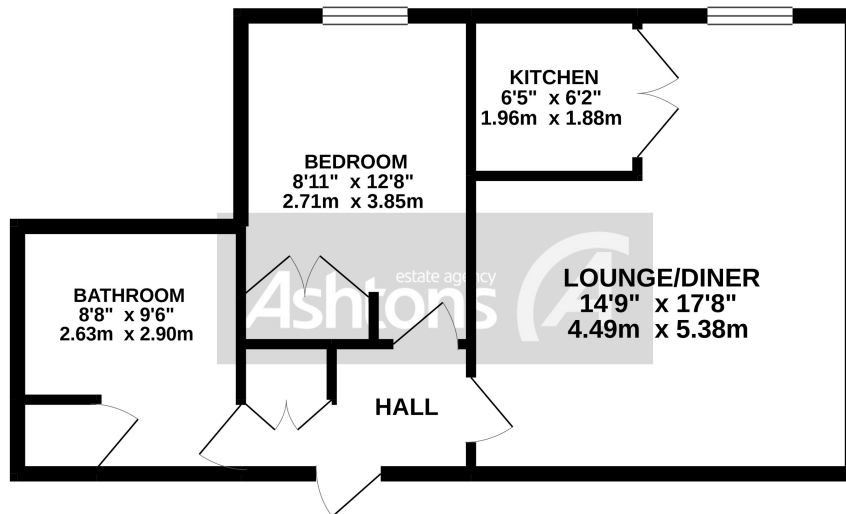




*Flat 10 Brindley Court, Stockton Heath.
£120,000*



GROUND FLOOR
498 sq.ft. (46.3 sq.m.) approx.



TOTAL FLOOR AREA - 498 sq.ft. (46.3 sq.m.) approx.
Whilst every attempt has been made to ensure the accuracy of the floorplan contained here, measurements of doors, windows, rooms and any other items are approximate and no responsibility is taken for any error, omission or mis-statement. This plan is for illustrative purposes only and should be used as such by any prospective purchaser. The services, systems and appliances shown have not been tested and no guarantee as to their operability or efficiency can be given.
Made with Metropix ©2021

This select development of just 35 apartments was constructed by McCarthy & Stone to provide secure residential accommodation to over 55's and benefits from a convenient location close to the centre of Stockton Heath Village. This first floor one bedroom apartment offers a well planned layout, as well as far reaching views into the village and direct access to the lift providing access to all floors. The property boasts a spacious master bedroom with fitted storage, a modern three piece bathroom and a generous open plan lounge/diner leading into the kitchen. The apartment also enjoys a fantastic communal area and gardens as well as laundry facilities. Externally there is unallocated off road parking, Brindley Court is ideally positioned for all local conveniences and is within walking distance of Stockton Heath Village which boasts an array of popular shops, bars and restaurants as well as excellent transport links.



**Contact your local office
to arrange a viewing:**

Padgate: 01925 479334
Great Sankey: 01925 454300
Winwick: 01925 232146
Stockton Heath: 01925 453400
St.Helens: 01744 754120
Wigan: 01942 498862
Culcheth: 01925 764744
Ashton-In-Makerfield: 01942 364446
Newton-Le-Willows: 01925 907770
Commercial Office: 01925 907709
Lettings Head Office: 01925 873533
Financial Services: 01925 221234

Viewing Arrangements

Viewing is strictly by appointment only through Ashtons Estate Agency.

Disclaimer Property Details

These particulars, whilst being believed to be accurate are set out as a general outline only for guidance and do not constitute any part of an offer or contract. Intending purchasers should not rely on them as statements of representation of fact, but must satisfy themselves by inspection or otherwise as to their accuracy. We have not carried out a detailed survey nor tested the services, appliances and specific furnishings. The measurements given are approximate. No person in this firm's employment has the authority to make or give any representation or warranty in respect of the property.

All details, photographs and floorplans are the copyright of Ashtons Estate Agency.



How much you can borrow?
Speak to a mortgage expert in your local office.

Ashtons Financial Services

Ashtons.net rightmove

PrimeLocation.com Zoopla.co.uk

Ashtons