



Plot 1 - The Hutton High Steads, The Hutton at High Steads, Durham, Tantobie
DH9 9FA



PROPERTY DESCRIPTION

The Hutton is a stone built four bedroom detached family home with an exclusive Garden Room and Integral Garage built by local family builder Forric Homes.

With a snug at the front of the home and an open plan kitchen, diner and garden room with bi-folding doors opening out to the large garden space, the Hutton is a truly unique home with flexible living space for everyone.

The Hutton is finished to a high specification with large family bathroom by Porcelanosa and beautiful en-suite to the principal bedroom with four spacious bedrooms in total.

These bespoke homes have been sympathetically built in the beautiful village of White Le Head and are designed and built for today's lifestyles with care, attention to detail and a superb quality finish. There are only nine of these beautiful homes in total, with only two homes remaining, all with outdoor spaces front and back, garages and driveway parking.

With great access to the countryside and villages of Durham, White le Head is located on the opposite side of the picturesque Tanfield Valley to the market town of Stanley. The development has been designed and constructed to blend seamlessly with the current buildings using local stone and mirroring architectural details. Each home has a front driveway, canopied front doors and a large garden. Established trees and shrubs have been retained around the boundary of the site.

Residents can take advantage of being close to the local independent shops, pubs and amenities but just a few minutes away from fabulous scenery, open spaces and the idyllic quiet of the county's hills and valleys.

Plot Availability:

Plot 1 - £365,000 - Move in Now - STAR PLOT, now with £5000 towards Stamp Duty (payable upon completion)





ROOM DESCRIPTIONS

Ground Floor

The front door leads to a large open hallway with a feature staircase. Onwards from the hallway is a separate living room and a flexible design led kitchen/living/dining space with sliding doors leading to a south west facing turfed garden and patio area.

First Floor

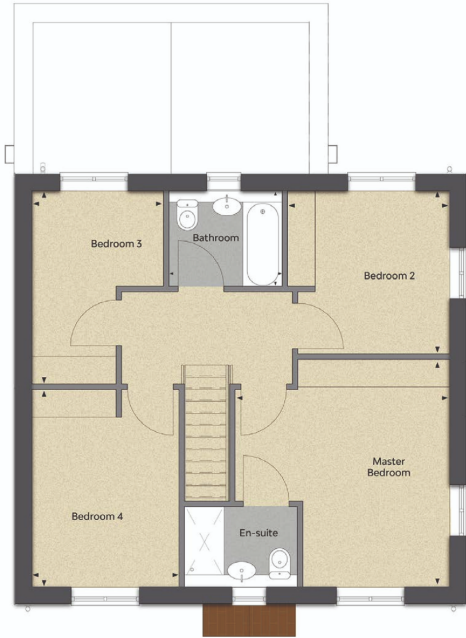
Upstairs there are three generous double bedrooms and a single bedroom with the principal accommodating an en-suite. All bathrooms and en-suites are fitted with wall hung toilets and vanity units and full height tiling to wet areas.



The property benefits from a large front driveway, canopied front doors and turfed gardens.



FLOORPLAN



THE HUTTON

ROOM	SIZE (LENGTH X WIDTH)	
Master Bedroom	4.28m	x 4.53m
Bedroom 2	3.23m	x 3.25m
Bedroom 3	2.55m	x 3.85m
Bedroom 4	2.93m	x 3.93m
Bathroom	2.26m	x 1.90m



THE HUTTON

ROOM	SIZE (LENGTH X WIDTH)	
Dining	5.56m	x 3.04m
Kitchen	3.02m	x 5.29m
Living	3.04m	x 4.76m
Garage	2.88m	x 5.33m