

# FOR SALE

Kings Court, Hamlet Gardens,  
Hammersmith, W6

Flat  
Ravenscourt Park

£280,000 lh

1  1  1 

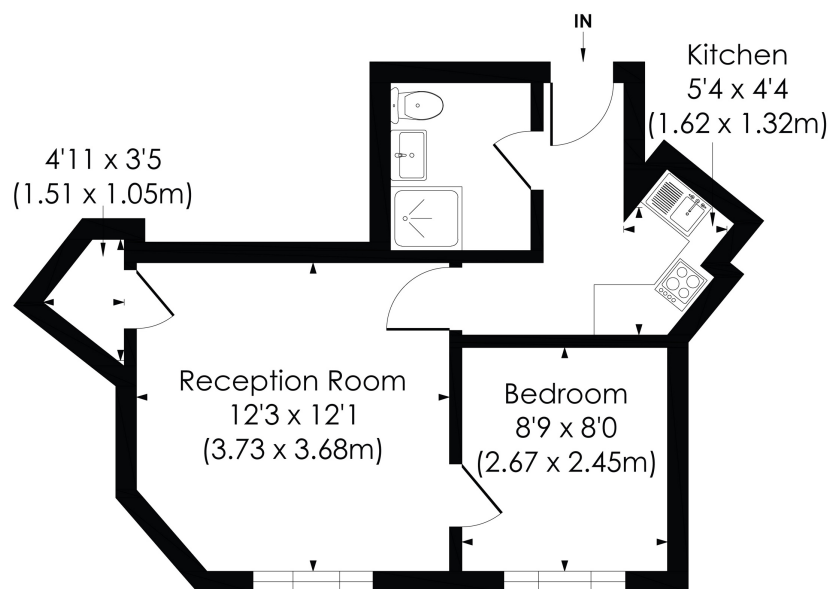


**horton  
andgarton**

SALES / LETTINGS / PROPERTY MANAGEMENT

[hortonandgarton.co.uk](https://hortonandgarton.co.uk) | Sales 020 8819 0510 | Lettings 020 8819 0511  
172 King Street, Hammersmith, W6 0QU





FIRST FLOOR

**HAMLET GARDENS, W6**

Approx. Gross Internal Floor Area  
**335 Sq'/31.16 SqM**

**horton  
andgarton**

© Pixangle Property Marketing Ltd. info@pixangle.com Tel: 0208 870 2118

This floor plan has been prepared for the purpose of illustration only in accordance with the latest RICS code of measuring practice and is not to scale. All measurements and areas are approximate and whilst every effort has been made to ensure the accuracy of the plan contained here, no responsibility is taken for any error, omission or misstatement.



Art Deco flat | One bedroom - One bathroom | 335 Sq' -  
31.16 SqM | Chain free | EPC rating C | Ravenscourt  
Park



hortonandgarton.co.uk  
Sales 020 8819 0510  
Lettings 020 8819 0511

172 King Street, Hammersmith, W6 0QU