





Set in the centre of the sought after coastal village of 'Sandgate you will find this charming two-bedroom ground floor apartment which offers the perfect blend of coastal living and modern convenience. Imagine waking up each day to the sight of the sea, just steps from your front door. Enjoy a peaceful morning sunrise while watching the waves roll in and out with stunning sea views as far as the French coast. Accommodation Comprises: Communal entrance hall, apartment entrance hall, kitchen, living/dining room with glazed sliding door to sun terrace enjoying glorious sea views and access to the beach, two bedrooms, bathroom/WC. OUTSIDE: Sun terrace and allocated parking. EPC RATING = C

Guide Price £250,000

Tenure Leasehold Share of Freehold

Property Type Flat

Receptions 1

Bedrooms 2

Bathrooms 1

Parking Allocated parking

Heating Gas

EPC Rating C

Council Tax Band B

Folkestone And Hythe District Council



Situation

The property is superbly located on the enviable Sandgate beach front. Sandgate boasts a popular village centre with a broad range of interesting antique shops, boutiques, public houses, artisan cafes, restaurants and village store. The area has a number of excellent local schools for both primary and secondary education including The Folkestone School for Girls and Harvey Grammar School for Boys. It is also situated in the catchment area for the ever popular Sandgate Primary School. The bustling Cinque Port of Hythe is two miles to the West which offers amenities including; Waitrose, Sainsbury's and Aldi, a wide variety of independent shops and larger retailers, doctors surgeries and dentists, swimming pool and leisure facilities, sports grounds and clubs and public houses and restaurants. The Port town of Folkestone is approximately two miles to the East offering the High Speed Rail Link to London and also the home of 'The Creative Quarter' which boasts a thriving collection of Artist's studios and creative businesses, as well as a wide range of amenities such as Shopping centre, Supermarkets, independent shops, restaurants and leisure facilities, Folkestone benefits from the recently restored Harbour Arm which has become an increasingly popular food, drink and entertainment destination for the town and its visitors.

Communal entrance with door entry system

Apartment hallway

Kitchen

13' 5" x 6' 8" (4.09m x 2.03m)

Living/dining room

13' 5" x 12' 8" (4.09m x 3.86m)

Bedroom one

12' 8" x 9' 9" (3.86m x 2.97m)

Bedroom two

12' 8" x 5' 9" (3.86m x 1.75m)

Bathroom/WC

Outside

Sun terrace

Allocated parking space

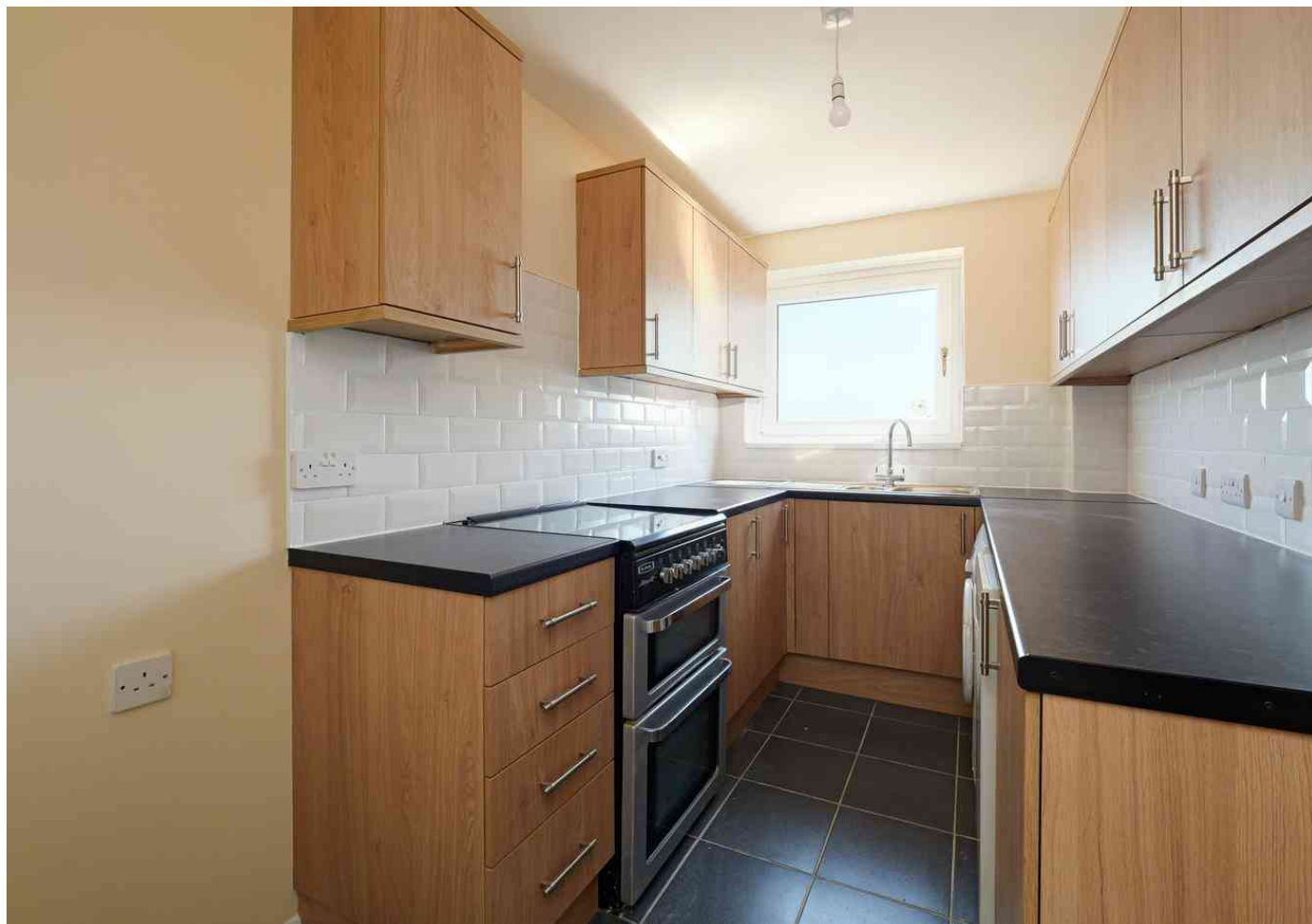
Additional information

Leasehold and share of Freehold

125 year Lease started in January 1982, Approx. 83 years remaining

Service charge - Approx. £1,560 per annum.

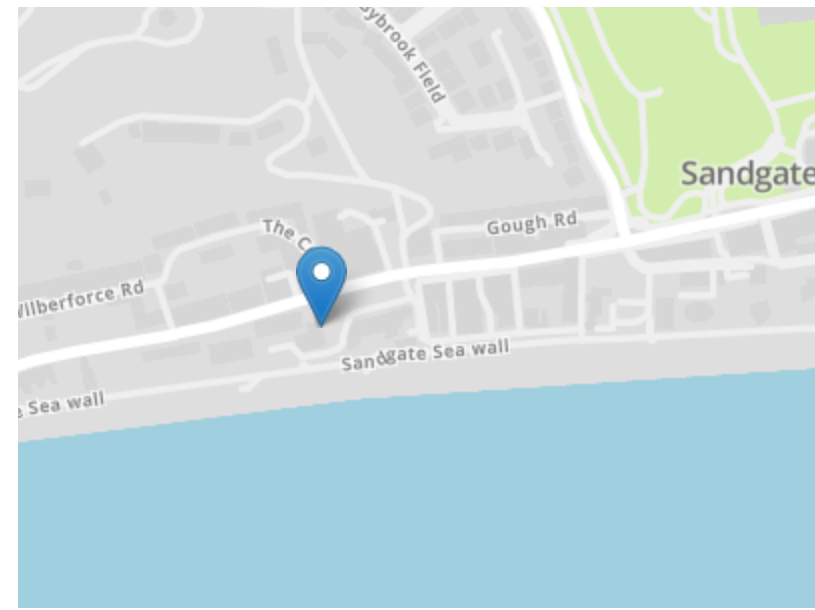
No ground Rent



Approximate Gross Internal Area (Including Low Ceiling) = 60 sq m / 643 sq ft



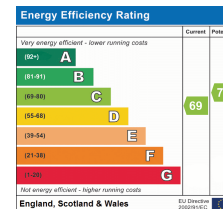
Illustration for Identification purposes only. Measurements are approximate. Dimensions given are between the widest points. Not to scale. Outbuildings are not shown in actual location.



Need to book a viewing?

If you would like to book a viewing please contact our office on 01303 863393 or email sales@laingbennett.co.uk

See all our properties at



www.laingbennett.co.uk

The Estate Office
8 Station Road
Lyminge
Folkestone
Kent
CT18 8HP



These property details are intended to give a fair description and give guidance to prospective Purchaser/Tenant. They do not constitute an offer or contract of Sale/Tenancy and all measurements are approximate. While every care has been taken in the preparation of these details neither Laing Bennett Ltd nor the Vendor/ Landlord accept any liability for any statement contained herein. Laing Bennett Ltd has not tested any services, appliances, equipment or facilities, and nothing in these details should be deemed to be a statement that they are in good working order or that the property is in good structural condition or otherwise. We advise all applicants to commission the appropriate investigations before Exchange of Contracts/entering into a Tenancy Agreement. It should not be assumed that any contents/furnishing, furniture etc. photographed are included in the Sale/Tenancy, nor that the property remains as displayed in the photographs. No person in the employment of Laing Bennett Ltd has authority to make or give any representation or warranty whatever in relation to this property.