

**3 Bedroom(s), Semi-Detached House, Freehold**

**Bowlease Gardens, Bessacarr, Doncaster.**



- 3D Virtual Tour Available
- Beautifully Presented Throughout
- Modern Kitchen
- Contemporary Family Bathroom
- Garage And Driveway Allowing For Multiple Cars To Park

- Three Bedroom Semi Detached Home
- Two Reception Rooms
- Utility and W/C
- Spacious Rear Enclosed Garden Benefiting From All Day Sun
- Popular Location

**£250,000  
For Sale**

*Book your viewing today* Tel: 01302 247754



All measurements provided are approximate and should be verified before exchange of contracts. No appliances have been tested and should be checked to ensure they are in good working order.



## Dining Room



## Utility Space

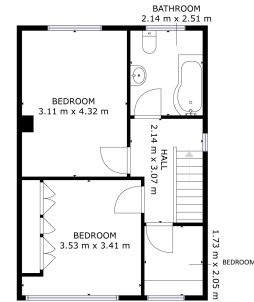


## W/C



## First Floor

### Floor Plan



FLOOR 2

GROSS INTERNAL AREA  
FLOOR 1: 51 m<sup>2</sup>, FLOOR 2: 42 m<sup>2</sup>  
TOTAL: 93 m<sup>2</sup>

SIZES AND DIMENSIONS ARE APPROXIMATE, ACTUAL MAY VARY.

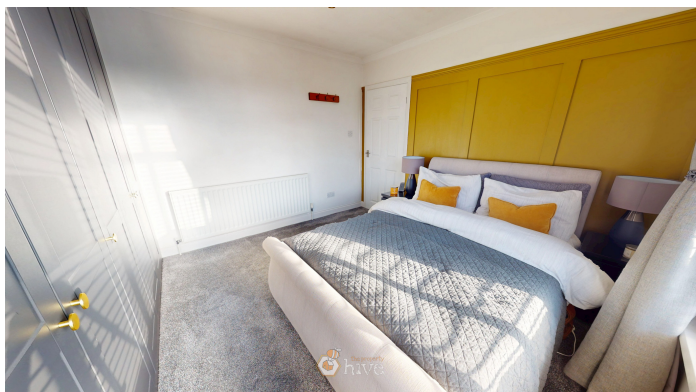
Matterport

## First Bedroom

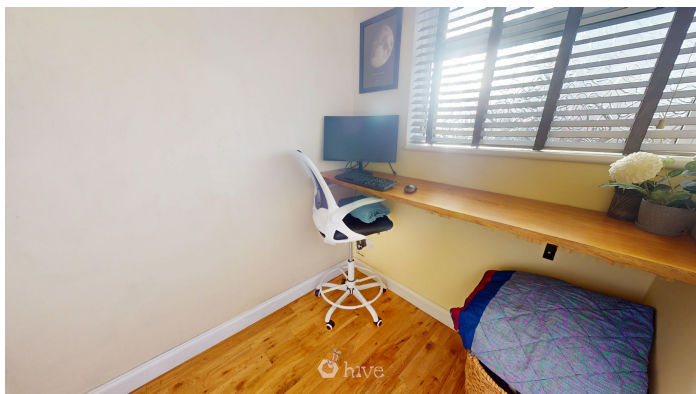




## Second Bedroom



## Third Bedroom



## Bathroom



## External

### Front Aspect



### Rear Garden



## Property Information

Council Tax Band - B

Utilities - Mains Gas, Mains Electricity, Mains Water

Water Meter - Yes

Tenure - Freehold

Solar Panels - No

Space Heating System - Gas Boiler with radiators





Approximate Heating System Installation Date -

Water Heating System - Gas boiler (Combi)

Approximate Water Heating Installation Date -

Boiler Location - Kitchen

Approximate Electrical System Installation Date -

Permanent Loft Ladder - Yes

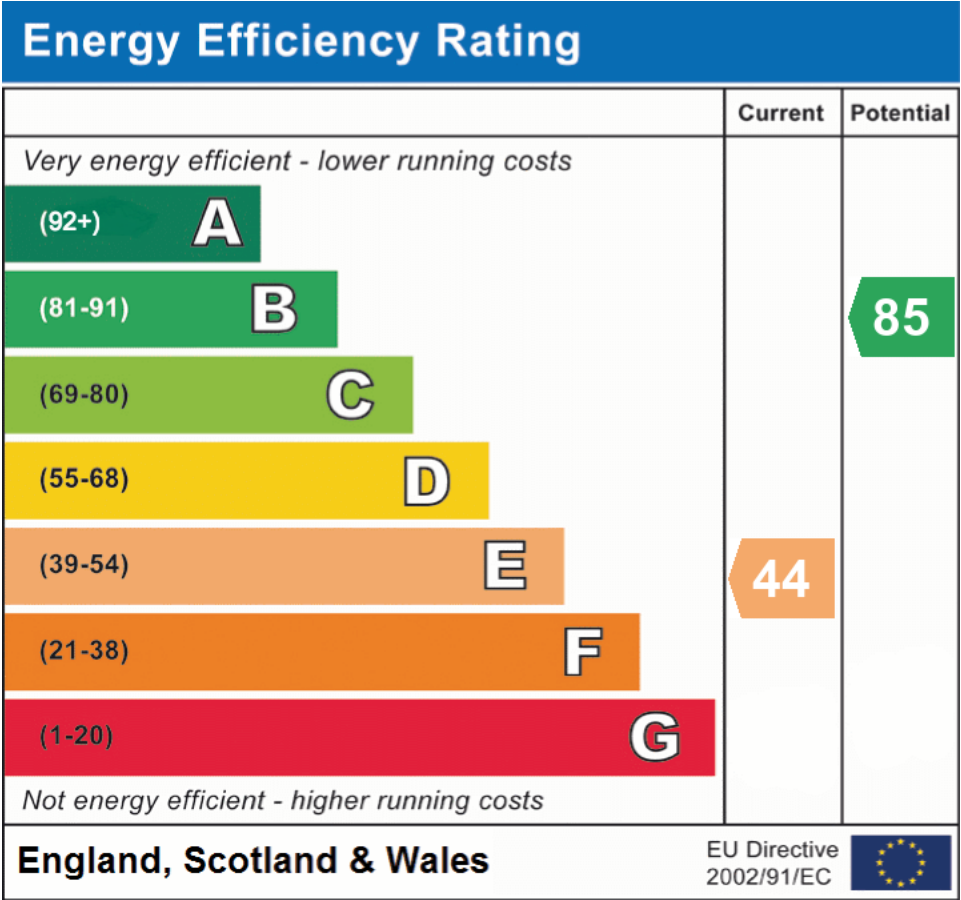
Loft Insulation - No

Loft Boarded out –Yes

Whilst every effort is made to ensure that the information contained in these particulars is reliable, they do not constitute or form part of an offer or any contract. The Property Hive accept no liability for the accuracy of the contents, and therefore they should be independently verified by prospective buyers or tenants before agreeing an offer. All measurements provided are approximate and should be verified before exchange of contracts. No appliances, fixtures or fittings have been tested and should be checked by the buyer before exchange of contracts to ensure they are in good working order.



## Energy Performance Certificate



All measurements provided are approximate and should be verified before exchange of contracts. No appliances have been tested and should be checked to ensure they are in good working order.