



Chandlery House

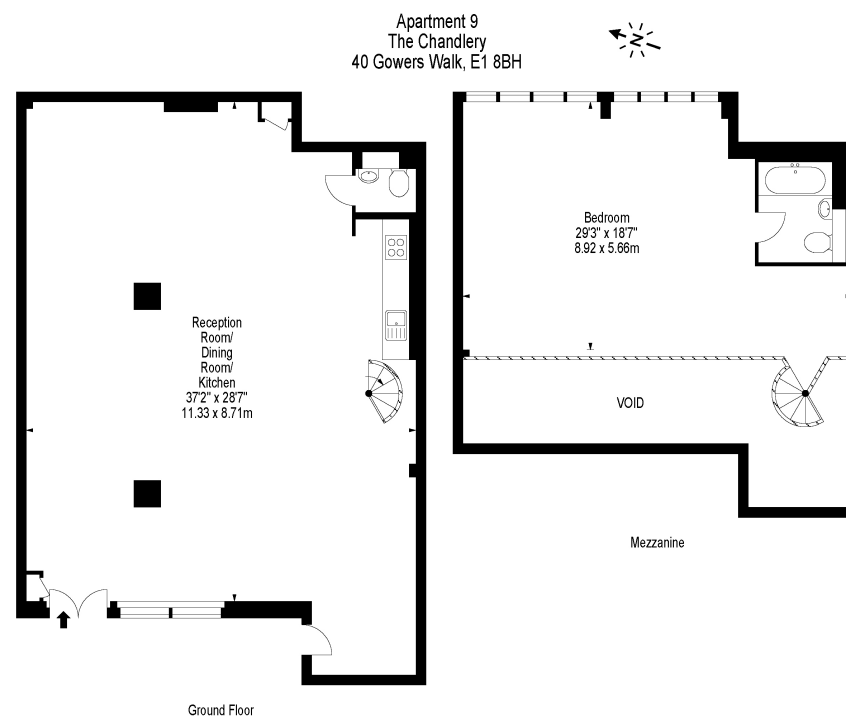
£750,000

Chandlery House, 40 Gowers Walk, London E1 8BH

A well presented 1,592 sq ft, loft style warehouse apartment with secure allocated parking offering flexible accommodation located within a sought after gated development with concierge, enjoying close proximity to Aldgate East and Tower Hill stations.

This stunning live/work apartment comprises expansive reception room with wood flooring, double height ceilings and original warehouse features with solid beams, open plan fitted kitchen with stone work tops and integrated appliances, spiral staircase leads to a first floor mezzanine level offering generous bedroom with fitted wardrobes and stylish contemporary en-suite shower and bathroom. The apartment has the benefit of a secure allocated parking space, concierge facilities and access to landscaped communal courtyards. Whitechapel, Brick Lane and Spitalfields Market are all moments away.

- Live-Work Unit
- One Double Bedroom
- Split Level Duplex Apartment
- Exposed Brickwork & Beams
- 1,592 Sq Ft
- Expansive Reception - Work Room
- Original Warehouse Features
- Excellent Location



Approx Gross Internal Area 1592 Sq Ft - 147.89 Sq M
Floor Plan Supplied For Identification Purposes Only And May Not Be Accurate
Floor Plan by www.elegantmediasolution.com



