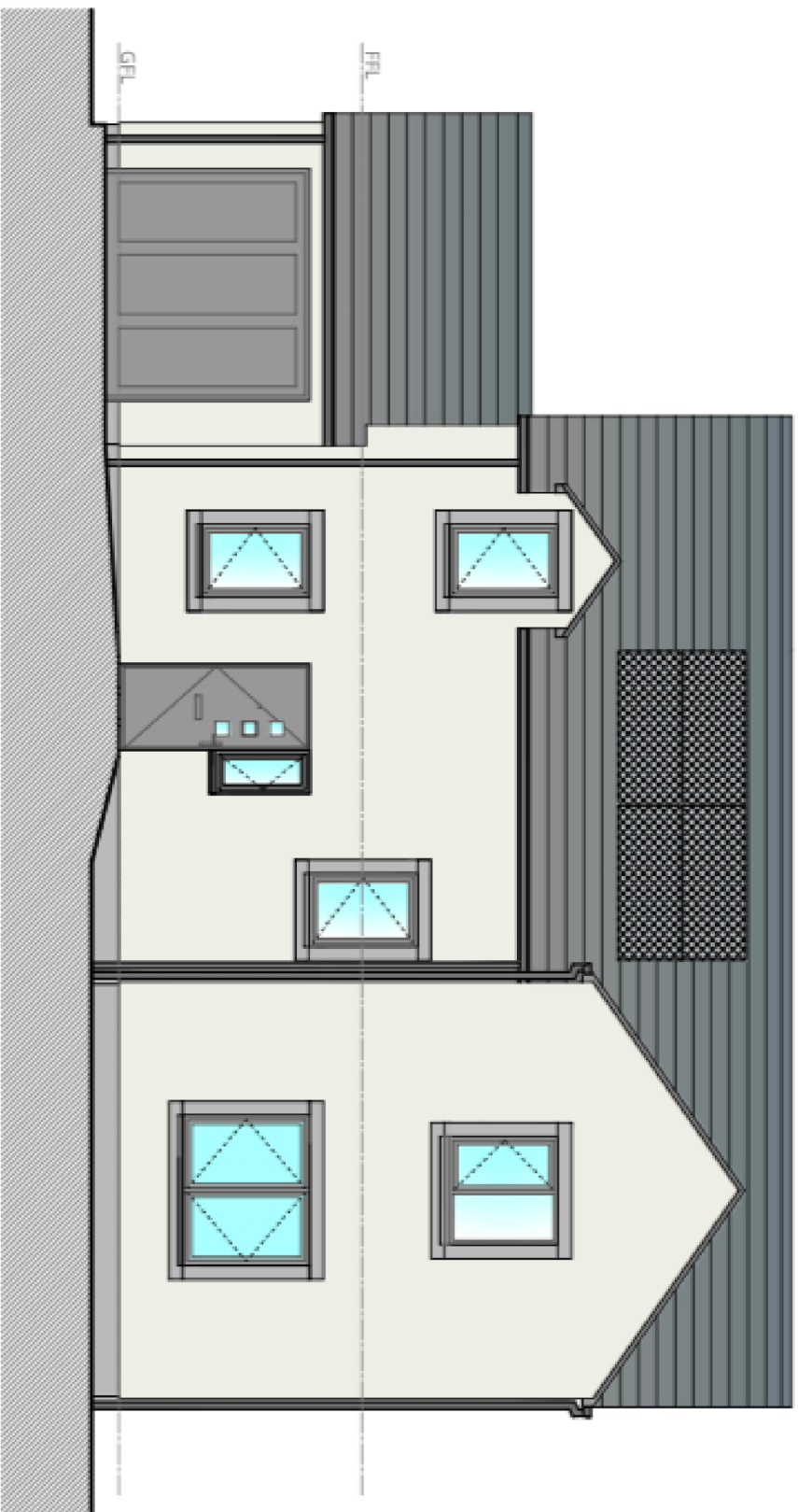


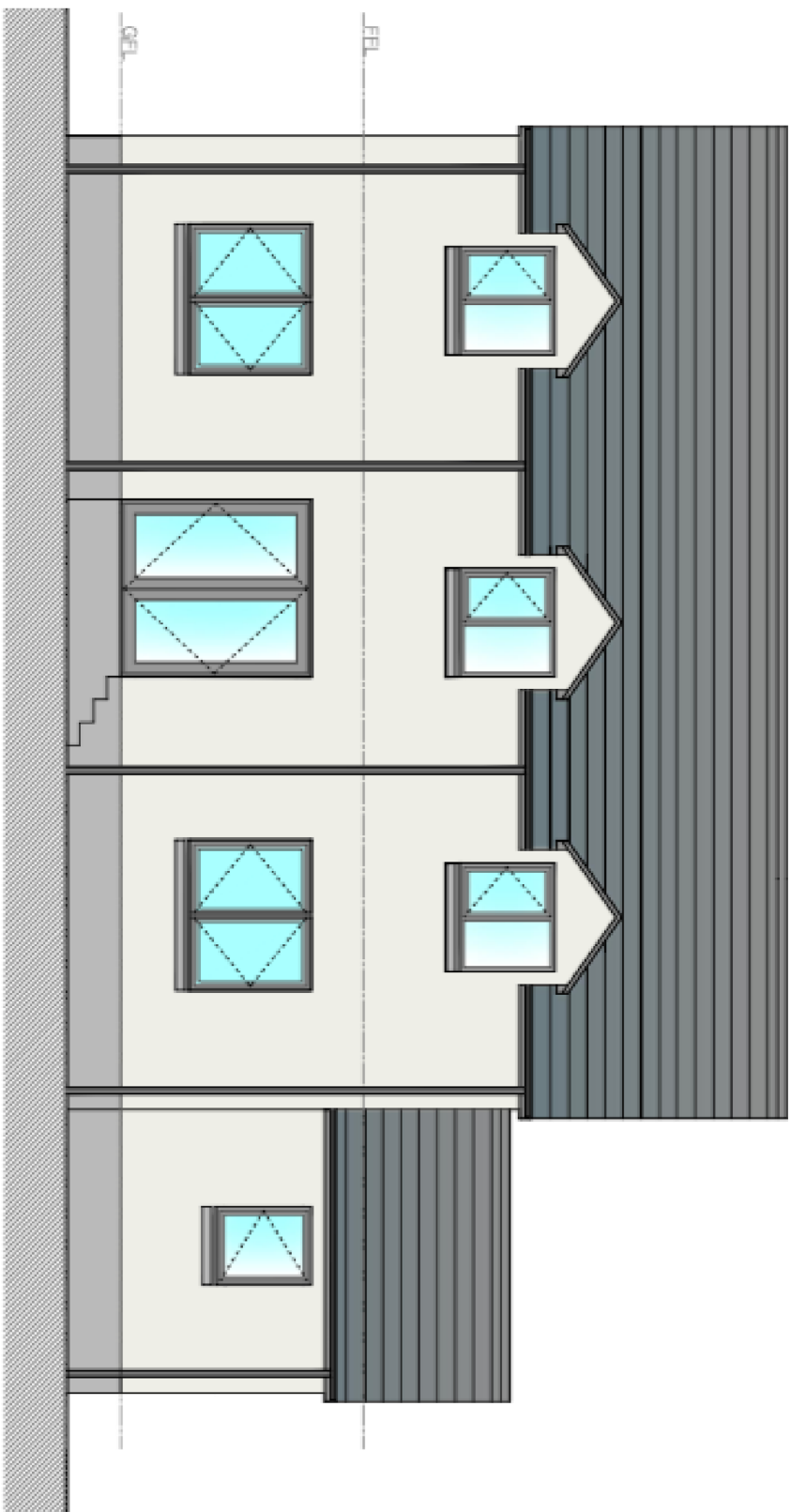


The Tweed 2



Hillside Drive, SELKIRK

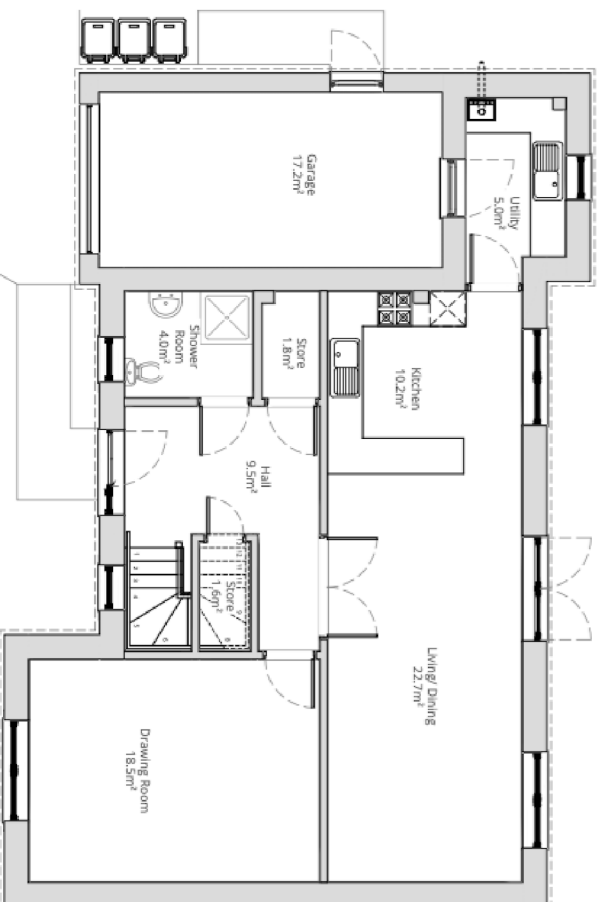




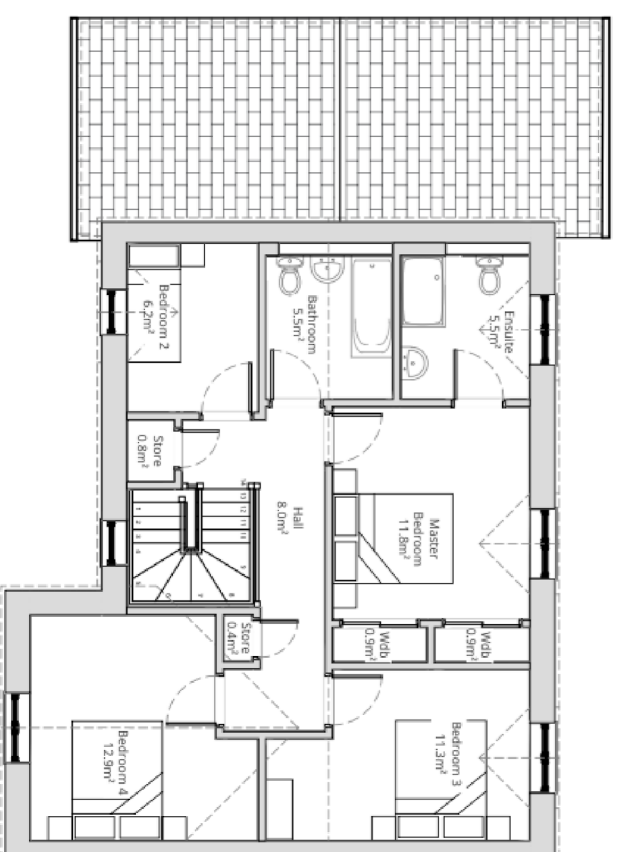
13 beautifully crafted homes by the Borders finest house builder

The Tweed 2

| Gross Internal Floor Area (sqm / sqft) | | |
|--|-----------|-----------|
| House exc. | 151.4 sqm | 1630 sqft |
| Garage | 17.2 sqm | 185 sqft |
| Entire House | 171.9 sqm | 1850 sqft |



GROUND FLOOR PLAN



FIRST FLOOR PLAN

While it is the policy of JS Crawford 3rd Generation to provide accurate information to prospective purchasers, the information contained herein shall not constitute or form part of any contract. All plans and dimensions are indicative and may not be to scale. The developers reserve the right to depart from the design layout and to amend or vary the terms of the specifications.
For further information on the detail of any particular property, please speak to a Sales Advisor.

Telephone today: 01896 822030 Visit us online at: jscrawford.co.uk

