



Becquerel Court, West Parkside, London, SE10 0QA

£1,350 PCM

Enjoying a fabulous North Greenwich location, this spacious one bedroomed apartment is situated on the third floor and briefly comprises open plan kitchen/reception, access to balcony, double bedroom and family bathroom. The apartment further benefits from 24 hour concierge and excellent transport links. Offered furnished. This property is available from the 8th July.

Viewing by appointment with 1st avenue.

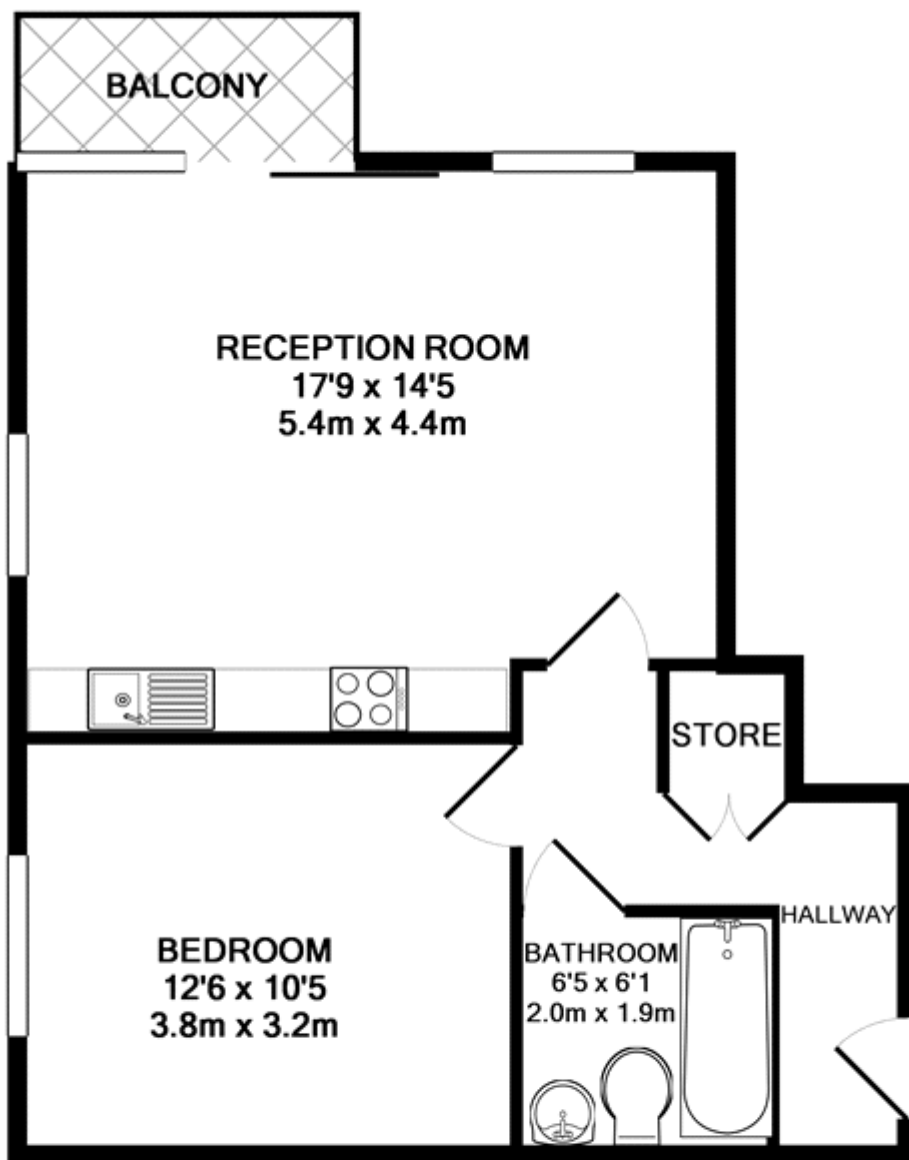
Call: 020 8293 8600

1st avenue, 128 Metcalfe Court, West Parkside, London SE10 0EL
email: info@1stavenue.co.uk

Becquerel Court, West Parkside, London, SE10 0QA

£1,350 PCM

1stavenue
Real Estate Services



TOTAL APPROX. FLOOR AREA 488 SQ.FT. (45.3 SQ.M.)

Whilst every attempt has been made to ensure the accuracy of the floor plan contained here, measurements of doors, windows, rooms and any other items are approximate and no responsibility is taken for any error, omission, or mis-statement. This plan is for illustrative purposes only and should be used as such by any prospective purchaser. The services, systems and appliances shown have not been tested and no guarantee as to their operability or efficiency can be given

Made with Metropix ©2016

Viewing by appointment with 1st avenue.

Call: 020 8293 8600

1st avenue, 128 Metcalfe Court, West Parkside, London SE10 0EL
email: info@1stavenue.co.uk

1stavenue
Real Estate Services