



13/4, Wheatfield Street, Edinburgh, EH11 2PB

Light and Beautifully Presented One-Bedroom, First-Floor Flat

Up to date price and viewing info at mov8realestate.com/property

espc rightmove[®] find your happy Zoopla

Property Description

Light and beautifully presented, a one-bedroom, first-floor flat, forming part of a traditional stone-built tenement. Set on a quiet side street, conveniently located in the popular Gorgie area, west of Edinburgh city centre.

Comprises an entrance hall, open-plan living/dining room and kitchen, a double bedroom, a box room, and a bathroom.

Finished in light neutral decor, with a particularly spacious layout, with varnished hardwood flooring throughout. Additional features include a fitted kitchen, a spacious bathroom, double glazing, and gas central heating.

Additionally, the property features a secure entry system, a shared garden to the rear, and unrestricted on-street parking to the front.

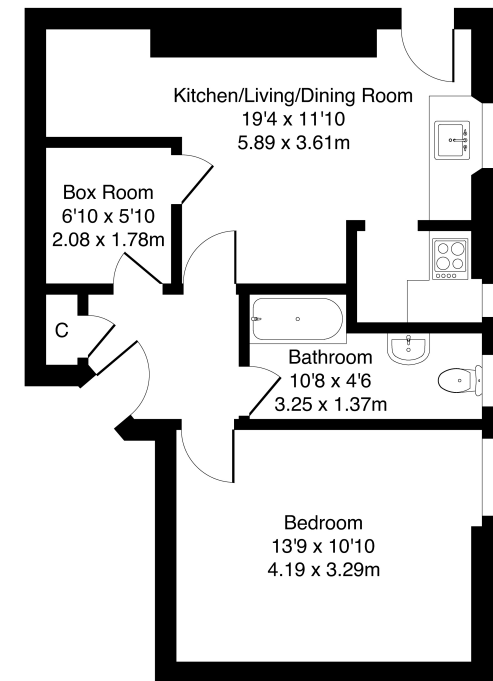
A welcoming entrance provides access to all rooms, creating a convenient and cohesive living space that leads through to an open-plan living room offering a bright and airy feel. The kitchen is finished with a granite-effect countertop and features a stainless-steel sink with a drainer, an integrated oven, a gas hob with a canopy above, and a washing machine.

Off the living room is a useful box room, ideal for additional storage and added convenience. The bedroom is finished with contemporary flooring and benefits from ample natural light flowing through the space. Completing the property is the bathroom, which comprises a three-piece suite with a shower over the bath.



13/4 Wheatfield Street, Edinburgh, EH11 2PB

Approximate Gross Internal Area: (517 sq ft - 48 sq m.)



Legal Disclaimer : Floor-plan and measurements are for illustrative guidance only, and not intended to form part of any contract.

Area Description





Gorgie is a popular and historic district just west of Edinburgh city centre, known for its traditional stone-built tenements. The vibrant Gorgie Road offers extensive local amenities, including a Sainsbury's and Aldi, with a 24-hour ASDA superstore located nearby at Chesser. The area is home to Heart of Midlothian Football Club and offers a variety of leisure

facilities such as Gorgie Farm, Dalry Swimming Pool, Craiglockhart Sports Centre, and Fountain Park, which features a multi-screen cinema, fitness centre, and several restaurants. Frequent bus services run along Gorgie Road, and Haymarket Station, as well as Napier and Heriot-Watt universities and Edinburgh College, are all easily accessible.





Our Services

-  Free pre-sale property valuations
-  Great value fixed estate agency fees
-  Extensive buyer matching database
-  Purchase and sale conveyancing

Contact Us

0345 646 0208

sales@mov8realestate.com

www.mov8.com

Head Office

6 Redheughs Rigg, Edinburgh, EH12 9DQ

Glasgow Office

77 Renfrew Street, Glasgow, G2 3BZ



Estate Agents and Solicitors



These particulars do not form part of any contract and the statements or plans contained herein are not warranted nor are they to scale. All descriptions, dimensions, areas, reference to condition and necessary permissions for use and occupation and other details are given in good faith, and are believed to be correct, but any prospective purchaser should not rely on them as statements or representations of fact, and any prospective purchaser must satisfy themselves by inspection or otherwise as to the correctness of each of them. The Seller shall not be bound to accept the highest or any offer nor to accept a full offer of the Fixed Price where this is applicable. Approximate measurements have been taken by sonic device and measurements are most often taken to the widest point of any room or space. Services and appliances have not been tested for efficiency or safety and no warranty is given as to their compliance with any Regulations. Offers should be made using the Combined Standard Clauses.