

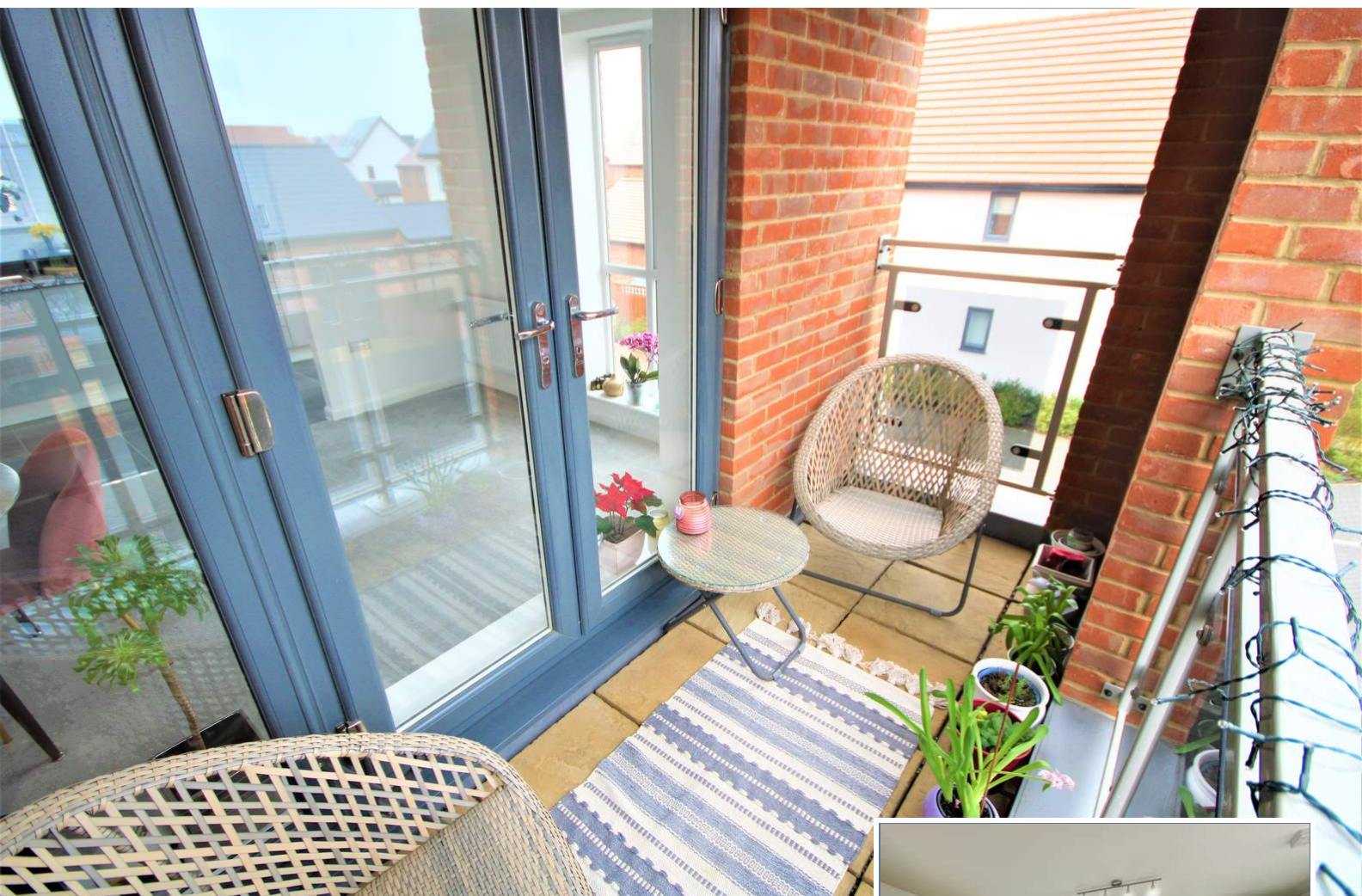


9 Whittle Court,
Knowlhill, Milton Keynes, MK5 8FT

Tel: 01908 231 551



mail@elevationstateagents.com



**Flat 3, 11 Friesland Avenue, Whitehouse,
Milton Keynes, Buckinghamshire, MK8 1DX**

£110,000 Leasehold

- Modern throughout
- Popular development of Whitehouse
- 50 % Shared Ownership
- Big balcony
- Perfect first time buy
- £1,500 for furniture to stay
- Chain free
- £1,500 Fixture & Fittings
- EPC Rating



See our full selection of properties online at www.elevationstateagents.com



This is a lovely one-bedroom first floor apartment located in the popular new development of Whitehouse. The accommodation comprises an entrance hall with open-plan lounge with a balcony, kitchen, good size bedroom, and bathroom. Outside there is allocated parking for one vehicle. The housing association is Paradigm and it is a 50% Shared ownership. Please call the elevation team today to arrange your viewing.

£1,500 fixture and fittings

120 years left on lease

£150 a year for ground rent

£365.20 per month for rent and service charge

Living Room

4.41m x 2.29m (14' 6" x 7' 6")

Kitchen

3.81m x 2.14m (12' 6" x 7' 0")

Bedroom

3.99m x 3.22m (13' 1" x 10' 7")

Disclaimer

Whilst we have endeavoured to prepare our sales particulars accurately none of the services, appliances or equipment have been tested. A buyer should satisfy themselves on such matters prior to purchase. Any measurements or distances mentioned in these particulars are for guide reference only. If such particulars are fundamental to a purchase, buyers should rely on their own enquiries. All enquiries should be directed to Elevation Estate Agents in the first instance.