

South Western Crescent,  
Lower Parkstone, BH14 8RZ

£595,000 Freehold





## Property Summary

A spacious three bedroom detached bungalow in need of complete refurbishment throughout. Occupying a level corner plot with ample gardens, off road parking and attached garage. Pleasantly situated in Lower Parkstone, in close proximity to Whitecliff Harbourside Park.



## Key Features

- Vacant detached bungalow
- Desirable Lower Parkstone location
- Near Whitecliff Harbourside Park
- In need of complete refurbishment
- Three bedrooms
- Spacious lounge/dining room
- Separate kitchen
- Level corner plot
- Garage & off road parking
- Gas central heating



### **About the Property**

Owned and enjoyed by the same family since 1973, this detached bungalow sits at the entry of a quiet residential cul-de-sac in South Western Crescent, Lower Parkstone in close proximity to Whitecliff Harbourside Park.

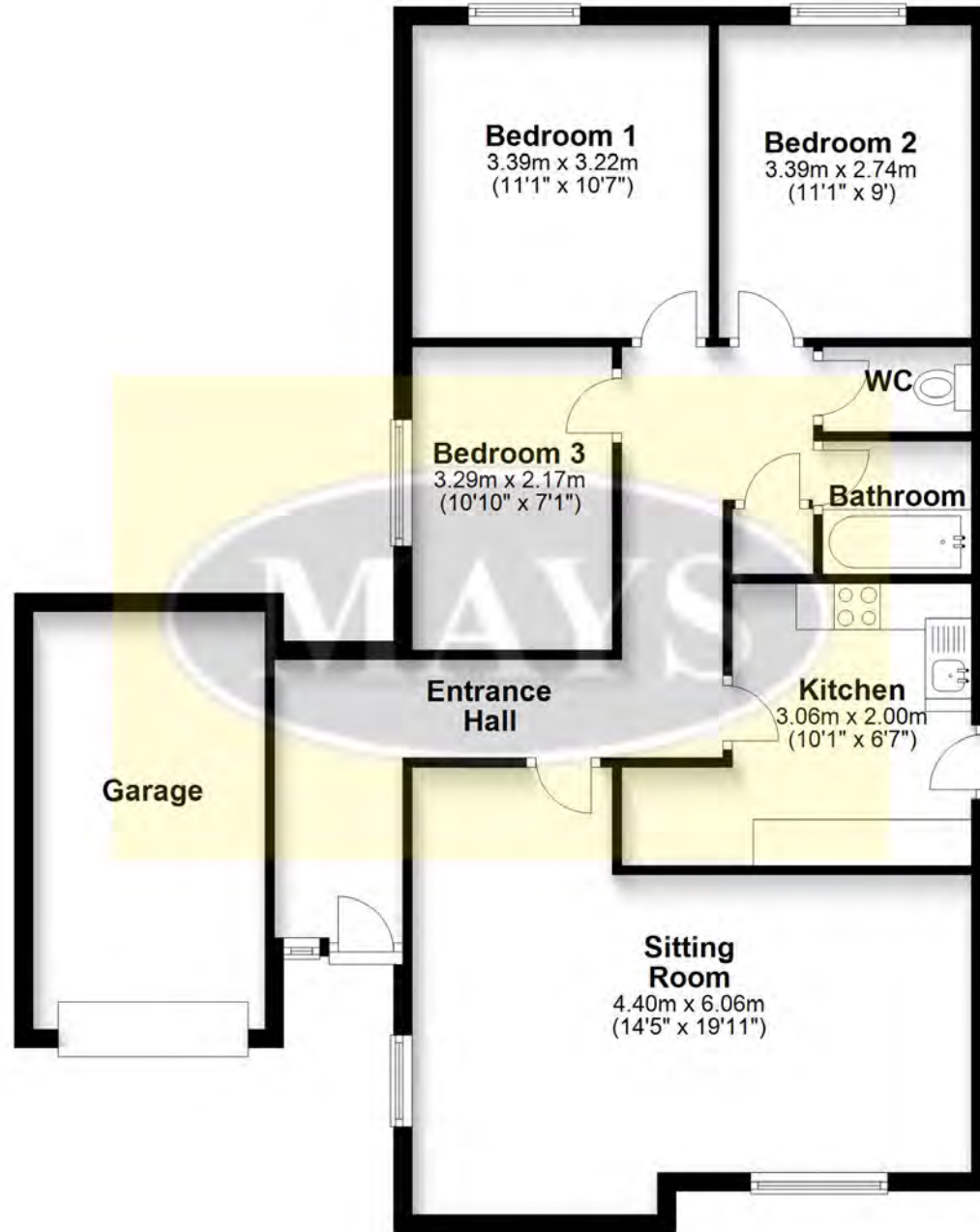
The property occupies a level corner plot and requires full refurbishment throughout.

Accommodation includes three bedrooms, a spacious lounge/dining room, kitchen, bathroom and separate WC. The property also offers generous rear and side gardens and has a garage with off road parking.

Council Tax Band E

## Ground Floor

Approx. 92.9 sq. metres (999.7 sq. feet)



Total area: approx. 92.9 sq. metres (999.7 sq. feet)

Bournemouth Energy Floor Plans are provided for illustration/identification purposes only. Not drawn to scale, unless stated and accept no responsibility for any error, omission or mis-statement. Dimensions shown are to the nearest 7.5 cm / 3 inches. Total approx area shown on the plan may include any external terraces, balconies and other external areas. To find out more about Bournemouth Energy please visit [www.bournemouthenergy.co.uk](http://www.bournemouthenergy.co.uk) (Tel: 01202 556006)

Plan produced using PlanUp.



## About the Location

Lower Parkstone is one of Poole's most sought after locations, situated between Poole and Bournemouth and is a short distance from Ashley Cross, Lilliput and Canford Cliffs village. Close by amenities include schools, doctors' surgeries, restaurants, bars and Parkstone train station, giving mainline access to London Waterloo. The beaches of Sandbanks and Canford Cliffs are a short distance away.

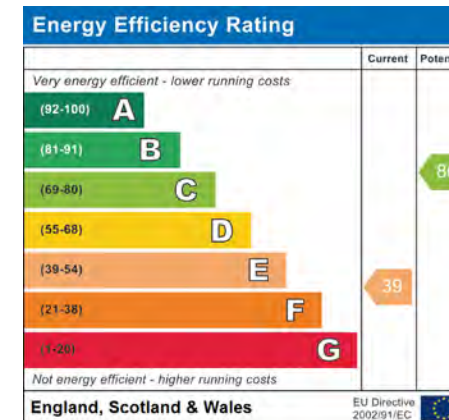
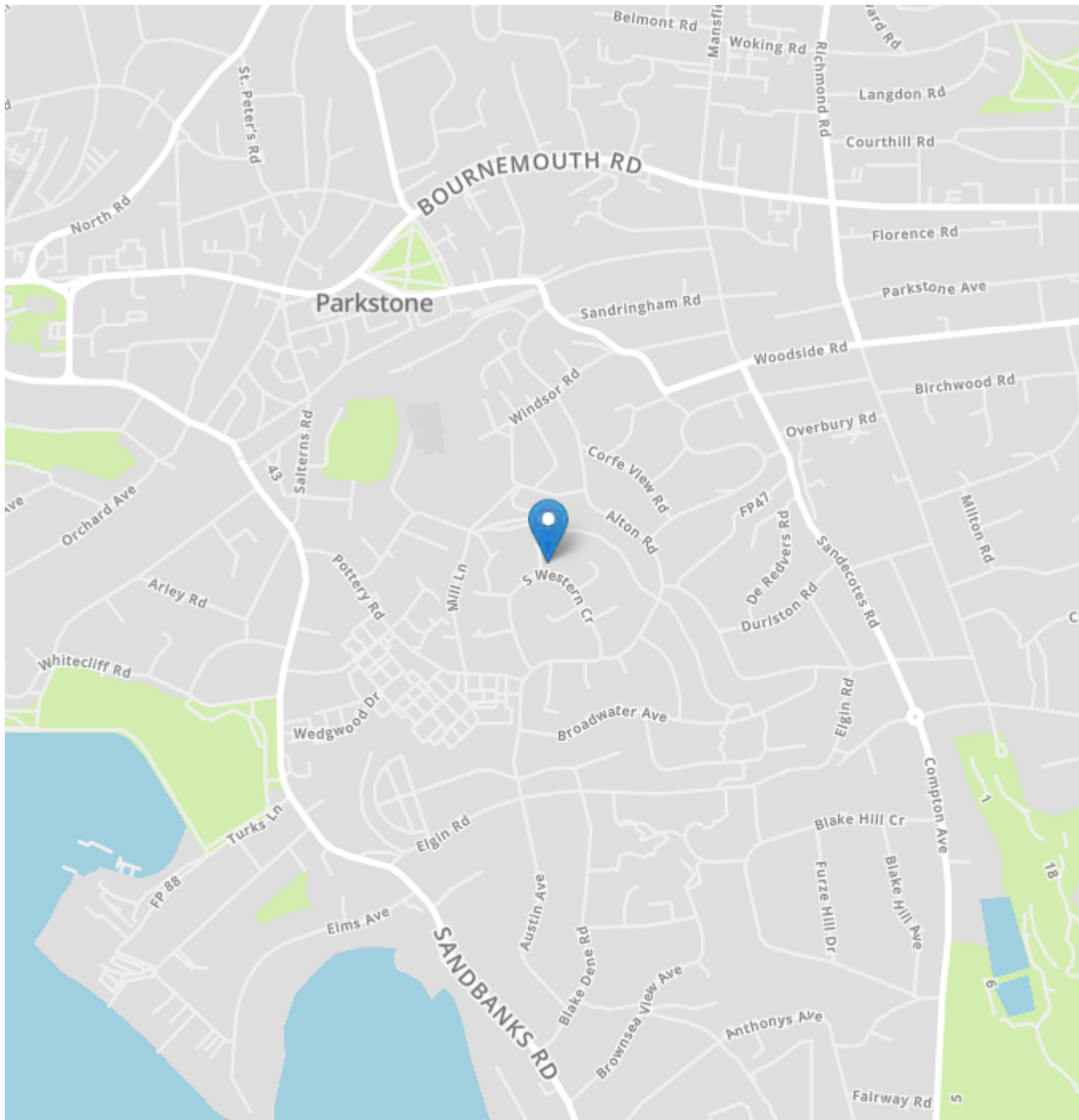


## About Mays

We understand that property is a people business, and pride ourselves on having a diverse and multi-talented team of property professionals.

We have been successfully selling clients homes for more than 25 years, and our wealth of local knowledge combined with experience in both the London market and overseas property, means our team can handle anything that comes their way.

Our reputation is a result of the unsurpassed level of service we offer and importantly the results we achieve for our clients. Our ethos is to 'Bring People and Property Together', after all it's what we've been doing so well for nearly 30 years.



**IMPORTANT NOTICE**

Mays and their clients give notice that:

1. They have no authority to make or give any representations or warranties in relation to the property. These particulars do not form part of any offer or contract and must not be relied upon as statements or representations of fact.
2. Any areas, measurements or distances are approximate. The text, photographs and plans are for guidance only and are not necessarily comprehensive. It should not be assumed that the property has all necessary planning, building regulation or other consents and Mays have not tested any services, equipment or facilities. Purchasers must satisfy themselves by inspection or otherwise.

**New Developments (where applicable)**

Plans and specification are subject to change during the course of construction. All measurements are approximate. The developers reserve the right to alter and amend the information given in these particulars as necessary. Nothing contained herein shall be, or shall be deemed to be, part of any contract. The approximate dimensions quoted indicate the maximum room sizes and are scaled from plans before construction has commenced. They are not intended to be used for carpet sizes, appliance spaces or items of furniture.

**Mays Estate Agents - Lilliput Sales and Head Office**

290 Sandbanks Road, Poole, Dorset BH14 8HX

T: 01202 709888

E: [poole@maysestateagents.com](mailto:poole@maysestateagents.com) (sales)

E: [lettings@maysestateagents.com](mailto:lettings@maysestateagents.com) (lettings)

[www.maysestateagents.com](http://www.maysestateagents.com)

