



34 The Hermitage, Arlesey, Bedfordshire, SG15 6XE

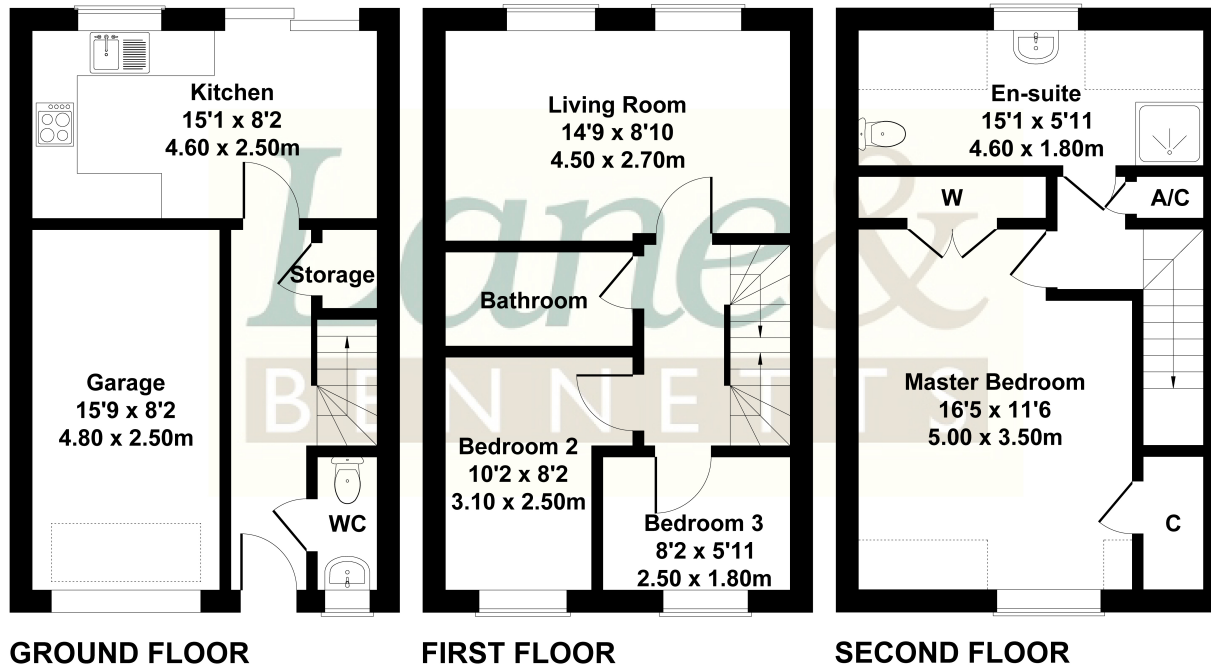
£340,000

THREE BEDROOM townhouse situated in this desirable cul-de-sac ONLY 7/8 MINUTES WALK to the train station and offering over 1000 sq. ft of accommodation including a kitchen with dining area overlooking the garden, first floor living room and occupying the whole of the top floor is the master bedrooms with built in wardrobes and en-suite. Off road parking is provided by a driveway and garage (which has potential for a conversion if required) and there is an enclosed rear garden with small patio area. END OF CHAIN SITUATION.

Lane &
BENNETTS

34 The Hermitage, Arlesey

Approximate Gross Internal Area
1109 sq ft - 103 sq m



Not to Scale. Produced by The Plan Portal 2025
For Illustrative Purposes Only.

- 3 BEDROOM HOUSE OVER 1,000 SQ FT OF ACCOMODATION
- DESIRABLE CUL DE SAC LOCATION
- 7/8 MINUTES WALK OF THE TRAIN STATION
- EAT IN KITCHEN WITH DOORS TO GARDEN
- GENEROUS LIVING ROOM
- MASTER BEDROOM WITH BUILT IN WARDOBES + EN-SUITE
- LUXURY BATHROOM
- GARAGE & PARKING
- COUNCIL TAX BAND D / EPC C

