



**Marsham Close
Newcastle upon Tyne
Tyne and Wear
NE15 7QL**

Offers In Excess Of £87,000

bettermove

Marsham Close Newcastle upon Tyne

Bettermove are proud to present this 1 bedroom bungalow in Newcastle available with no forward chain.

The property benefits from double glazing, electric heating throughout and has off street parking available.

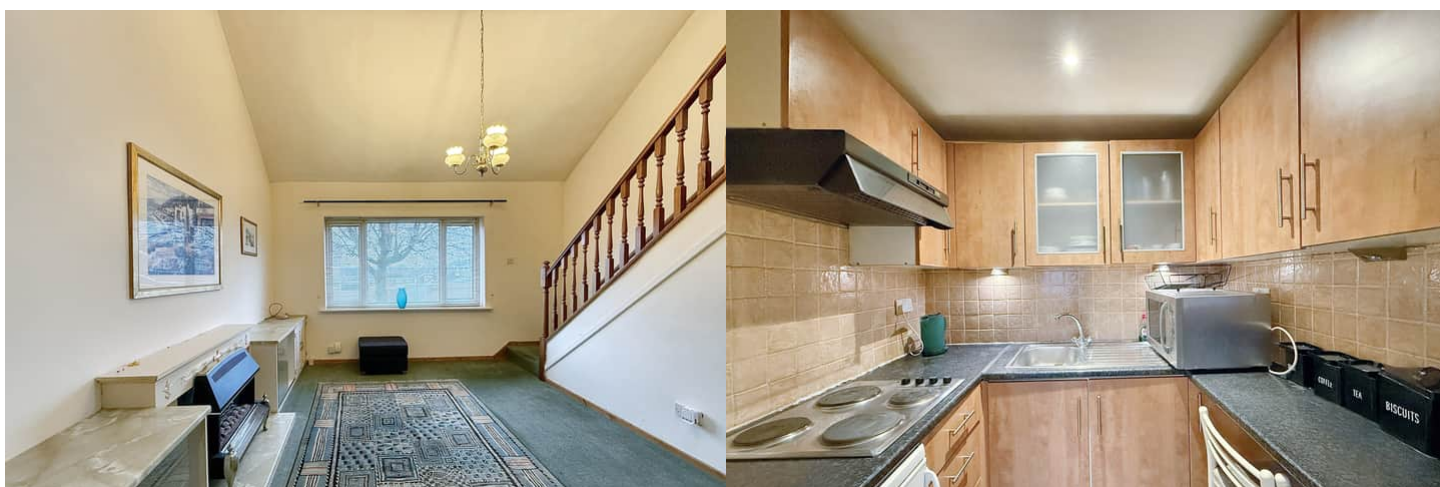
The council tax band is A.

This is a leasehold property with 999 years on the lease from 1969; the ground rent is tbc and the service charge is tbc.

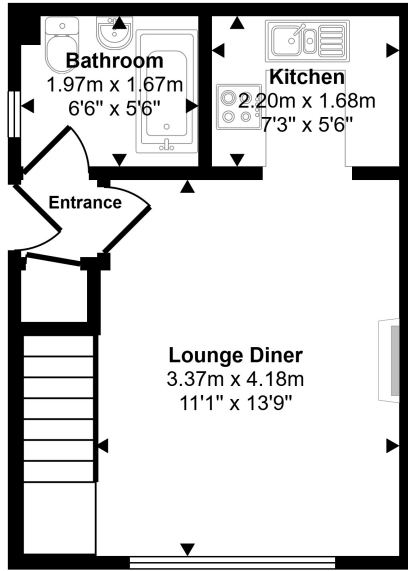
The interior of this beautifully presented property comprises a spacious living room, fitted kitchen, 1 bedroom and the bathroom. The exterior boasts a garden, perfect for enjoying the summer months.

Located in Newcastle, the property is close to a range of amenities, including shops, supermarkets, restaurants and pubs. Excellent transport connections can be found from the A1, A69 and local bus routes.

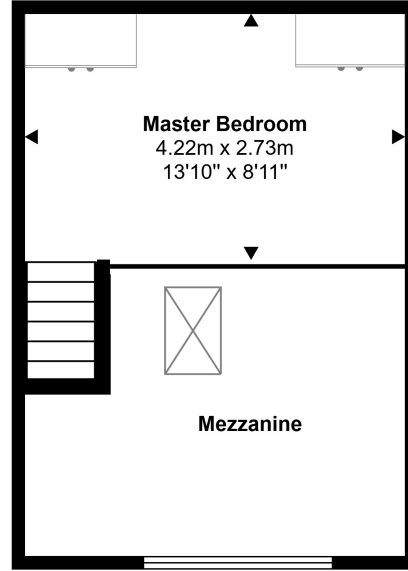
This exciting opportunity should not be missed! All enquiries can be made through Bettermove on 0330 004 0050.



Approx Gross Internal Area
51 sq m / 553 sq ft




Ground Floor
Approx 26 sq m / 276 sq ft



First Floor
Approx 26 sq m / 277 sq ft

Whilst every attempt has been made to ensure the accuracy of the floor plan contained here, measurements of doors, windows, rooms and any other items are approximate and no responsibility is taken for any error, omission, or mis-statement. The measurements should not be relied upon for valuation, transaction and/or funding purposes. This plan is for illustrative purposes only and should be used as such by any prospective purchaser or tenant.

Energy Efficiency Rating		Current	Potential
<i>Very energy efficient - lower running costs</i>			
(92+)	A		
(81-91)	B		89
(69-80)	C		
(55-68)	D		
(39-54)	E		
(21-38)	F	36	
(1-20)	G		
<i>Not energy efficient - higher running costs</i>			
England, Scotland & Wales		EU Directive 2002/91/EC 	



20-22 Bridge End, Leeds, LS1 4DJ
t: 0330 004 0050 e: hello@bettermove.co.uk
www.bettermove.co.uk