

FOR SALE

Samels Court,
Hammersmith, W6

Flat
Riverside

£450,000 sh of fh

2  1  1 

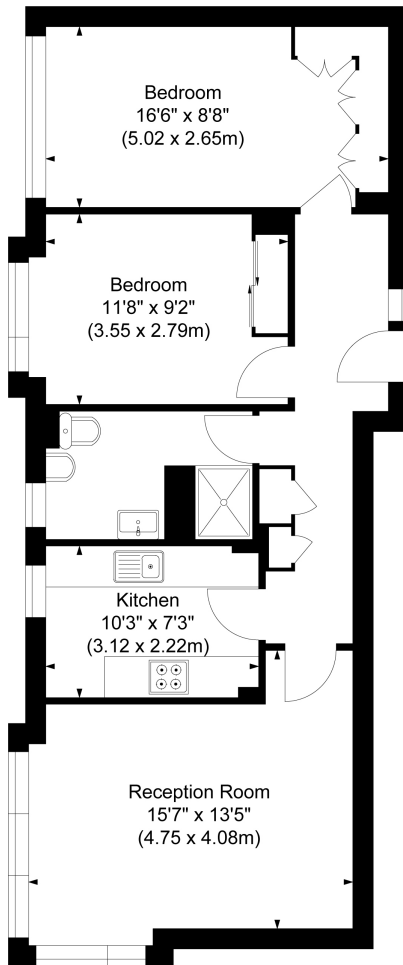


**horton
andgarton**

SALES / LETTINGS / PROPERTY MANAGEMENT

hortonandgarton.co.uk | Sales 020 8819 0510 | Lettings 020 8819 0511
172 King Street, Hammersmith, W6 0QU





FIRST FLOOR



SAMELS COURT,
 APPROXIMATE GROSS INTERNAL AREA
689 Sq' / 64.03 SqM

Not to scale, for guidance only and must not be relied upon as a statement of fact.
 All measurements and areas are approximate only



Purpose built apartment | Off-street parking | 689 Sq' - 64 SqM | EPC rating C | Two bedrooms - One bathroom | Riverside



hortonandgarton.co.uk
 Sales 020 8819 0510
 Lettings 020 8819 0511

172 King Street, Hammersmith, W6 0QU