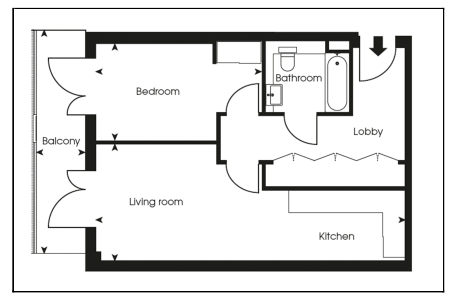
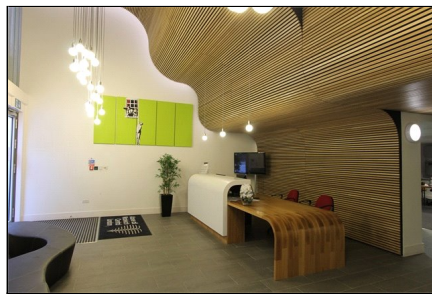
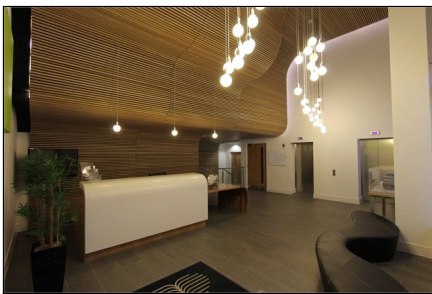


# 1st avenue

SALES | LETTINGS | PROPERTY MANAGEMENT



Harper Studios, 20 Love Lane, London, SE18 6GW

£1,200.00 Per month

*A modern and newly built one bed apartment located in the popular Woolwich Central development. The apartment is offered furnished and boasts 24 hour concierge and on site Tesco's. Situated just moments from the DLR and mainline train services, offering easy access to Canary Wharf, the City and beyond.*

Unit 6, 128 Metcalfe Court, West Parkside, London, SE10 0EL 020 8293 8600 [www.1stavenue.co.uk](http://www.1stavenue.co.uk)

Viewing by appointment with 1st Avenue  
Tel: 020 8293 8600- Email: [info@1stavenue.co.uk](mailto:info@1stavenue.co.uk)

These particulars are intended to give a fair and substantially correct overall description for the guidance of intending purchasers and do not constitute an offer or part of a contract. Prospective purchasers and/or lessees ought to seek their own professional advice.

All descriptions, dimensions, areas, references to condition and necessary permissions for use and occupation and other details are given in good faith and are believed to be correct, but any intending purchasers should not rely on them as statements or representations of fact, but must satisfy themselves by inspection or otherwise as to the correctness of each of them.

All measurements are approximate.