



**Ochrewell Avenue
Huddersfield
West Yorkshire
HD2 1LN**

Offers in Excess of £132,000

bettermove

Ochrewell Avenue

Huddersfield

Bettermove are proud to present this 2 bedroom Semi-Detached Bungalow in Huddersfield available with no forward chain.

The property benefits from double glazing, gas central heating throughout and has ample on street parking available nearby. The council tax band is B.

This is a leasehold property with 937 years remaining on the lease; the ground rent is £6 per annum and there are no service charges.

The interior of this well presented property comprises a spacious living room, the fitted kitchen, two double bedrooms and the bathroom. There is ample storage space throughout the property and large boarded loft area. The exterior boasts a private low maintenance garden, perfect for enjoying the summer months.

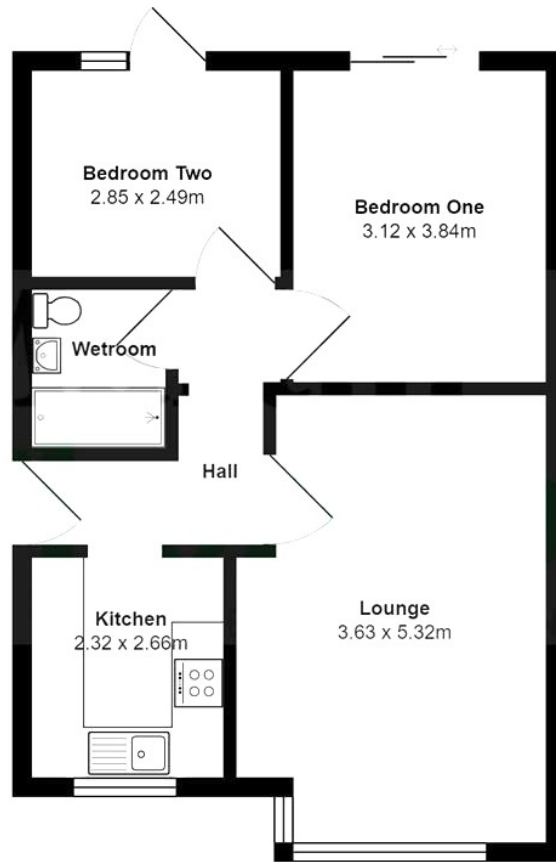
Located in the popular town of Huddersfield, the property is close to a range of amenities, including shops, supermarkets, restaurants and pubs. Excellent transport connections can be found from Deighton Train Station, the M62 and many local bus routes.

This exciting opportunity should not be missed! All enquiries can be made through Bettermove on 0330 004 0050.

You can secure the purchase immediately by paying an exclusivity deposit of £1,000.

This is not an additional fee and is returned to you on completion.





All measurements are approximate and for display purposes only

Energy Efficiency Rating		
	Current	Potential
<i>Very energy efficient - lower running costs</i>		
(92+) A		
(81-91) B		87
(69-80) C		
(55-68) D	67	
(39-54) E		
(21-38) F		
(1-20) G		
<i>Not energy efficient - higher running costs</i>		
England, Scotland & Wales	EU Directive 2002/91/EC	



20-22 Bridge End, Leeds, LS1 4DJ
t: 0330 004 0050 e: hello@bettermove.co.uk
www.bettermove.co.uk