

Linden Close, Sticklepath, Barnstaple

£750 pcm

John
Smale & Co.

Chartered Surveyors | Residential & Commercial Consultants



- Two bedroom Detached Bungalow
- Garage
- Gas C/G and Double glazing throughout.
- Available Now. Long Let
- Front and Rear Gardens
- Conservatory
- Rent - £750 - Deposit £865

12 Linden Close, Sticklepath, Barnstaple, Devon, EX31 2HD

A two bedroom detached bungalow close to the amenities and local primary school.

Ground Floor

Entrance

Front door into Lobby.
inner front Door.

Lounge

3.93m x 4.26m (12' 11" x 14' 0")

Kitchen

3.29m x 3.91m (10' 10" x 12' 10")

Fully fitted modern kitchen.
Gas hob and single oven.

Bathroom

2.24m x 2.09m (7' 4" x 6' 10") 2.24m x 2.09m (7' 4" x 6' 10")

Bath with shower over, W.C and sink.

Bedroom One

3.37m x 3.93m (11' 1" x 12' 11")

With fitted wardrobes.

Bedroom Two

3.01m x 3.33m (9' 11" x 10' 11")

Garden

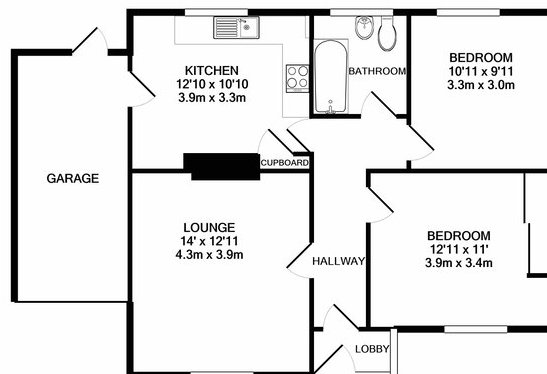
Single garage. Front garden with off road parking.
Rear enclosed garden with patio area and lawned area.

Services

Mains Connected, gas, electric and water.

Directions

Heading towards Bickington on A3126 past some shops on your left, just before Woodville turning, turn left onto Linden Close, the property is around the corner on the right.



TOTAL APPROX. FLOOR AREA 840 SQ.FT. (78.1 SQ.M.)
Made with Metropix ©2020

At John Smale & Co we don't just sell houses! ...

Contact us now for information on all of our other services including Residential and Commercial Lettings, Property Management, Commercial Property Sales, Probate Valuations, Independent Financial Advice, Energy Performance Certificates, Auctions and New Homes.

These particulars have been prepared for guidance only. We have not carried out a detailed survey, not tested the services, appliances or specific fittings. Floor plans are not drawn to scale unless stated, measurements and distances are approximate only. Do not rely on them for carpets and furnishings. Photographs are not necessarily current and you should not assume that contents shown are included in the sale.

Email: lettings@johnsmale.com Website: www.johnsmale.com

5 Cross Street Barnstaple EX31 1BA

Offices also @ London (Mayfair Office)

Tel: 01271 329345