



54 King Orry Road, Glen Vine, Isle of Man . IM4 4FJ

Superb detached family home with multiple reception rooms, two en suite bedrooms and a private South facing garden.



£685,000 Freehold

PROPERTY DESCRIPTION

54 King Orry Road in Glen Vine is a fantastic family home situated in a desirable location.

On entering the property you are greeted by a spacious entrance hallway with understairs cloakroom for convenience.

There are two large reception rooms either side of the hallway, ideal for families and those who require multiple reception areas, the lounge is complimented by a recently fitted multi fuel burner and opens into the Kitchen/Diner. The Kitchen itself stretches to 30ft and features stylish B&B cabinets with black granite worktops, there is space for a 6-8 seater dining table and a contemporary media wall with illuminated recessed shelving. Alongside the kitchen is a large utility room with matching cabinets and worktops, it also provides access to the integral garage.

Upstairs are four spacious bedrooms, two of which are complimented by modern en suite bathrooms plus a family bathroom and built in airing cupboard. The bedrooms offer plenty of space for a family and the en suite bathrooms provide a nice privacy aspect for homeowners.

To the front of the property is a large driveway providing off road parking for several vehicles. To the rear is a generous and private South facing garden with patio, a great space for entertaining and soaking up the sun on a nice day.

FEATURES

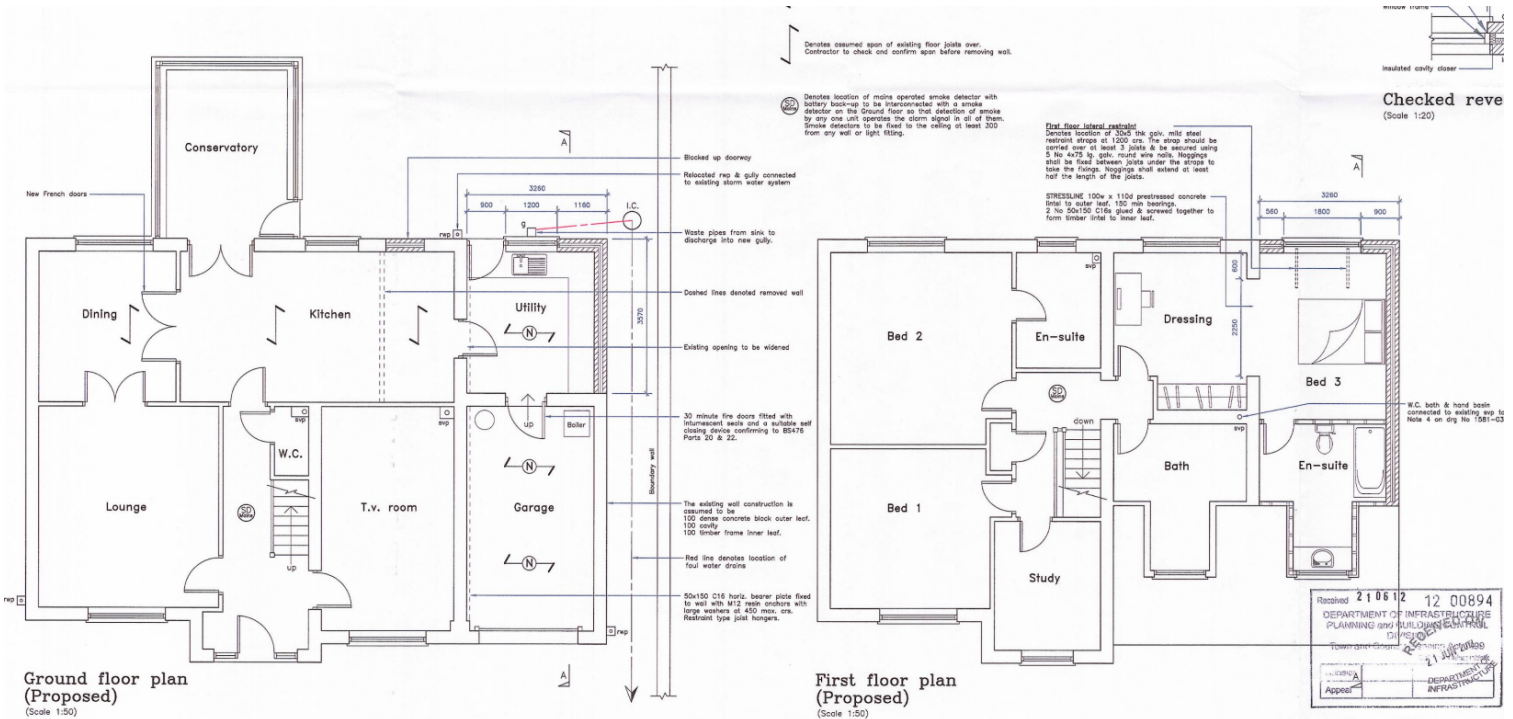
- Detached Family Home
- Desirable Residential Location
- Close to Marown Primary School
- Large Lounge with Log Burner
- 30ft Kitchen/Diner with Media Wall
- Utility Room plus Garage
- 4 Double Bedrooms (2 En-Suite) plus Bathroom
- Private South Facing Garden



Property Images



FLOORPLAN



DISCLAIMER: Whilst Manxmove Ltd believe that these details are correct, neither Manxmove Ltd or their clients guarantee their accuracy in any way. Consequently, these details are not to be used to form part of any legally binding contract. Prospective purchasers or tenants are advised to visit this property to satisfy themselves as to the correctness of these details. Please note, we use wide angle camera lenses in order to show as much of each room as possible. This is not intended to mislead any prospective purchasers or tenants in any way and an honest verbal description is always available prior to viewing if required.