



Holly Court, Greenroof Way, Greenwich, SE10 0BP

£1,750 PCM

An impressive and spacious two bedroomed first floor apartment offering chic and stylish living space. The property further comprises fully fitted kitchen, generous double bedrooms, master, en-suite, sun drenched balcony and 24 hour concierge. Offered furnished with secured parking for one car. AVAILABLE 23rd JULY 2018.

Viewing by appointment with 1st avenue.

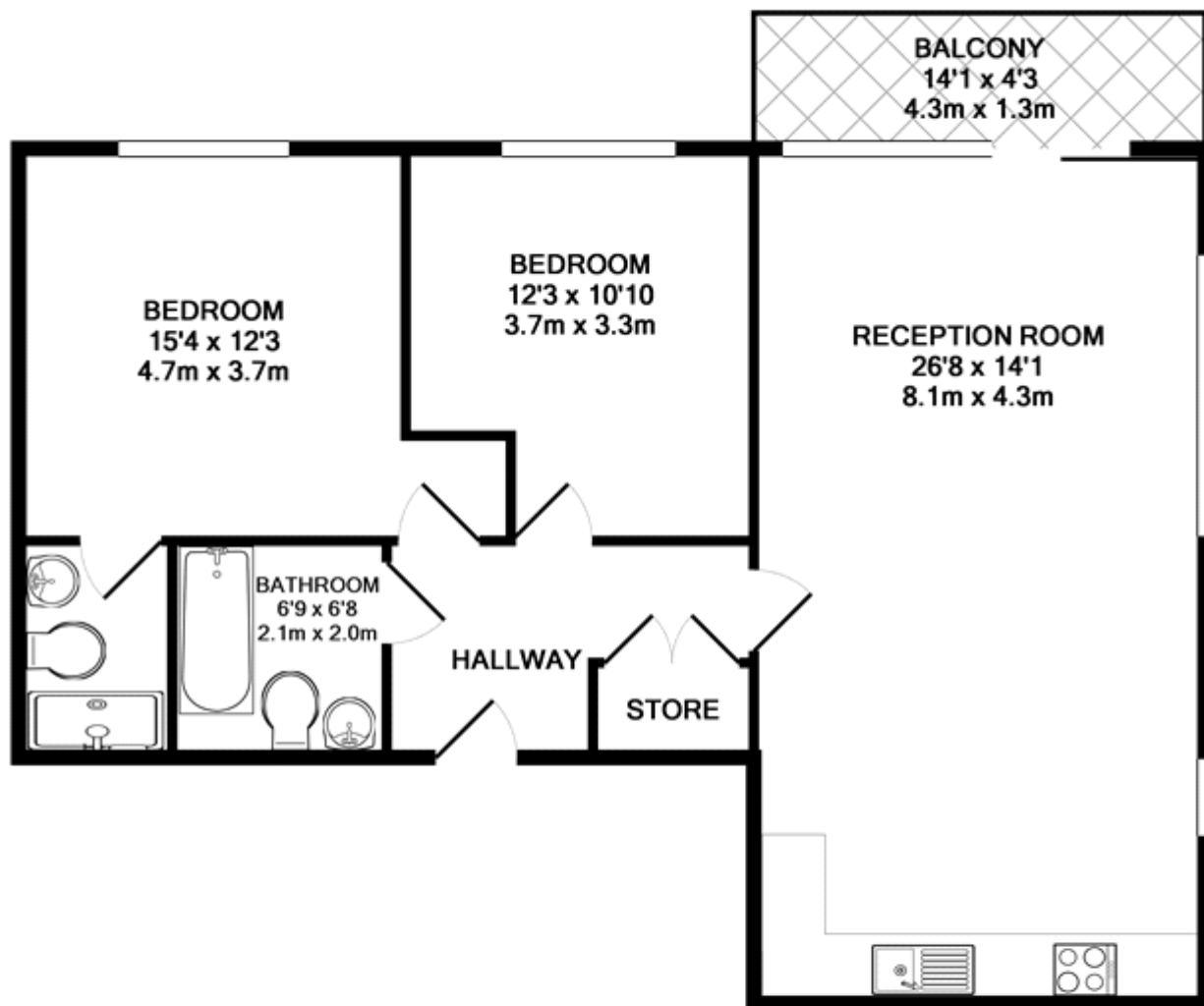
Call: 020 8293 8600

1st avenue, 128 Metcalfe Court, West Parkside, London SE10 0EL
email: info@1stavenue.co.uk

Holly Court, Greenroof Way, Greenwich, SE10 0BP

£1,750 PCM

1stavenue
Real Estate Services



TOTAL APPROX. FLOOR AREA 811 SQ.FT. (75.3 SQ.M.)

Whilst every attempt has been made to ensure the accuracy of the floor plan contained here, measurements of doors, windows, rooms and any other items are approximate and no responsibility is taken for any error, omission, or mis-statement. This plan is for illustrative purposes only and should be used as such by any prospective purchaser. The services, systems and appliances shown have not been tested and no guarantee as to their operability or efficiency can be given

Made with Metropix ©2016

Viewing by appointment with 1st avenue.

Call: 020 8293 8600

1st avenue, 128 Metcalfe Court, West Parkside, London SE10 0EL
email: info@1stavenue.co.uk

1stavenue
Real Estate Services