



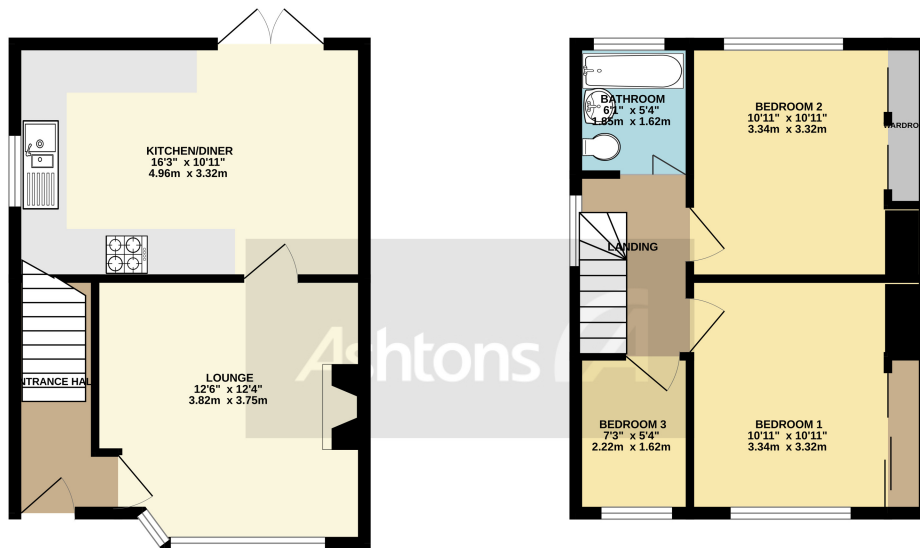
144 Thelwall Lane, Warrington, Cheshire. WA4 1LU

£230,000



CORNER PLOT LOCATION | THREE BEDROOMS | THREE PIECE BATHROOM SUITE |
GREAT EXTERNAL SPACE | DINING KITCHEN | HANDY FOR LATCHFORD VILLAGE |
OFF ROAD PARKING |





TOTAL FLOOR AREA: 723 sq.ft. (67.1 sq.m.) approx.
 Whilst every attempt has been made to ensure the accuracy of the floorplan contained here, measurements of doors, windows, rooms and any other items are approximate and no responsibility is taken for any error, omission or mis-statement. This plan is for illustrative purposes only and should be used as such by any prospective purchaser. The services, systems and appliances shown have not been tested and no guarantee as to their operability or efficiency can be given.
 Made with Metropix ©2023

Situated on this famous road in Latchford is this well-presented home. The property has been loved for many years by the current owners. The property benefits from having three bedrooms, a corner plot position with off-road parking, and a well-appointed dining kitchen.

Internally there is an entrance hallway, a lounge with a pleasant feel and feature fireplace, understairs storage cupboard. The Kitchen / Dining room is a generous space with an ample amount of storage and integrated appliances. Further, there are French doors giving access to the fantastic garden which offers an abundance of space for relaxing in the garden and providing gated off-road parking.



Contact your local office to arrange a viewing:

- Padgate:** 01925 479334
- Great Sankey:** 01925 454300
- Winwick:** 01925 232146
- Stockton Heath:** 01925 453400
- St.Helens:** 01744 754120
- Wigan:** 01942 498862
- Culcheth:** 01925 764744
- Ashton-In-Makerfield:** 01942 364446
- Newton-Le-Willows:** 01925 907770
- Commercial Office:** 01925 907709
- Lettings Head Office:** 01925 873533
- Financial Services:** 01925 221234

Viewing Arrangements

Viewing is strictly by appointment only through Ashtons Estate Agency.

Disclaimer Property Details

These particulars, whilst being believed to be accurate are set out as a general outline only for guidance and do not constitute any part of an offer or contract. Intending purchasers should not rely on them as statements of representation of fact, but must satisfy themselves by inspection or otherwise as to their accuracy. We have not carried out a detailed survey nor tested the services, appliances and specific furnishings. The measurements given are approximate. No person in this firm's employment has the authority to make or give any representation or warranty in respect of the property.

All details, photographs and floorplans are the copyright of Ashtons Estate Agency.



How much you can borrow?
 Speak to a mortgage expert in your local office.

Ashtons Financial Services