

Mosquito End, Haywood Village Weston-Super-Mare, Somerset.

BS24 8FB

£220,000 Freehold

FOR SALE



www.housefox.co.uk



01934 314242
01275 404601
01278 557700
sales@housefox.co.uk

PROPERTY DESCRIPTION

HOUSE FOX ESTATE AGENTS PRESENTS.... a charming semi-detached house nestled within the sought-after Haywood Village development.

This inviting residence features a welcoming hallway, leading to a delightful open-plan kitchen seamlessly integrated with the lounge. Double doors from the lounge graciously open onto the garden, creating a seamless connection between indoor and outdoor living spaces. The property further encompasses two bedrooms, a well-appointed bathroom, gas central heating, and double glazing for enhanced comfort.

Completing the picture is an enclosed garden, offering a private and tranquil outdoor retreat, as well as off-street parking for added convenience.

Discover modern living in this well-presented semi-detached house, thoughtfully designed for comfort and style.

FEATURES

- Semi-detached house
- 2 bedrooms
- Open plan kitchen to lounge
- Double glazed windows
- Gas central heating
- Off street parking
- Sellers have found
- Cloakroom'laundry room
- EPC-B



ROOM DESCRIPTIONS

Main front door to hallway

Hallway:

Stairs to the first floor, door to the kitchen/living room, radiator

Living room/kitchen;

22' 1" x 12' 2" (6.73m x 3.71m) KITCHEN AREA: Sink unit, floor and wall units, built in oven and hob, plumbing for dishwasher, breakfast bar.....LIVING ROOM AREA: Radiator, door to the laundry room/cloakroom, double doors to the garden

Laundry room/Cloakroom:

This was originally the cloakroom, but the current sellers use it as a laundry room, and have removed the toilet, and use it for the washing machine. Wash hand basin

First floor landing:

Doors to the bedrooms and bathroom

Bedroom 1:

12' 1" x 7' 7" (3.68m x 2.31m) Radiator, double glazed window, cupboard

Bedroom 2:

11' 10" x 7' 8" (3.61m x 2.34m) Radiator, double glazed window

Bathroom:

Bath, wash hand basin, radiator, shower screen, low level WC

Parking:

2 parking spaces to the front of the house

Garden:

Patio area, lawn area, enclosed by fencing



RESIDENTIAL ESTATE
AGENT OF THE YEAR

PRESTIGE
AWARDS

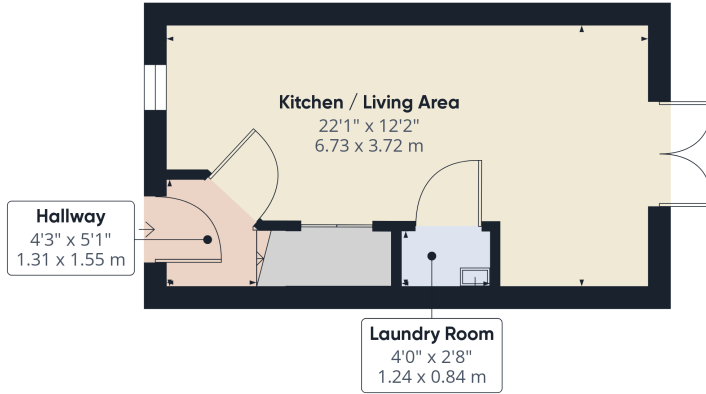
2023/2024

SOUTH WEST
ENGLAND

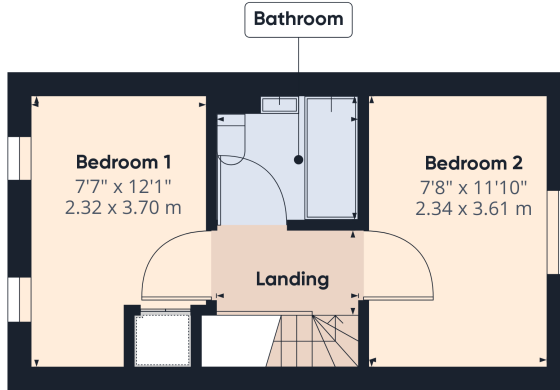
WINNER

 **HOUSEFOX**
ESTATE AGENTS

FLOORPLAN & EPC



Floor 0



Floor 1

Approximate total area¹⁾
500.99 ft²
46.54 m²

Excluding balconies and terraces

While every attempt has been made to ensure accuracy, all measurements are approximate, not to scale. This floor plan is for illustrative purposes only.

GIRAFFE360

