



9 Whittle Court,
Knowlhill, Milton Keynes, MK5 8FT

Tel: 01908 231 551



mail@elevationstateagents.com

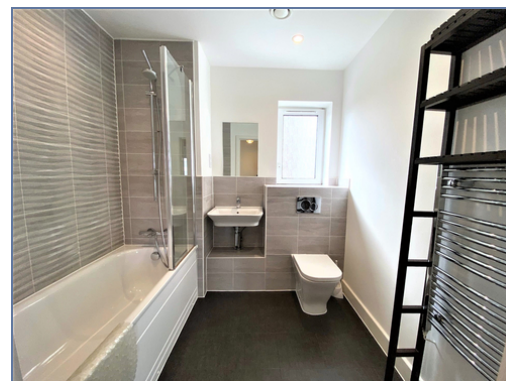


**Flat 15, 14 Eniac View, Atlas Way,
Oakgrove, Milton Keynes,
Buckinghamshire, MK10 9SP**

£260,000 Leasehold

- Large open plan living area
- Private balcony overlooking greenery
- Two double bedrooms
- En suite & fitted wardrobes to master bedroom
- High specification finishing
- Lift access
- Sought after area
- Outstanding school catchment
- 243 years remaining on the lease
- Can rent out for £1,450-£1,500 PCM
- EPC Rating B

See our full selection of properties online at www.elevationstateagents.com





Living/Dining Room

4.86m x 3.57m (15' 11" x 11' 9")

Kitchen

3.25m x 2.38m (10' 8" x 7' 10")

Bedroom one

3.65m x 3.28m (12' 0" x 10' 9")

Bedroom two

3.51m x 3.24m (11' 6" x 10' 8")

Disclaimer

Whilst we have endeavoured to prepare our sales particulars accurately none of the services, appliances or equipment have been tested. A buyer should satisfy themselves on such matters prior to purchase. Any measurements or distances mentioned in these particulars are for guide reference only. If such particulars are fundamental to a purchase, buyers should rely on their own enquiries. All enquiries should be directed to Elevation Estate Agents in the first instance.

