



Three bed detached chalet bungalow with sea views EPC tbc
Bury Lodge, Old Lyme Hill, Charmouth, Bridport, Dorset DT6 6BP

FORTNAM
SMITH & BANWELL

in brief...

Detached 3 Bedroom chalet bungalow
Development/modernisation potential
Ground Floor bedroom with en suite
Sea & coastal/inland birds eye views
Rear gardens overlooking coast

Elevated position on the hill overlooking Golden
Cap
Two first floor bedrooms
Double glazing & gas central heating
No forward chain

*Ideal coastal
refurbishment
property in good
location*



in more detail...

Situated in a sought after elevated position on the western edge of coastal Charmouth Bury Lodge offers a lovely 3 bedroom home now requiring a degree of gentle updating. Built originally in 1972 this is one of the few remaining unaltered original properties in the nearby roads. With delightful sea and coastal views spanning inland across the Marshwood Vale, visible from all the side and rear view windows and the garden, the property is approached via a gently sloped driveway to a wide parking area and side detached single garage.

Steps up to front door. Access pathways to rear on both sides. Entrance Hall L shaped with stairs to right. Tall hall cupboards. Large L-shaped triple aspect Living Room spans front to back with a fireplace and large windows with great coastal views. Sliding doors to a wide Garden Room with coastal views and two external doors out to the garden.

Fitted galley Kitchen to rear with wide window to rear to garden & coast. Space for appliances. External end door to garden.

Bedroom 1 double with en-suite shower/WC on the Ground Floor, to front of property.

Stairs to first floor. Small landing with airing cupboard housing modern Ideal combi boiler. Central Bathroom with coloured suite comprising bath, basin & WC. Two further double dormer bedrooms at each end with great coastal views. Eaves storage cupboards.

Outside to one side is a large paved side patio terrace leading round to the rear garden. Mainly lawn with mature planting &

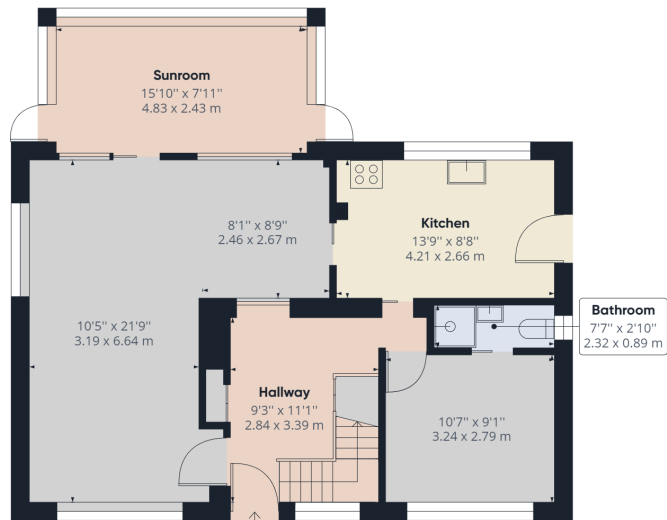


shrubs to the borders. A flight of garden steps leads down the bank from the level area to the road below Old Lyme Road with a gate at the end.

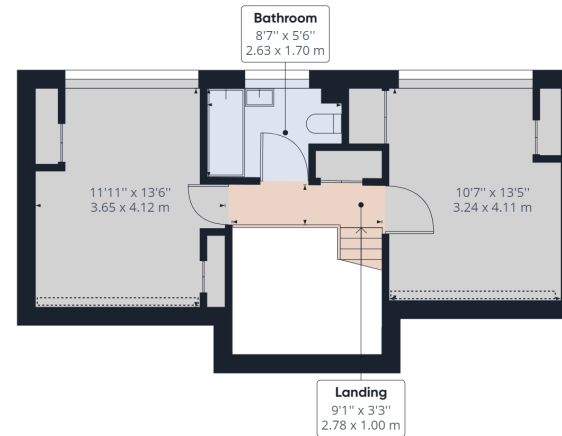
All mains services. No forward chain. EPC tba. Dorset Band E. Property Ref :DFH1061

Directions: From the traffic lights in village centre proceed uphill taking the last turning on the left into Old Lyme Hill (note not the lower fork Old Lyme Road) Bury Lodge is the second property on the right side. Charmouth offers a welcoming friendly coastal community with good local shops and amenities. Primary School with links to The Woodroffe & Colyton Grammar. Famous Jurassic Beach & Southwest Coastal Path on the doorstep. Easy access to nearby Lyme Regis, Bridport & Axminster. Main rail London Waterloo-Exeter Axminster. See www.charmouth.org for more village info.

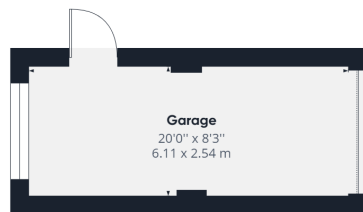
the location...



Ground Floor Building 1



Floor 1 Building 1



Ground Floor Building 2

Approximate total area⁽¹⁾

1377.51 ft²

127.97 m²

Reduced headroom

11.67 ft²

1.08 m²

(1) Excluding balconies and terraces

⌋ Reduced headroom
(below 1.5m/4.92ft)

While every attempt has been made to ensure accuracy, all measurements are approximate, not to scale. This floor plan is for illustrative purposes only.

GIRAFFE360