



## Old Hale Way

Old Hale Way | Hitchin | Hertfordshire | SG5 1XH

[www.stonegate-estates.co.uk](http://www.stonegate-estates.co.uk)



# OLD HALE WAY

## Property Description

Step inside this impressive extended family home in a sought-after residential location in Hitchin. This semi-detached house offers versatile and flexible accommodation, perfect for growing families. With five bedrooms, two bathrooms, and two en-suites in total there is plenty of space for everyone.

The property boasts two reception rooms, a good size kitchen/breakfast room, cloakroom and a ground floor bedroom with en-suite. On the first floor there are three bedrooms and a family bathroom. On the second floor there is a double bedroom with en-suite. The detached annexe is an independent space for entertaining, relaxation, or living and benefits from a shower room and separate WC. Outside the rear garden is fully enclosed and mainly laid to lawn with ample off road parking to the front on the driveway for three cars.

Located in a very popular and sought-after area, this home provides good access to the train station for those commuting to London Kings Cross or Cambridge. The town centre is just a short distance away, where you'll find excellent schools such as Hitchin Girls' School and Hitchin Boys' School.

Families will appreciate the vibrant atmosphere of Hitchin, with its bustling town centre and proximity to major road networks like the A1/M1. Grocery shopping is a breeze with a Sainsburys supermarket just a stone's throw away.

Don't miss the opportunity to view this property in good order. Arrange a viewing today and discover the perfect family home in a location that offers convenience, charm, and a welcoming community.

**£975,000 Freehold**





Approximate Gross Internal Area  
 Ground Floor = 83.6 sq m / 900 sq ft  
 First Floor = 44.4 sq m / 478 sq ft  
 Second Floor / Loft Conversion = 24.9 sq m / 268 sq ft  
 Annexe = 22.2 sq m / 239 sq ft  
 Total = 175.1 sq m / 1,885 sq ft

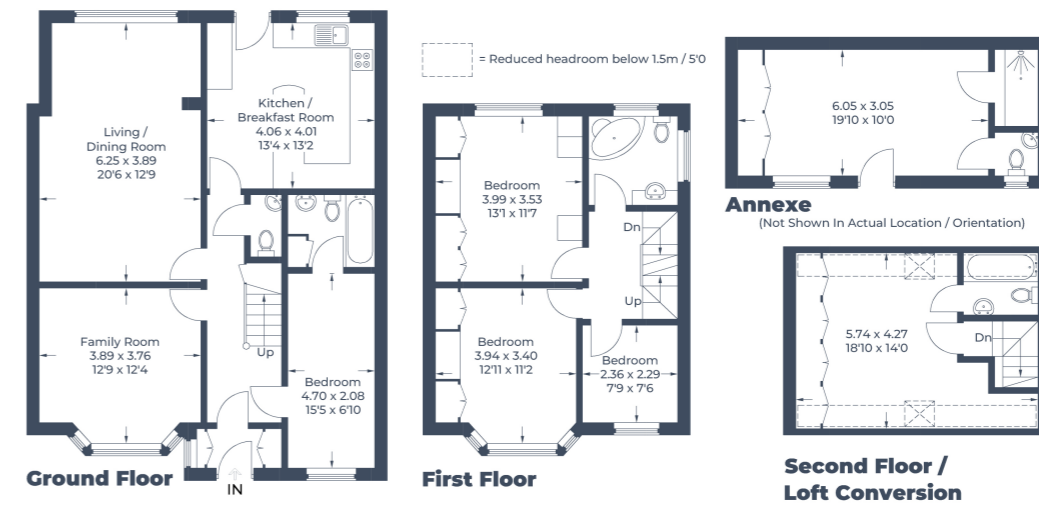


Illustration for identification purposes only,  
 measurements are approximate, not to scale.  
 © CJ Property Marketing Produced for Stonegates Estates



EPC Rating: D

## Stonegate Estate Agents

01462 438979

[sales@stonegate-estates.co.uk](mailto:sales@stonegate-estates.co.uk) | [www.stonegate-estates.co.uk](http://www.stonegate-estates.co.uk)

