



Hazel Cottage  
Littlehempston  
Totnes  
Devon  
TQ9 6NE

Offers in Excess of £190,000

bettermove 



## Totnes

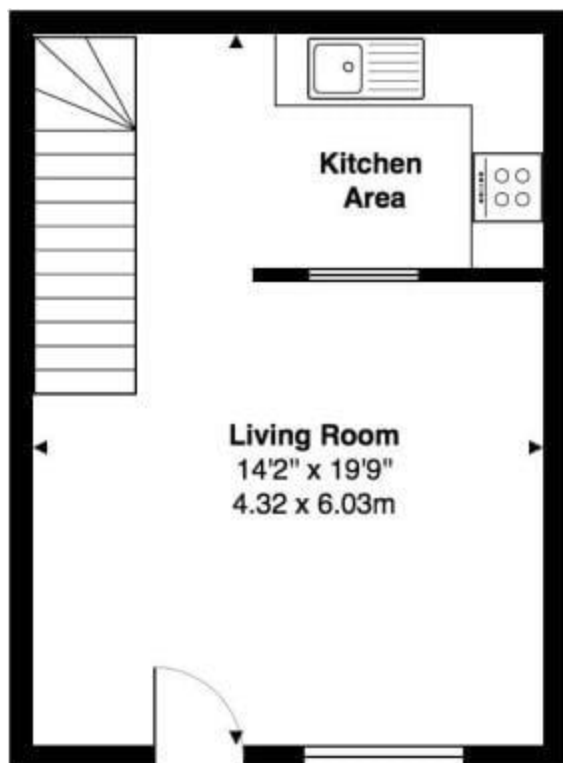
Bettermove are proud to present this charming 1 bedroom terraced house in Littlehempston available with no forward chain. The property is situated within beautiful well maintained communal grounds, featuring a tennis court and equestrian arena for residents to enjoy.

The property benefits from double glazing, electric heating throughout and has off street parking available in the communal residents parking spaces. The council tax band is B.

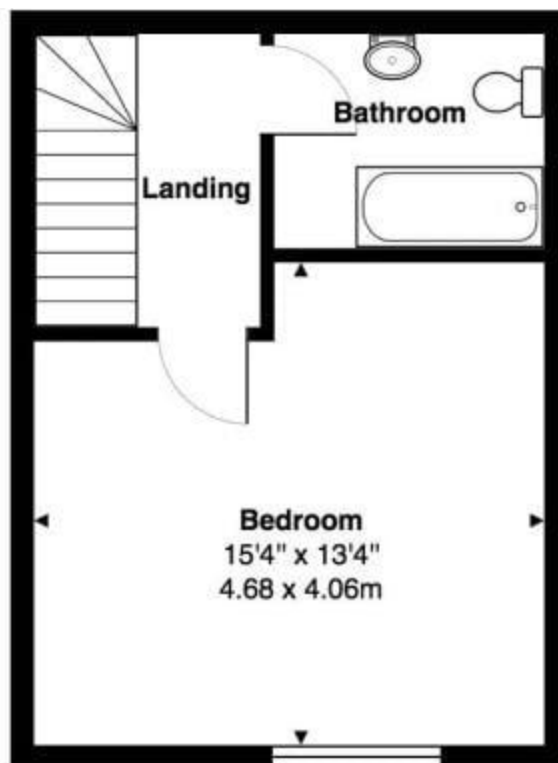
The interior of this well presented property comprises a spacious living room complete with a wood-burner and fitted kitchen on the ground floor. The first floor consists of the double bedroom and bathroom. The exterior boasts a front garden, perfect for enjoying the summer months.

This exciting opportunity should not be missed! All enquiries can be made through Bettermove on 0330 004 0050.






Ground Floor



First Floor

Energy Efficiency Rating		
	Current	Potential
Very energy efficient - lower running costs	66	93
(92+) A		
(81-91) B		
(69-80) C		
(55-68) D		
(39-54) E		
(21-38) F		
(1-20) G		
Not energy efficient - higher running costs		
England, Scotland & Wales		
		EU Directive 2002/91/EC
		

Environmental Impact (CO <sub>2</sub> ) Rating		
	Current	Potential
Very environmentally friendly - lower CO <sub>2</sub> emissions		
(92+) <b>A</b>	54	78
(81-91) <b>B</b>		
(69-80) <b>C</b>		
(55-68) <b>D</b>		
(39-54) <b>E</b>		
(21-38) <b>F</b>		
(1-20) <b>G</b>		
Not environmentally friendly - higher CO <sub>2</sub> emissions		
England, Scotland & Wales		
		EU Directive 2002/91/EC





20-22 Bridge End, Leeds, LS1 4DJ  
t: 0330 004 0050 e: [hello@bettermove.co.uk](mailto:hello@bettermove.co.uk)  
[www.bettermove.co.uk](http://www.bettermove.co.uk)