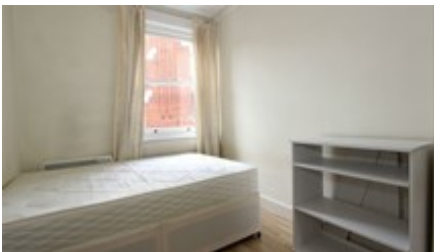




KUBIE GOLD
ASSOCIATES

YORK MANSIONS CHILTERN STREET W1U



- WELL PRESENTED
- TWO DOUBLE BED
- MANAGED MANSION BLOCK

- LIGHT AND BRIGHT
- SECOND FLOOR
- AVAILABLE IMMEDIATELY

£475 per week

SALES, LETTINGS & PROPERTY MANAGEMENT

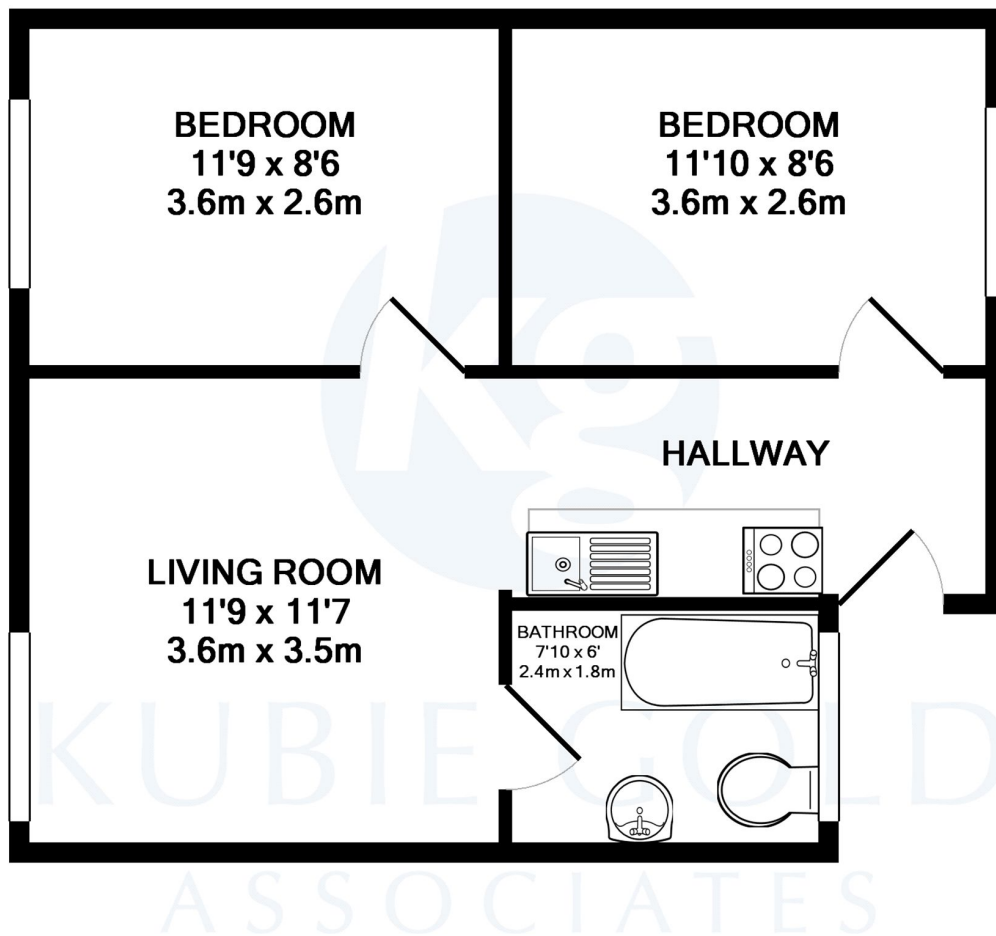
Tel: 020 7563 7272 36 Ivor, Regents Park, London, NW1 6EA
Email: info@kubie-gold.co.uk Website: www.kubie-gold.co.uk

Kubie Gold Associates is the trading name of Kubie Gold Associates Ltd
Company Registration No. 7271501 registered in England and Wales



York Mansions, W1U

Well presented two double bedroom apartment in well managed mansion block, good size reception, fully fitted kitchen, full family bathroom, property benefits from wood floors throughout and is light and bright with neutral decor, set on the second floor, situated in the heart of Marylebone close to all shops, restaurants and Baker Street tube station.



TOTAL APPROX. FLOOR AREA 451 SQ.FT. (41.9 SQ.M.)

Whilst every attempt has been made to ensure the accuracy of the floor plan contained here, measurements of doors, windows, rooms and any other items are approximate and no responsibility is taken for any error, omission, or mis-statement. This plan is for illustrative purposes only and should be used as such by any prospective purchaser. The services, systems and appliances shown have not been tested and no guarantee as to their operability or efficiency can be given

Made with Metropix ©2015

Energy Efficiency Rating		Environmental Impact (CO ₂) Rating	
Very energy efficient - lower running costs	Current	Potential	Very environmentally friendly - lower CO ₂ emissions
(92 to 100) A			(92 to 100) A
(81 to 91) B			(81 to 91) B
(69 to 80) C			(69 to 80) C
(55 to 68) D			(55 to 68) D
(39 to 54) E	44	44	(39 to 54) E
(21 to 38) F			(21 to 38) F
(1 to 20) G			(1 to 20) G
Not energy efficient - higher running costs			Not environmentally friendly - higher CO ₂ emissions
England, Wales & N.Ireland	EU Directive 2002/91/EC		England, Wales & N.Ireland
			EU Directive 2002/91/EC

