





- Luxury 1st Floor apartment
- Part of Converted Country Manor house
- Large Living Room
- Double Bedroom
- Bathroom
- Communal Gardens
- Ample Parking

Description

A delightful first floor apartment set within a fine, converted country manor house and located just off the A556 in Sandiway so ideally placed for access to the regions road and railway networks. The property is decorated and presented to a high standard. A communal grand entrance leads to a communal entrance hall with a grand staircase that leads to the first floor and private entrance door. The accommodation includes an entrance hall, large living room with expansive bay window, fitted kitchen, double bedroom with two built-in wardrobes/cupboards and a bathroom. There are lovely communal gardens and there is aplenty of parking.



Location
Tenure

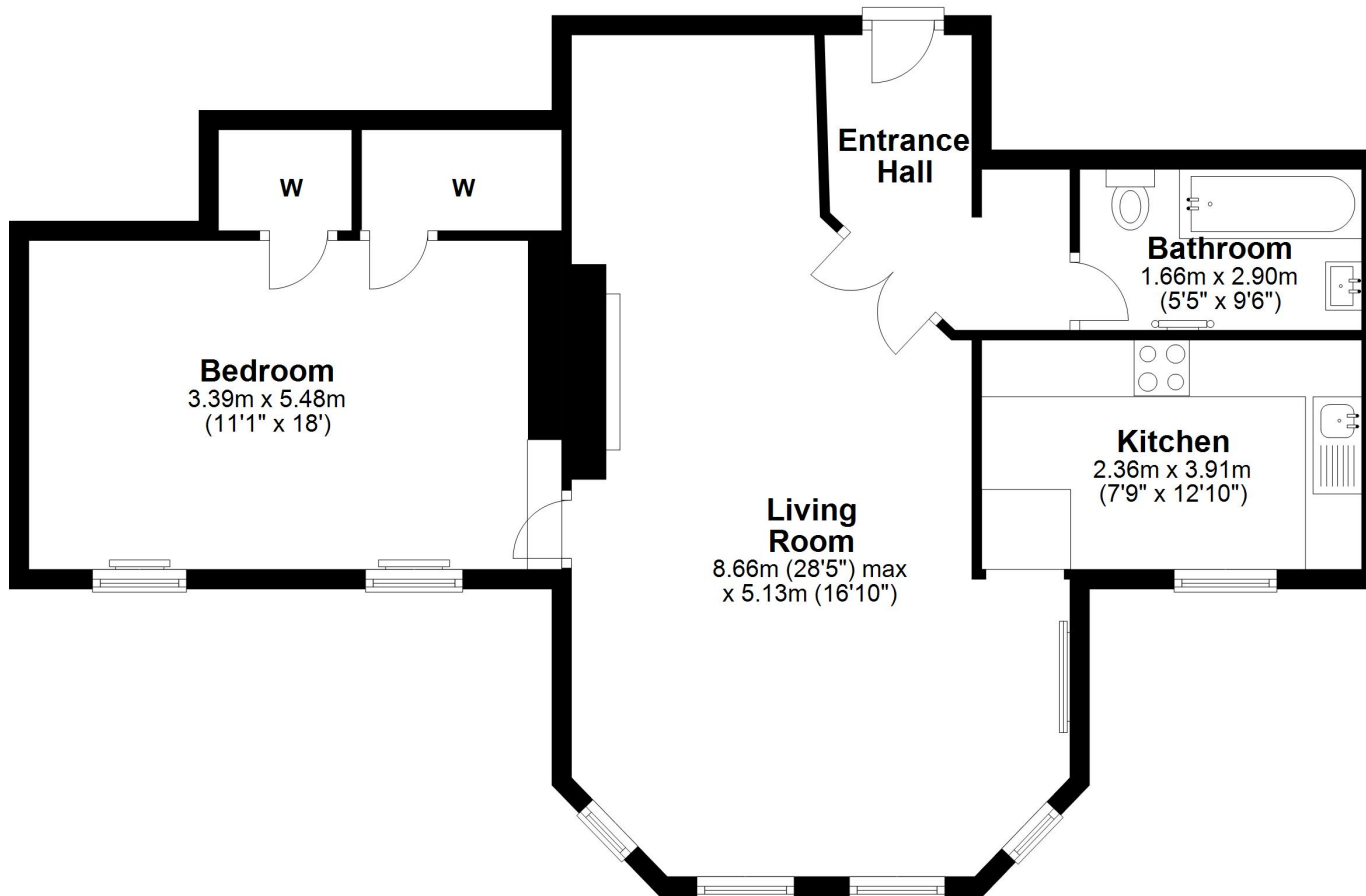
EPC Rating: E

Important Notes
Type Here



First Floor

Approx. 77.3 sq. metres (831.8 sq. feet)



Total area: approx. 77.3 sq. metres (831.8 sq. feet)

