

FOR
SALE



Prospect Place, Epsom, Surrey KT17 1JA

£110,000 - Leasehold



252, Chessington Road, Ewell, Epsom, KT19 9XF 0208 394 2555 sales@jacksonnoon.com

PROPERTY SUMMARY

*** KEY WITH AGENT *** JACKSON NOON ESTATE AGENTS are pleased to offer this ONE BEDROOM FIRST FLOOR RETIREMENT FLAT located close to EPSOM TOWN CENTRE with COMMUNAL GARDENS AND PARKING, on site manager and offered with NO CHAIN.....CALL NOW TO VIEW.

POINTS OF INTEREST

- *One Bedroom Retirement Flat*
- *First Floor*
- *Communal Gardens*
- *Parking*
- *On Site Manager*
- *No Chain*
- *Close to Epsom Town Centre*



ROOM DESCRIPTIONS

Front Door to

Communal Entrance

Stairs to first floor, door to

Entrance Hall

Entry phone system

Lounge

12' 9" x 9' 7" (3.89m x 2.92m) Heater, airing cupboard, window

Kitchen

9' 2" x 6' 0" (2.79m x 1.83m) Single drainer stainless steel sink unit inset in roll top work surface, range of cupboards and units, space for fridge freezer, plumbing for autowash, space for cooker

Bedroom

10' 8" x 8' 8" (3.25m x 2.64m) Heater, fitted wardrobes, window

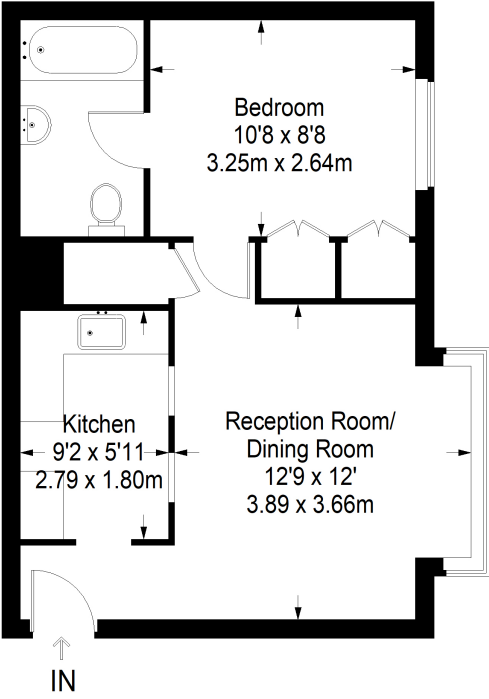
Bathroom

Comprising panel enclosed bath, fitted shower, low level wc, wash hand basin, heated towel rail, tiled walls

Outside

Communal Gardens & Parking

Prospect Place, Epsom



First Floor = 405 sq ft

Approximate Gross Internal Area
FIRST FLOOR = 405 sq ft / 37.62 sq m
Total = 405 sq ft / 37.62 sq m



This plan is for layout guidance only. Not drawn to scale unless stated. Windows and door openings are approximate. Whilst every care is taken in the preparation of this plan, please check all dimensions, shapes and compass bearings before making any decisions reliant upon them. (ID357409)