

# HASNETT ROAD

£225,000

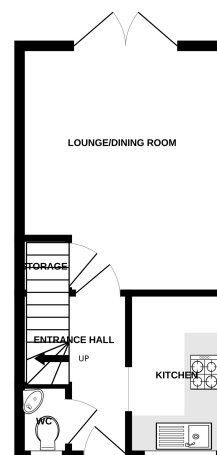


## Key Features

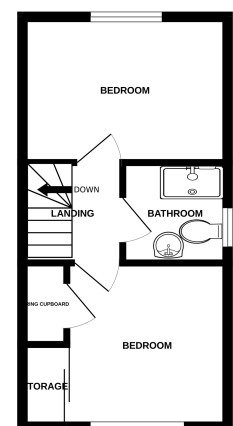
- ✓ Set in a cul-de-sac location.
- ✓ A well presented semi-detached house.
- ✓ Two Bedrooms.
- ✓ Enclosed Rear Garden.
- ✓ Off Road Parking.



GROUND FLOOR  
266 sq. ft. (24.7 sq.m.) approx.



1ST FLOOR  
266 sq. ft. (24.7 sq.m.) approx.



TOTAL FLOOR AREA: 533 sq. ft. (49.5 sq.m.) approx.  
Made with Metaplan 12/02/07