



**Pool Hall Crescent
Wolverhampton
West Midlands
WV3**

Offers in Excess of £258,000

bettermove

Pool Hall Crescent Wolverhampton

Bettermove are proud to present this 3 bedroom semi-detached in Wolverhampton, available with no forward chain.

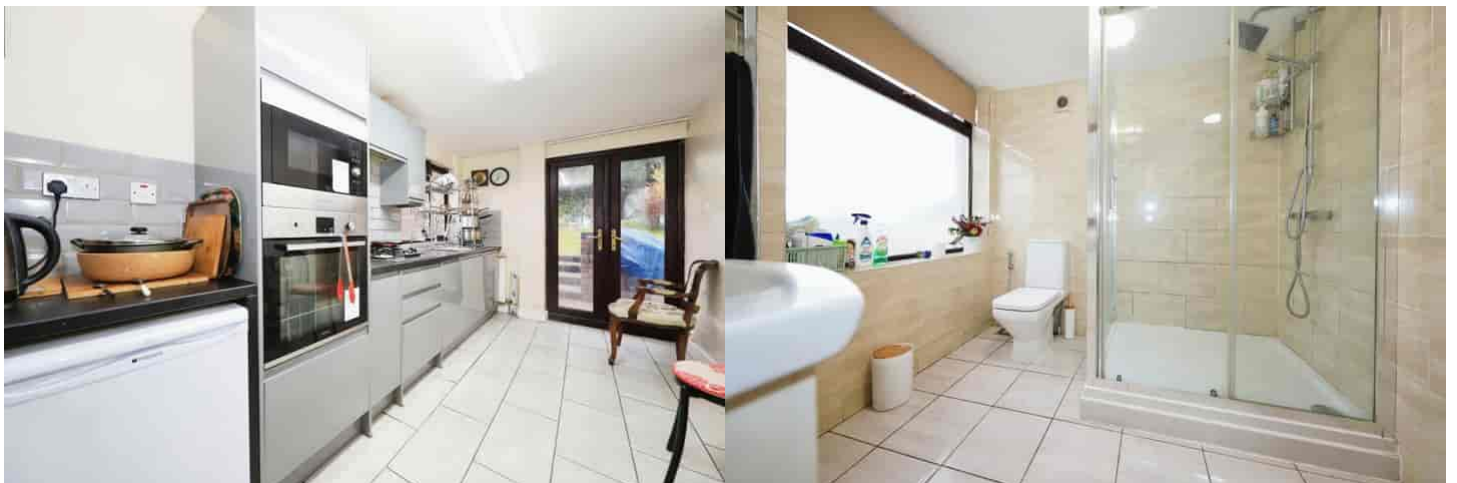
The property benefits from double glazing and gas central heating throughout, with off street parking available via the driveway.

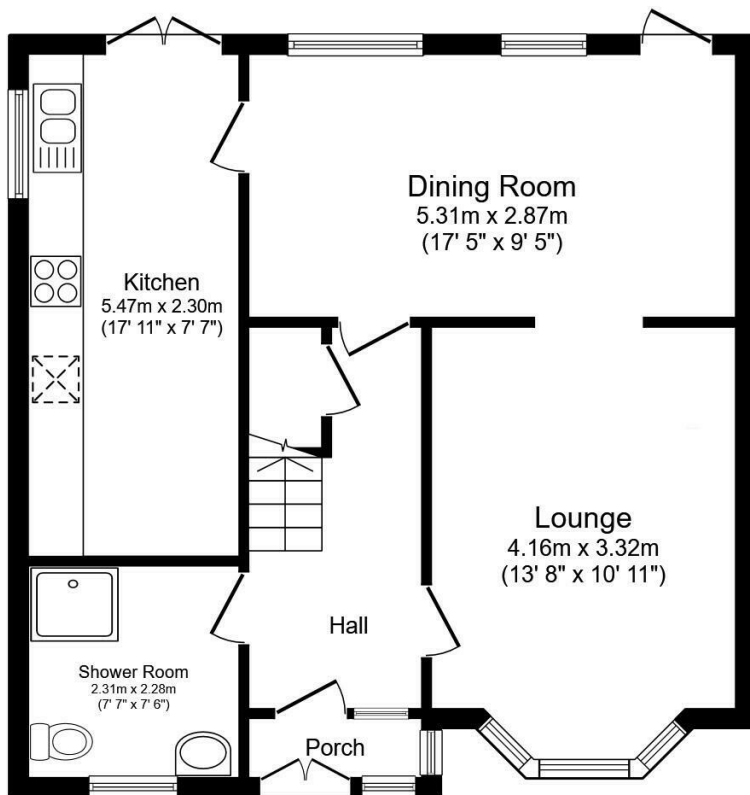
The council tax band is B.

The interior of this beautifully presented property comprises a spacious living room, dining room, shower room and fitted kitchen on the ground floor. The first floor consists of three bedrooms and the family bathroom. The exterior boasts a private rear garden, perfect for enjoying the summer months.

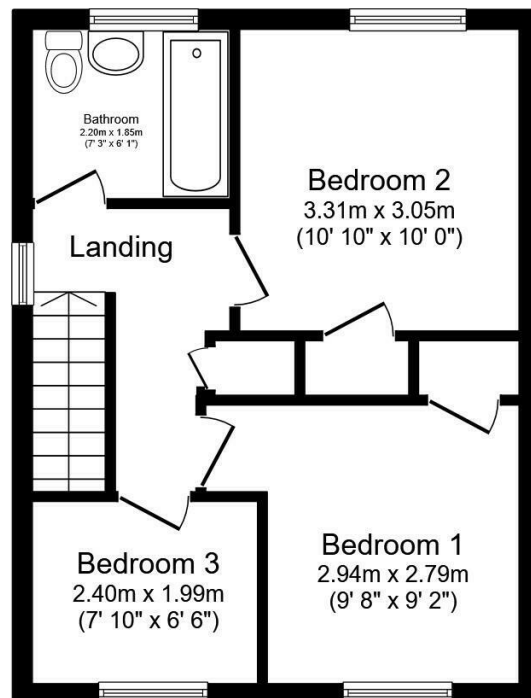
Located in the popular city of Wolverhampton, the property is close to a range of amenities, including shops, supermarkets, restaurants and pubs. Excellent transport connections can be found from the A454, Wolverhampton train station and many local bus routes.

This exciting opportunity should not be missed! All enquiries can be made through Bettermove on 0330 004 0050.





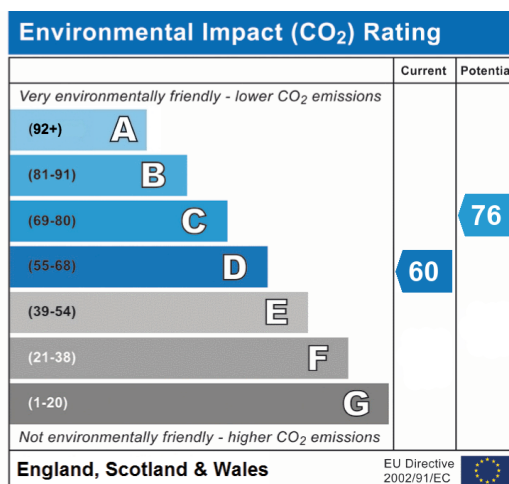
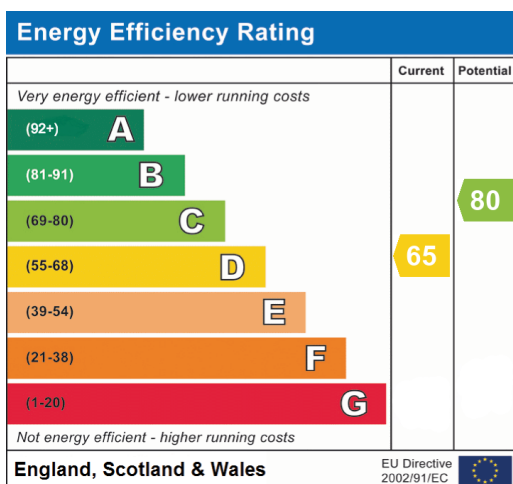
Ground Floor



First Floor

Total floor area 96.9 m² (1,043 sq.ft.) approx

This floor plan is for illustrative purposes only. It is not drawn to scale. Any measurements, floor areas (including any total floor area), openings and orientation are approximate. No details are guaranteed, they cannot be relied upon for any purpose and they do not form part of any agreement. No liability is taken for any error, omission or misstatement. A party must rely upon its own inspection(s).
Plan produced for Your Move. Powered by www.focalagent.com





20-22 Bridge End, Leeds, LS1 4DJ
t: 0330 004 0050 e: hello@bettermove.co.uk
www.bettermove.co.uk