



**Brittens Cottages, High Street, Bletchingley, Redhill, RH1**

**H O U N D & P O R T E R**

FIND A HOUSE. MAKE IT HOME

**Brittens Cottages, High Street, Bletchingley, Redhill, RH1**



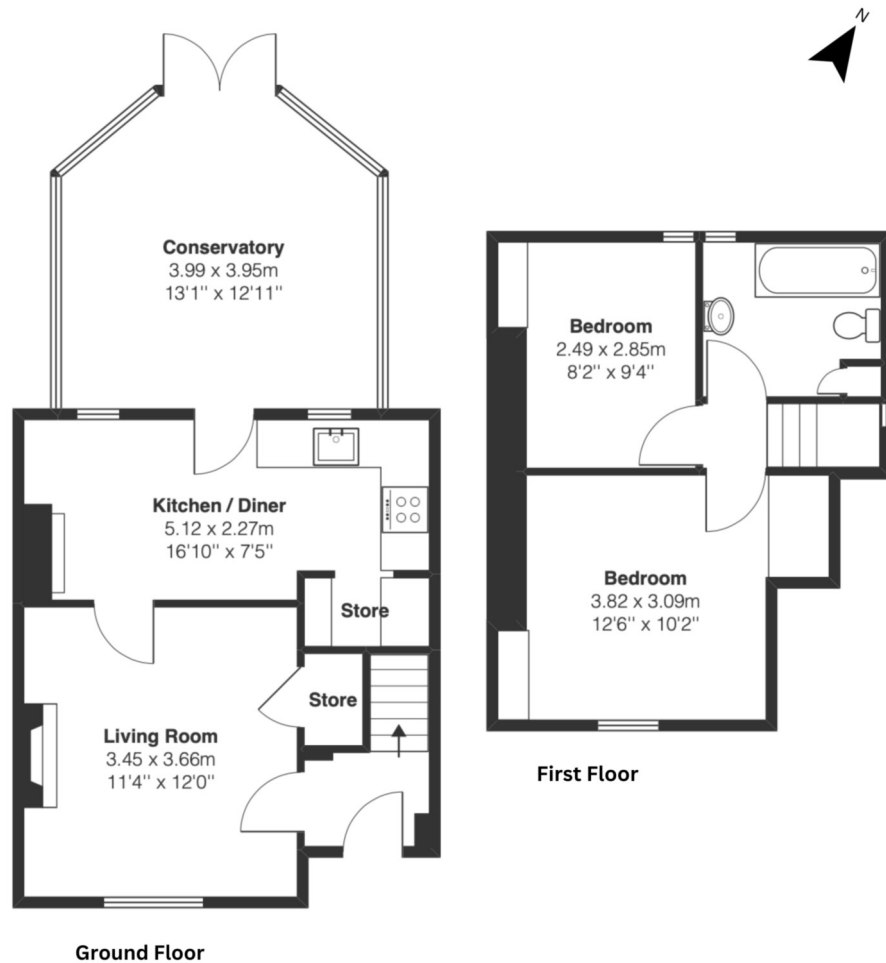
- Charming 1857 built two bedroom cottage
- Set in the heart of Bletchingley village
- Contemporary upstairs bathroom
- Beautiful nature walks at your door steps
- Extensive garden perfect for a family
- Potential to extend (STPP)

# Brittens Cottages, High Street, Bletchingley, Redhill, RH1



High Street, RH1

Gross Internal Area:  
752sqft / 70.2m<sup>2</sup>



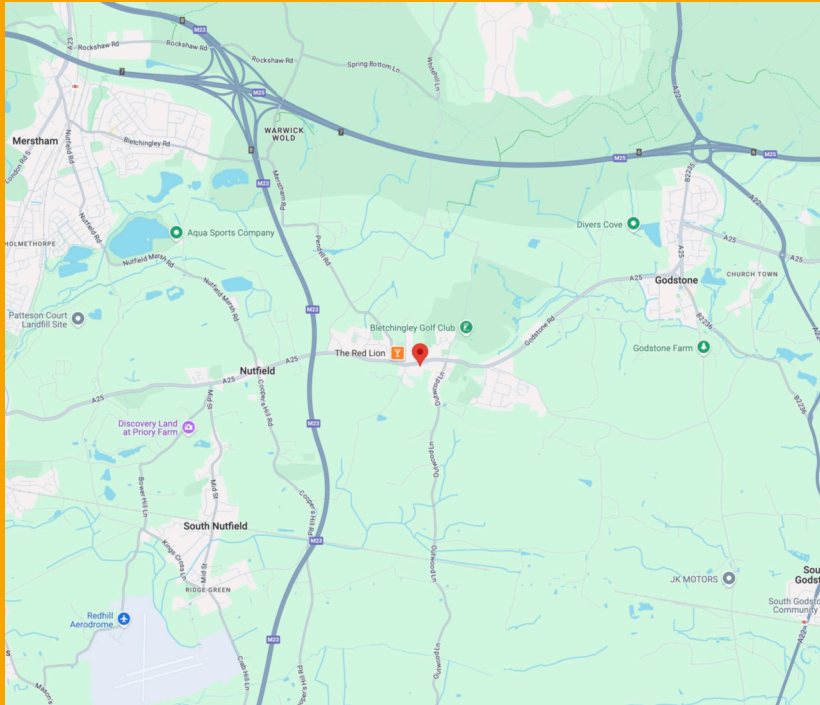
Nestled in the heart of Bletchingley Village, this charming 1857 end-of-terrace cottage combines historic charm with modern comforts. Upon entry, you'll find a spacious, light-filled living room to your left. The room is rich in character with picture railings and a versatile multi-fuel stove, creating a warm, inviting atmosphere. Toward the rear, the recently refreshed kitchen awaits, complete with a working gas fireplace and ample room for a dining table. Through a rear door, step into the bright conservatory, thoughtfully designed with double glazing and self-cleaning glass. The spacious lawn is bordered by mature trees and lush greenery, leading to a secluded 'secret garden' at the rear.

The spacious lawn is bordered by mature trees and lush greenery, leading to a secluded 'secret garden' at the rear. With views of the countryside beyond, this garden feels like a private retreat. A well-equipped garden shed with electricity offers the potential for a home office or creative space. Upstairs, the cottage offers two inviting bedrooms. The large master bedroom at the front includes two built-in wardrobes, while the second bedroom, located at the back, offers lovely views of the garden & surrounding countryside. The family bathroom, elegantly designed by Burlington, features underfloor heating for added comfort and completes the first-floor amenities.

**Disclaimer:** This floor plan has been produced by Lock and Key Media. All measurements are approximate and no responsibility is taken for any errors. For illustration purposes only.



## Brittens Cottages, High Street, Bletchingley,



### LOCATION

Located a short stroll from the village's amenities, you'll find a post office, convenience store, and several charming pubs, along with Lamingtons Tea House and the local church. Frequent east-west bus services and nearby Nutfield train station provide seamless access to London, Brighton, and Gatwick Airport, making it a convenient base for both local and extended travel.

### ADDITIONAL INFORMATION

Council tax band E, £2,882.89 PA



### DID YOU LIKE WHAT YOU'VE JUST SEEN?

Get in touch. We are more than happy to arrange a viewing, assist you with the complicated paperwork and find you the best local businesses to help during and after your move. We look forward to hearing from you.

58 Castle Walk  
Reigate, Surrey  
RH2 9PX

01737 317880  
hello@houndandporter.co.uk