



1 Eskdale Apartments Queens Drive West, Ramsey, Isle of Man. IM8 2JD

Wonderful modern ground floor apartment with private access, two double bedrooms and an onsite parking space



£185,000 Leasehold

PROPERTY DESCRIPTION

ACCOMODATION Apartment 1, Eskdale Apartments, located on Queens Drive West in Ramey, is a fully renovated residence boasting contemporary finishes throughout. The main living area is an open-plan lounge/kitchen/diner, creating a spacious and cohesive environment perfect for modern living. The kitchen features sleek, modern fixtures and ample space for dining and relaxation. This inviting space is ideal for both entertaining guests and enjoying quiet evenings at home.

The apartment includes two generously sized double bedrooms, ensuring comfort and ample storage. The master bedroom is particularly notable, featuring an en-suite shower room for added privacy and convenience. Additionally, there is a well-appointed three-piece bathroom, finished to a high standard. Residents benefit from private access at both the front and rear of the property, along with an allocated off-road parking space, enhancing the apartment's convenience and exclusivity.

INCLUSIONS Fitted carpets, blinds, curtains, light fittings

TENURE Leasehold with active management company in place, charges approximately £103 per month.

FEATURES

- Modern Lower Ground Floor Apartment
- Fully Renovated in 2019
- Two Great Double Bedrooms
- Private Front and Rear Entrance
- Family Bathroom plus En-Suite Shower Room
- Modern Finish Throughout
- Gas Central Heating Modern Boiler and uPVC Double Glazing
- Close to Amenities, Beach and Ramsey Centre
- Dedicated Off-Road Tandem Parking Space
- Open Plan Lounge, Kitchen, Diner

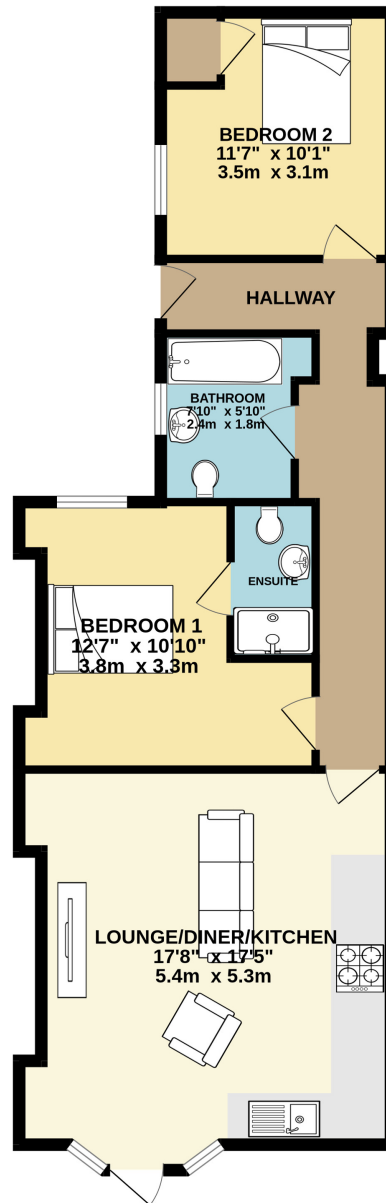


Property Images



FLOORPLAN

GROUND FLOOR
763 sq.ft. (70.8 sq.m.) approx.



TOTAL FLOOR AREA : 763 sq.ft. (70.8 sq.m.) approx.

Whilst every attempt has been made to ensure the accuracy of the floorplan contained here, measurements of doors, windows, rooms and any other items are approximate and no responsibility is taken for any error, omission or mis-statement. This plan is for illustrative purposes only and should be used as such by any prospective purchaser. The services, systems and appliances shown have not been tested and no guarantee as to their operability or efficiency can be given.
Made with Metropix ©2024

DISCLAIMER: Whilst Manxmove Ltd believe that these details are correct, neither Manxmove Ltd or their clients guarantee their accuracy in any way. Consequently, these details are not to be used to form part of any legally binding contract. Prospective purchasers or tenants are advised to visit this property to satisfy themselves as to the correctness of these details. Please note, we use wide angle camera lenses in order to show as much of each room as possible. This is not intended to mislead any prospective purchasers or tenants in any way and an honest verbal description is always available prior to viewing if required.