



Day & Co
ESTATE AGENTS

28 Cavendish Street
Keighley
BD21 3RG



9 Aireville Crescent, Silsden,
Keighley, West Yorkshire, BD20
0JA

£260,000

T: 01535 664609

W: www.dayandcoestateagents.co.uk

E: keighley@dayandcoestateagents.co.uk

- SEMI-DETACHED HOUSE
 - POPULAR VILLAGE OF SILSDEN
 - PARKING & DETACHED GARAGE
- THREE BEDROOMS
 - CORNER PLOT
 - EPC RATING D

SUMMARY

** A WELL PRESENTED THREE BEDROOM SEMI-DETACHED FAMILY HOME, CORNER PLOT, PARKING & DETACHED GARAGE, INTERNAL VIEWING ADVISED, EPC RATING D **

FULL DESCRIPTION

Day & Co are pleased to be marketing for sale this well presented, three bedroom semi-detached property enjoying accommodation which could be of interest to a growing family situated in the popular village of Silsden. An internal viewing is advised to appreciate this property with the accommodation briefly comprising -

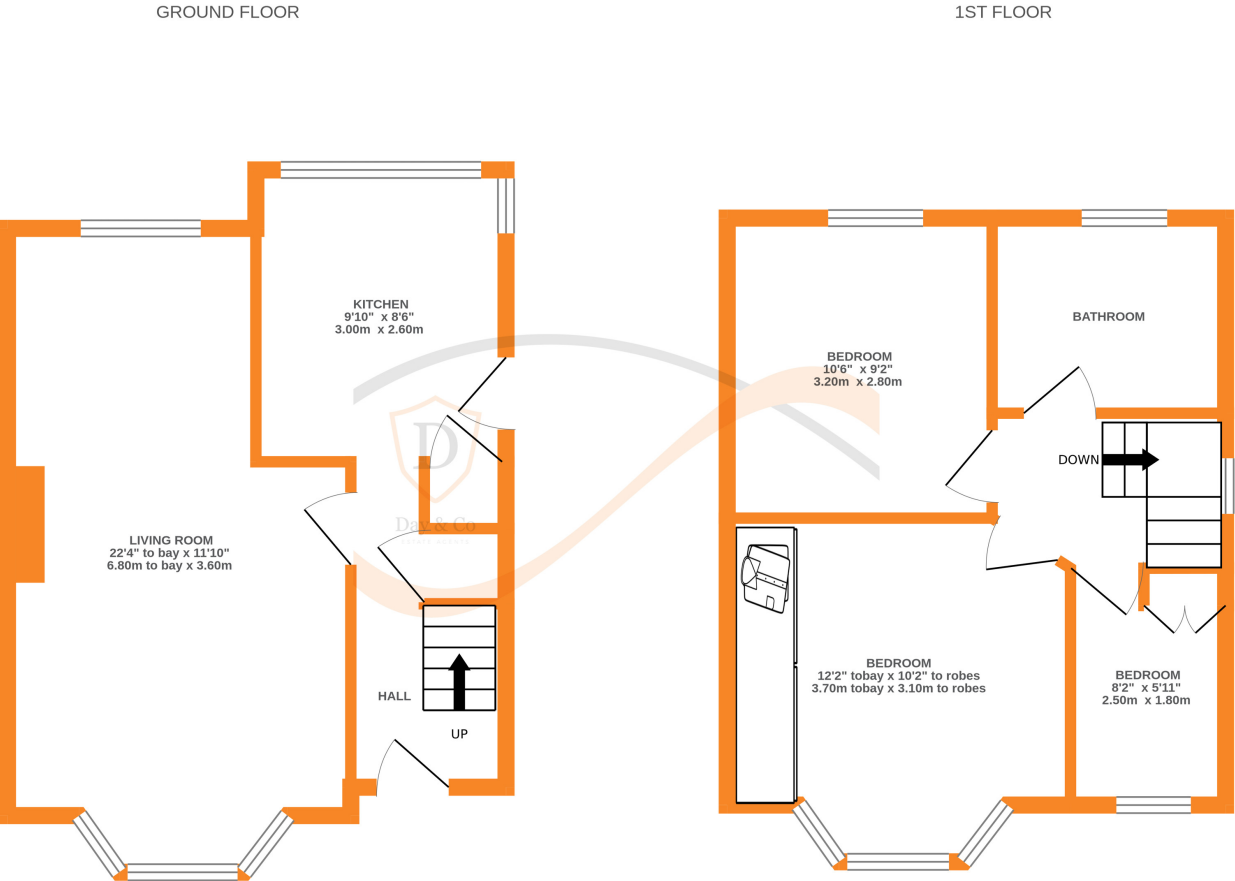
Ground Floor - Hallway leads to a staircase to the first floor and a useful under stairs storage area. The spacious living/ding room has a bay window to the front, log-burning stove and a window to the rear. The kitchen has a modern range of wall and base units, laminate-effect work surfaces, electric oven with hob and extractor and a large window overlooking the rear garden.

First Floor - Landing, two double bedrooms, one with fitted wardrobes and a third single bedroom, complete with a built-in bed and storage. The house bathroom offers ample storage space and has a modern suite.

Gas central heating and double glazing.

Externally, the front garden has an artificial lawn, while the driveway extends along the side of the property to a single garage, there are also 2 additional parking spaces. The rear garden boasts a large flagged patio, lawn and raised decking. There is also a covered storage area, ideal for keeping logs.

EPC Rating D



Whilst every attempt has been made to ensure the accuracy of the floorplan contained here, measurements of doors, windows, rooms and any other items are approximate and no responsibility is taken for any error, omission or mis-statement. This plan is for illustrative purposes only and should be used as such by any prospective purchaser. The services, systems and appliances shown have not been tested and no guarantee as to their operability or efficiency can be given.
Made with Metropix ©2025