



Estate Agents and Solicitors

## 2 Baileyfield Road, Portobello, Edinburgh, EH15 1DL

Tastefully Presented & Spacious, Three Bedroom, End-Terrace Bungalow

Up to date price and viewing info at [mov8realestate.com/property](https://www.mov8realestate.com/property)

espc rightmove<sup>®</sup> Zoopla  
find your happy

# Property Description

Tastefully presented and spacious, three-bedroom, end-terrace bungalow, with front and rear gardens. Conveniently located on a quiet side street, close to the centre of Portobello, east of Edinburgh city centre.

Comprises a vestibule and hallway, living room, kitchen, three flexible bedrooms, a WC and a family bathroom.

Highlights include a fitted kitchen with appliances, a modern bathroom suite, and an impressive public room with a bay window and wood-burning stove. In addition, there is gas central heating, double glazing, contemporary flooring, and multiple skylight windows.

Externally, there is a low-maintenance front garden; and a large enclosed rear garden with a lawn, patio and a store shed.

A vestibule entrance has period mosaic tiled flooring and opens to the main hall featuring contemporary flooring and three built-in storage cupboards. The front-facing living/dining room features a bay window, wood-effect flooring, a shelved press, a solid fuel burning stove and period cornice work.

Set off the living room, the kitchen is fitted with modern units, stone effect worktops, a stainless-steel sink with drainer, a washing machine, fridge/freezer; and an integrated oven, gas hob with an extractor hood above.

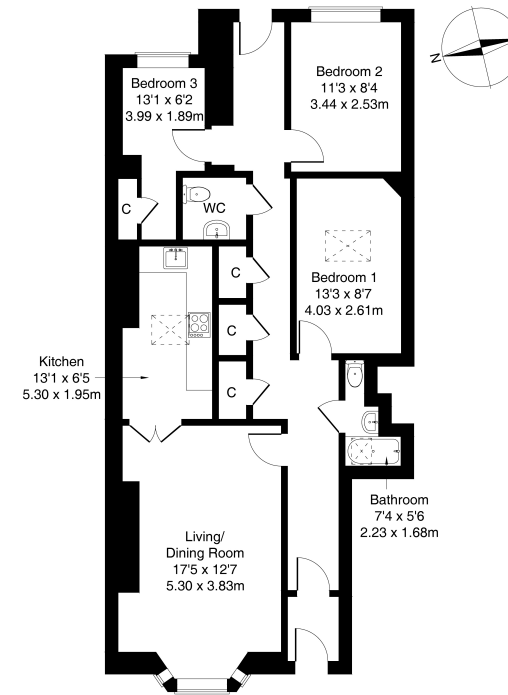
A double bedroom is set off the hall with a skylight window and ample space for freestanding storage. Two further flexible bedrooms are set to the rear with carpeted flooring and pendant light fittings. Set internally is a WC with two piece suite, whilst a family bathroom is also set internally with a skylight window and a shower over the bath.

A 360 Virtual Tour is available online.

**mov8** REAL ESTATE  
Edinburgh Agents and Solicitors

**2 Baileyfield Road, Edinburgh, EH15 1DL**

Approximate Gross Internal Area: (915 sq ft - 85 sq m.)

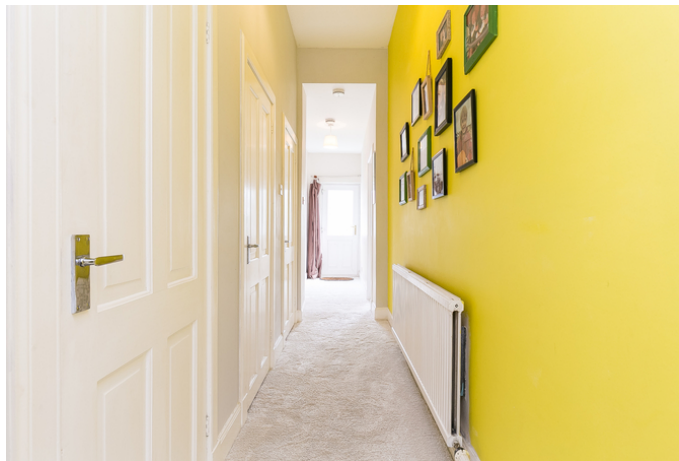


Legal Disclaimer : Floor-plan and measurements are for illustrative guidance only, and not intended to form part of any contract.

# Area Description

Portobello lies on the eastern edge of Edinburgh, and is renowned for its extensive sandy beach and seafront promenade. The area has a bustling high street, with a good range of local shops, bars, restaurants, and banks, whilst The Jewel and Fort Kinnaird offer large supermarkets and a range of major high-street names, restaurants and a multi-screen cinema. Frequent bus services are available

from the High Street, nearby Brunstane rail station offers further commuting options, whilst the A1 and the city bypass are also easily accessed. There are a number of parks, golf courses, and sport facilities in the local area, as well as the Portobello Leisure centre, with its swimming pools, Spa, Turkish baths, gym, fitness studio and soft play.





## Our Services

- Free pre-sale property valuations
- Great value fixed estate agency fees
- Extensive buyer matching database
- Purchase and sale conveyancing

## Contact Us

0345 646 0208

sales@mov8realestate.com

www.mov8.com

## Head Office

6 Redheughs Rigg, Edinburgh, EH12 9DQ

## Glasgow Office

77 Renfrew Street, Glasgow, G2 3BZ



Estate Agents and Solicitors

