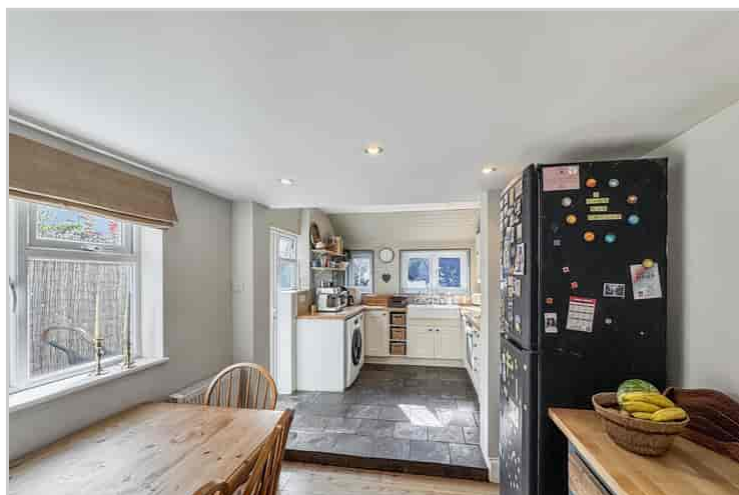


3 Somerset Road, Orpington, Kent, BR6 0EZ

Property Images





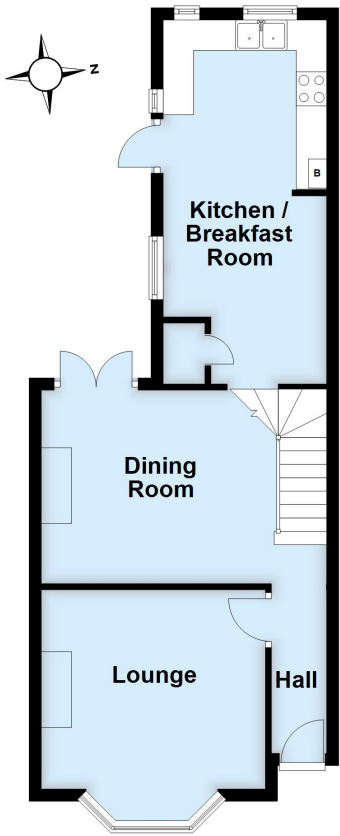






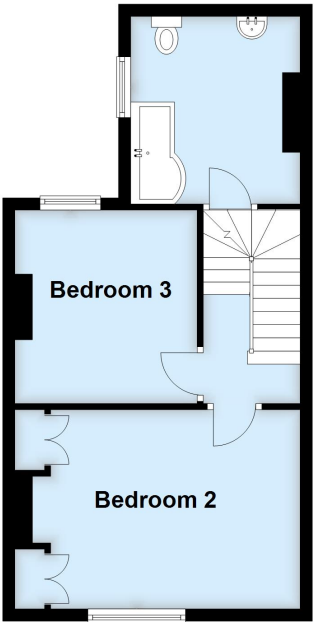
Ground Floor

Approx. 47.1 sq. metres (507.2 sq. feet)



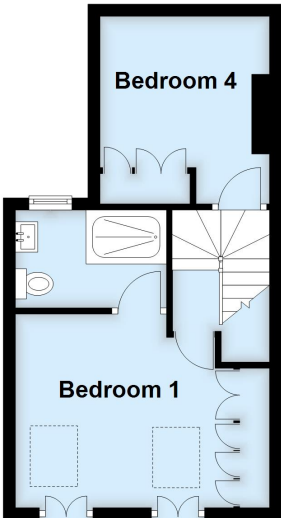
First Floor

Approx. 39.9 sq. metres (429.3 sq. feet)



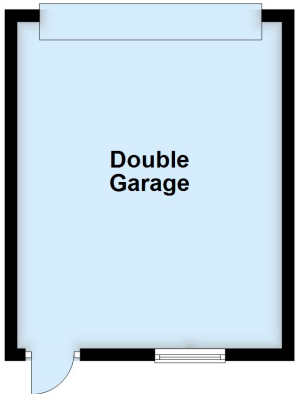
Second Floor

Approx. 29.5 sq. metres (317.6 sq. feet)



Outbuilding

Approx. 23.6 sq. metres (253.5 sq. feet)



Total area: approx. 140.1 sq. metres (1507.6 sq. feet)

This plan is for general layout guidance and may not be to scale.
Plan produced using PlanUp.