



Five Bedroom Terraced House
Paget Street, Gillingham, Kent, ME7 5EP

Guide Price £300,000
Freehold

Paget Street, Gillingham, Kent, ME7 5EP

Guide Price £300,000

Freehold

Description

**** Guide Price £300,000 - £325,000 **** This substantial and beautifully maintained family home in the heart of Gillingham is perfectly situated close to the train station, hospital, and a range of local amenities, making it an ideal choice for convenience and comfort. Upon entering, you'll find a welcoming separate lounge and a dining room that seamlessly flows into the well-appointed kitchen. Off the kitchen, a spacious bathroom features a luxurious four-piece suite, offering a perfect blend of style and functionality. The converted double cellar offers a cosy family room and one of the five generously sized bedrooms, providing versatile space for guests or additional family members. Moving first floor, you'll discover three more spacious bedrooms, each offering comfort and ample storage. The converted loft is a true highlight, featuring a generous bedroom and a modern bathroom complete with a walk-in shower. The top room offers breathtaking views that stretch as far as the river, a perfect retreat for relaxation. Externally, the property features low-maintenance front and back gardens. The rear garden is particularly inviting, with plenty of space for entertaining, making it an ideal spot for family gatherings or summer barbecues. Lovingly cared for over the years, this family home is a rare find in such a desirable location. To truly appreciate the space and charm on offer, we highly recommend arranging a viewing. Contact the Greyfox Sales team in Rainham today to secure your opportunity to explore this fantastic property!

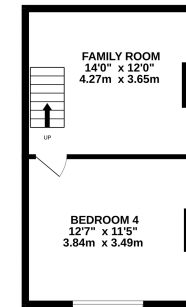
Key Features

- Five Bedroom Terraced Family Home
- Three Reception Rooms
- Two Bathrooms
- Spacious open plan kitchen/diner
- Deceptively Spacious Throughout
- 0.6 Miles To Gillingham Train Station
- Rear Garden Measuring Approx 69 x 14'03
- Close To Local Local Amenities And Medway Hospital

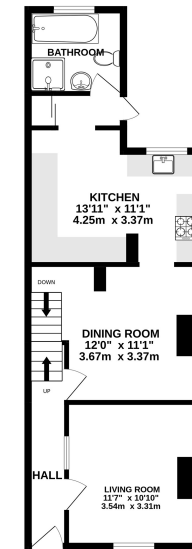
Local Area

Gillingham is located within the Medway towns and offers railway links to central London and Ebbsfleet International and road connections to the A2/M2, M25 and M20. In addition to its town centre Gillingham

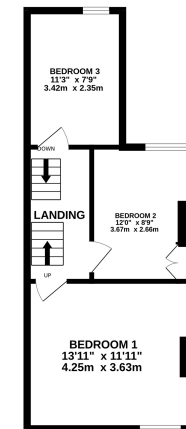
BASEMENT
327 sq.ft. (30.4 sq.m.) approx.



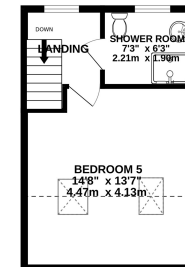
GROUND FLOOR
517 sq.ft. (48.0 sq.m.) approx.



1ST FLOOR
393 sq.ft. (36.5 sq.m.) approx.



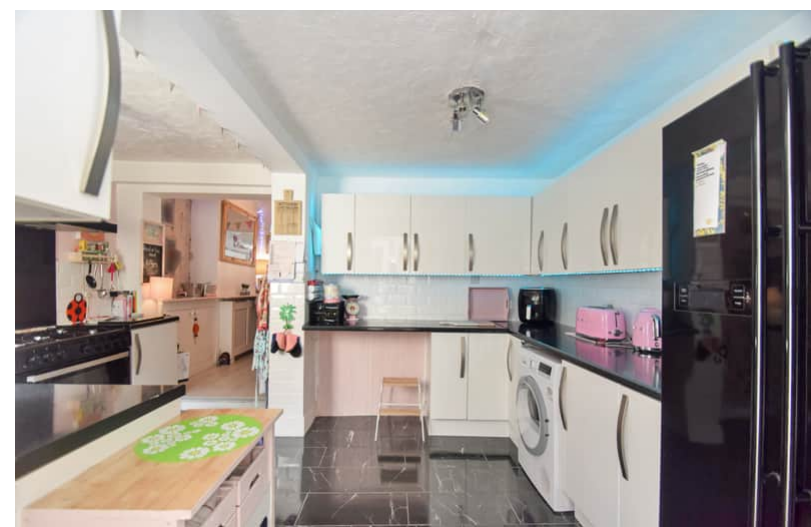
2ND FLOOR
293 sq.ft. (28.3 sq.m.) approx.



TOTAL FLOOR AREA : 1520 sq.ft. (141.2 sq.m.) approx.

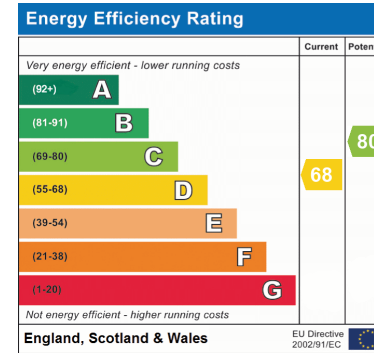
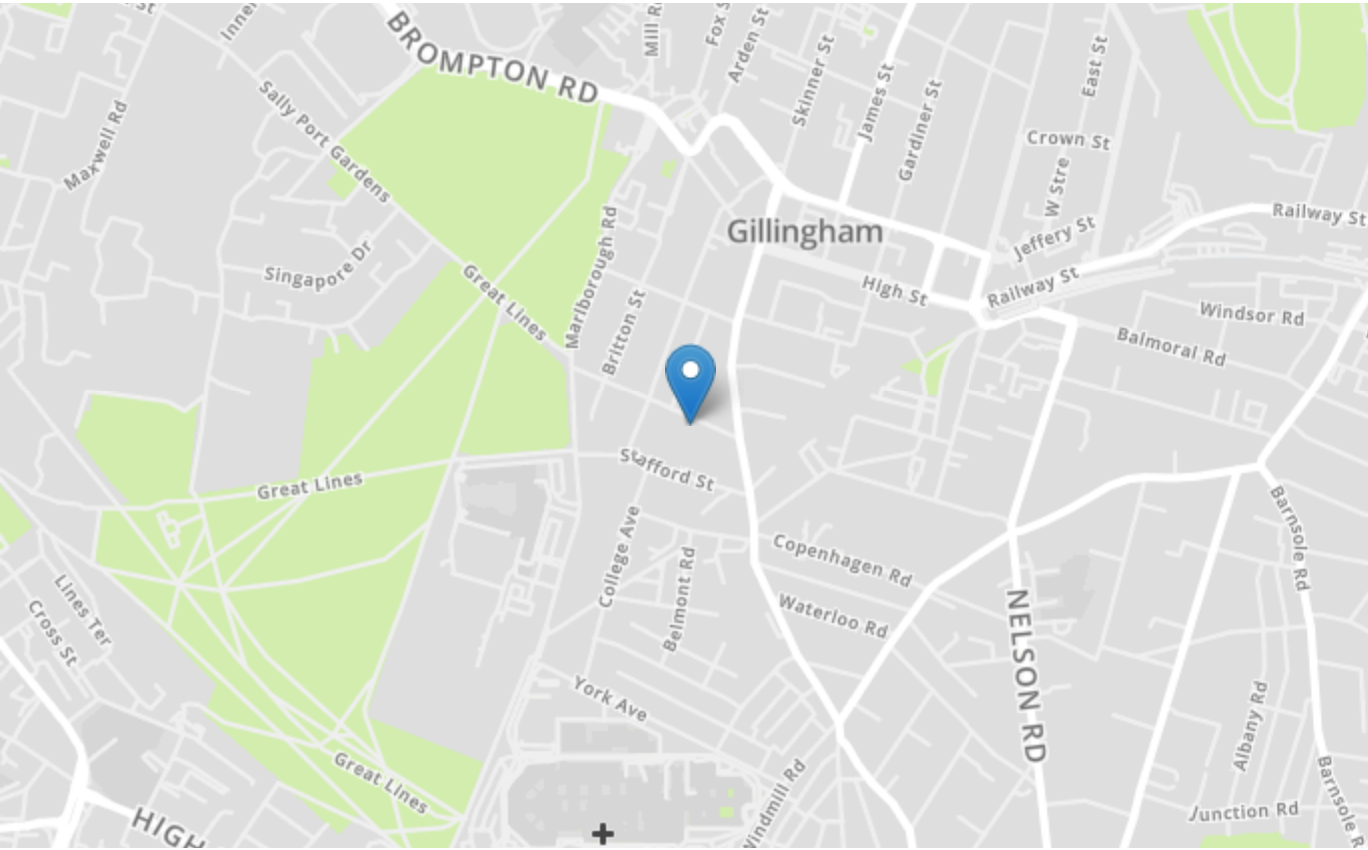
Whilst every attempt has been made to ensure the accuracy of the floorplan contained here, measurements of doors, windows, rooms and any other items are approximate and no responsibility is taken for any error, omission or mis-statement. This plan is for illustrative purposes only and should be used as such by any prospective purchaser. The services, systems and appliances shown have not been tested and no guarantee as to their operability or efficiency can be given.

Made with Metropix ©2024



Property Location

Paget Street, Gillingham, Kent, ME7 5EP



Tenure	Freehold
Lease Term	N/A
Ground Rent	N/A
Service Charge	N/A
Local Authority	Medway
Council Tax	Band B

Greyfox Walderslade

Unit 2, Thetford House
Walderslade Village Centre
Walderslade Road
Chatham
Kent
ME5 9LR
Tel: 01634 672227 Email:
walderslade@greyfox.co.uk

Greyfox Rainham

67C High Street
Rainham
Kent
ME8 7HS
Tel: 01634 377737 Email:
rainham@greyfox.co.uk

Agent Notes

These particulars are prepared as a general guide to a broad description of the property and should not be relied upon as a statement or representation of fact and do not constitute part of an offer or contract. The seller does not make or give nor do our employees or Greyfox have authority to make or give any representation or warranty to the property. We have not carried out a structural survey and the services, appliances and specific fittings have not been tested. All photographs, measurements, floorplans and distances referred to are given as a guide only and should not be relied upon for the purchase of carpets or any other fixtures or fittings. Lease details, service charges and ground rent (where applicable) and council tax are given as a guide only and should be checked and confirmed by you on inspection and your solicitor prior to exchange of contracts. If there are any points of particular importance to you we will be pleased to check the information for you and to confirm that the property remains available. This is particularly important should you be travelling some distance to view and where statements have been made by us to the effect that the information has not been verified. The copyright of all details, photographs and floorplans remain exclusive to Greyfox. For details of our privacy policy and referral fee arrangements with any of our selected partner companies please visit <https://www.greyfox.co.uk/legal/privacy> and <https://www.greyfox.co.uk/referral-fees>.