



# The White House, 285 North Deeside Road, Milltimber, Aberdeen AB13 0HA

Offers over £769,000

STUNNING ART DECO STYLE DETACHED SOUTH FACING FOUR/FIVE BEDROOM  
DWELLINGHOUSE WITH BEAUTIFUL GARDENS, DETACHED DOUBLE GARAGE AND  
CIRCULAR DRIVEWAY

Stronachs

# The White House, 285 North Deeside Road, Milltimber, Aberdeen AB13 0HA

Offers over £769,000

Viewing: Contact Selling Agents on 01224 626100

We are delighted to bring to the market this STUNNING FOUR/FIVE BEDROOM DETACHED FAMILY HOME. Set in generous grounds, with sweeping circular driveway allowing easy entry and exit onto North Deeside Road, this much loved property is in excellent order throughout, with new 'Drumoak' Kitchen and Bathrooms. Built in the Art Deco style, the oval windows to the rear allow incredible views to the south, and every room is bathed in natural light.

Benefitting from gas central heating and full double glazing, with security alarm, the accommodation comprises, on the ground floor: Entrance Vestibule; spacious Reception Hall with Cloakroom and separate WC off; Gun Room/Store; beautiful Lounge to the rear with oval window; formal Dining Room with corner aspect windows; newly fitted Drumoak Kitchen with central breakfast island; Utility Room; Cloak/Laundry Room; Bedroom 5/Sitting room to the rear; and generous Study to the front. The upper floor accommodation again has a spacious Landing area with Store and Linen cupboard off; new Family Bathroom; Master Bedroom with En-Suite Dressing Room leading to En-Suite Bathroom; and three further most generous Double Bedrooms, one with oval window to rear. The driveway to the front allows off-street parking for a number of vehicles, with central garden and lawn areas. There is also a generous detached Double Garage. The fully enclosed gardens to the rear are beautifully landscaped with a variety of mature shrubs, flowering plants and trees, with gravel paths leading to the sunken area with fish pond. There is a private patio area to the side of the house, as well as fabulous patios to the rear. This is simply a beautiful home in a fabulous location, with lovely stained glass art deco style windows to the front as well as the curved walls to the rear.



## MILLTIMBER

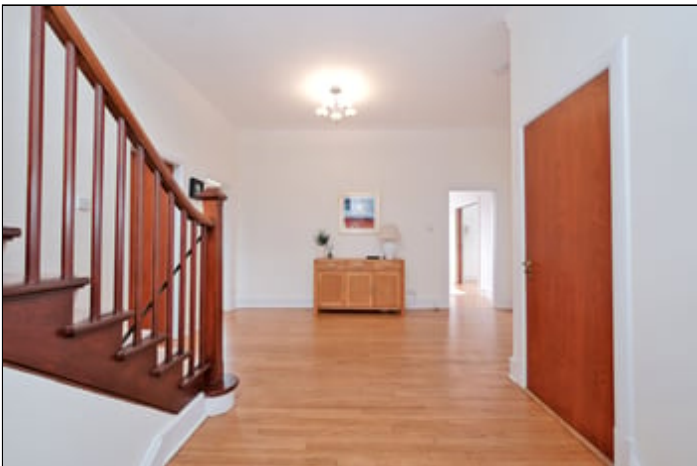
Milltimber is a sought after suburb of Aberdeen well placed for local primary and secondary schools which enjoy an excellent reputation, and a choice of shopping and other facilities available at nearby Peterculter, Bielside and Cults. A wide range of sporting and recreational attractions can also be found in the vicinity including Kippie Lodge Sports and Country Club, two 18 hole golf courses at Deeside and Peterculter, and a choice of hillside and forest walks as well as the opportunity for Salmon and Sea Trout fishing in the River Dee. Public transport is readily available providing easy access to the City Centre and to Royal Deeside, and access to the AWPR.

## ENTRANCE VESTIBULE



Entered via solid door with glazed side panels, the Entrance Vestibule has traditional floor tiles and wood panelling, with recessed meter cupboard. Wall light fitting and matwell. A Georgian style glazed door with glazed side panels provides access to the Reception Hall.

## RECEPTION HALL



Laid with solid wood flooring, this is an impressive entry space to the property, with carpeted stair case to the upper floor accommodation. Two electric heaters provide extra warmth, with ceiling light fitting, smoke alarm and telephone point.

## CLOAKROOM AND WC

The Cloak room has both hanging rail and shelving, as well as wall mounted coat hooks. In turn a part glazed door leads to the WC, with window to side and additional window providing extra light to the Cloakroom. Wash hand basin, toilet pedestal, ceiling light fitting, central heating radiator.

## GUNROOM/STORE 15' 2" X 4' 8" (4.62M X 1.42M)

Originally described as a Gun Room, this area allows excellent storage, with ceiling light fitting and central heating radiator. Window to side.

## KITCHEN 16' 0" X 13' 3" (4.88M X 4.04M)



Recently replaced by 'Drumoak' Kitchens, this beautiful room is fitted with a modern and quality range of wall and base units with inset downlighters, and granite work surfaces. There is also a central breakfast island seating four people, with integral wine fridge and storage below. The integrated 'Neff' appliances include double oven; halogen hob with extractor hood above; and dishwasher. There is an inset sink and drainer with built in waste disposal unit below the window to the side. Access to this room can be gained from either the Reception Hall or the Dining Room. Inset downlighters and central heating radiator. Door to Utility Room.

## UTILITY ROOM 10' 3" X 8' 4" (3.12M X 2.54M)



This room has a large store cupboard and houses the central heating boiler, with base units of the same style as the Kitchen. There is a free standing American style fridge/freezer. A part glazed door (with window to side) allows access to the secluded patio/drying area. Door to Cloakroom/Laundry.

### CLOAK/LAUNDRY ROOM 9' 9" X 7' 0" (2.97M X 2.13M)

Fitted with a toilet pedestal and Belfast sink, this generous space also houses additional dishwasher, washing machine and tumble drier. There are windows to both the side and front. Ceiling light fitting.

### LOUNGE 21' 6" X 15' 3" (6.55M X 4.65M)



This superb Lounge has access from the Hall and the Dining Room. The focal point of this room are the bank of oval windows which overlook the rear garden and allow superb south facing views. Double doors access the patio area. The room is bathed in natural light which highlights the wooden flooring, and coal fire in original brick surround. Inset downlighters with dimmer control and two central heating radiators. Sliding doors provide access to the Dining Room.

### DINING ROOM 17' 4" X 15' 9" (5.28M X 4.80M)



A lovely light and bright room with corner windows allowing lovely views, and part glazed door leading to the patio and gardens. Sliding doors provide easy access to the Lounge and there is also access direct from the Kitchen. There is ample space for large dining table and chairs. Ceiling chandelier and central heating radiator.



## BEDROOM 5/SITTING ROOM 17' 4" X 15' 9" (5.28M X 4.80M)



Currently set out as a relaxing Sitting Room, this was original a Bedroom and still has the original built-in wardrobes with fabulous wooden frontage and Art Deco style ironmongery, allowing excellent hanging and shelf storage. Windows to the side and front allow natural light. Coal fire in slate surround. Inset downlighters, central heating radiator and television point.

## STUDY 15' 9" X 13' 4" (4.80M X 4.06M)



This generous room could easily allow home working for two or three people, with window to front and coal fire in stone surround. Shelves and low level cupboards flank either side of the chimney breast. Ceiling light fitting and central heating radiator.

## UPPER FLOOR



Carpeted stairs lead to the upper floor accommodation - immediately apparent are the stunning stained glass windows to the front and side, again of the Art Deco style bathing the staircase and upper landing in natural light. There is a shelved linen cupboard and additional large store, with access hatch to the Loft space.

## FAMILY BATHROOM 14' 5" X 10' 5" (4.39M X 3.17M)



Newly fitted partially tiled bathroom fitted with a four piece suite comprising wash hand basin in vanity with mirror cabinet over for additional storage, toilet pedestal, walk in shower and bath. Beautiful stained glass window to the front allowing natural light. Inset downlighters, shaver point, heated chrome ladder style radiator and extractor fan.

## MASTER BEDROOM AND DRESSING ROOM 16' 0" X 15' 8" (4.88M X 4.78M)



The impressive Master Bedroom has a window to the rear which over looks the stunning garden and another to the side of the property. Of huge appeal will be the his and hers Dressing Room with plenty of shelf and hanging space, window to the side which brightens up the space including two ceiling lights. Space for free standing furniture. Central heating radiator and ceiling light.



## EN-SUITE BATHROOM 11' 8" X 9' 4" (3.56M X 2.84M)



Accessed from the Dressing Room, again newly fitted and partially tiled with a four piece suite comprising his and hers hand basin in vanity with wall mounted mirror and inset downlighters over, toilet pedestal, walk in shower with glazed screen and bath. Window to the front allowing natural light. Wall and base units with complimenting surfaces. Modern vertical radiator, chrome ladder style radiator, shaver point, inset downlighters and extractor fan.

## BEDROOM 2 19' 9" X 15' 3" (6.02M X 4.65M)



Spacious light and airy Bedroom bathed with light from the oval window which overlooks the garden and the stunning views beyond. Ample space for free standing furniture in addition to the built in vintage style wardrobes which provide generous hanging and shelf storage. Central heating radiator, telephone point and ceiling light fitting.

### BEDROOM 3 15' 8" X 16' 0" (4.78M X 4.88M)



Generous Double Bedroom which again benefits from built in wardrobes with great shelf and hanging storage. Space for free standing furniture. Windows to the side and rear which flood the room with light allowing you to take in the beautiful views including the garden. Central heating radiator and ceiling light fitting.

### BEDROOM 4 15' 8" X 14' 8" (4.78M X 4.47M)





---

You may download, store and use the material for your own personal use and research. You may not republish, retransmit, redistribute or otherwise make the material available to any party or make the same available on any website, online service or bulletin board of your own or of any other party or make the same available in hard copy or in any other media without the website owner's express prior written consent. The website owner's copyright must remain on all reproductions of material taken from this website.

28 Albyn Place  
Aberdeen  
AB10 1YL

Tel: 01224 626100  
Fax: 01224 845900

Email:  
[Info.property@stronachs.com](mailto:Info.property@stronachs.com)  
Web: [www.stronachs.com](http://www.stronachs.com)

**Stronachs**